

# RESIDENCE 12 G+16

WATER HAS A NEW FRONT



MOHAMMED BIN RASHID  
AL MAKTUUM CITY  
DISTRICT ONE



# G+16 Apartments - Residence 12

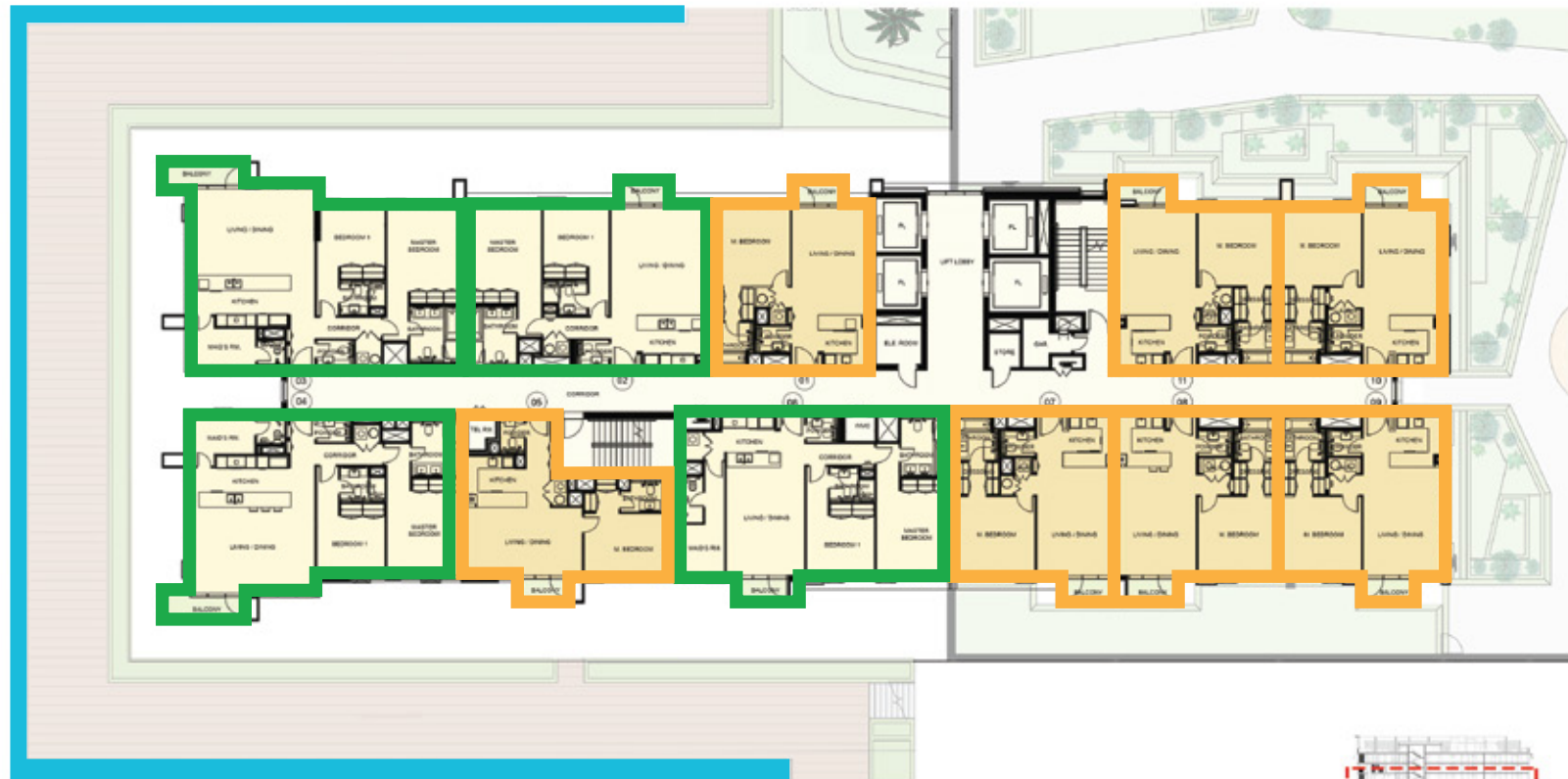
## Typical Sixth to Sixteenth Floor

### 1 and 2 Bedroom Apartments

MEYDAN ONE

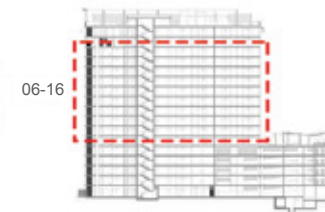
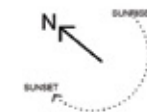
**MOHAMMED BIN RASHID**  
**AL MAKTOUM CITY**  
DISTRICT ONE

DUBAI SKYLINE



MEYDAN HOTEL

  2 BEDROOM   1 BEDROOM   CRYSTAL LAGOON





# G+16 Apartments - Residence 12

## Fifth Floor

### 1 and 2 Bedroom Apartments

MEYDAN ONE

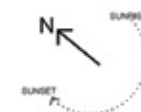
**MOHAMMED BIN RASHID**  
**AL MAKTOUM CITY**  
DISTRICT ONE

DUBAI SKYLINE

MEYDAN HOTEL



  2 BEDROOM     1 BEDROOM    CRYSTAL LAGOON



# G+16 Apartments - Residence 12

## Fourth Floor

1 and 2 Bedroom Apartments

  
**MOHAMMED BIN RASHID  
AL MAKTOUM CITY**  
DISTRICT ONE

MEYDAN ONE

DUBAI SKYLINE

MEYDAN HOTEL



# G+16 Apartments - Residence 12

## Typical First to Third Floor

### 1 and 2 Bedroom Apartments

  
**MOHAMMED BIN RASHID  
 AL MAKTOUM CITY**  
 DISTRICT ONE

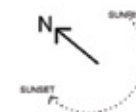
MEYDAN ONE

DUBAI SKYLINE

MEYDAN HOTEL



 2 BEDROOM  1 BEDROOM  CRYSTAL LAGOON



## 2 BEDROOMS

1ST TO 16TH FLOOR

Suite Area: 1053 - 1244 sq. ft

Balcony Area: 30 - 52 sq. ft

Total Area: 1083 - 1296 sq. ft



MOHAMMED BIN RASHID  
AL MAKTOUM CITY

DISTRICT ONE



## 2 BEDROOMS

1ST TO 16TH FLOOR

Suite Area: 1053 - 1244 sq. ft

Balcony Area: 30 - 52 sq. ft

Total Area: 1083 - 1296 sq. ft



MOHAMMED BIN RASHID  
AL MAKTOUM CITY

DISTRICT ONE



## 2 BEDROOMS

1ST TO 16TH FLOOR

Suite Area: 1053 - 1244 sq. ft

Balcony Area: 30 - 52 sq. ft

Total Area: 1083 - 1296 sq. ft



MOHAMMED BIN RASHID  
AL MAKTOUM CITY

DISTRICT ONE





## 1 BEDROOM

1ST TO 16TH FLOOR

Suite Area: 684 - 716 sq. ft

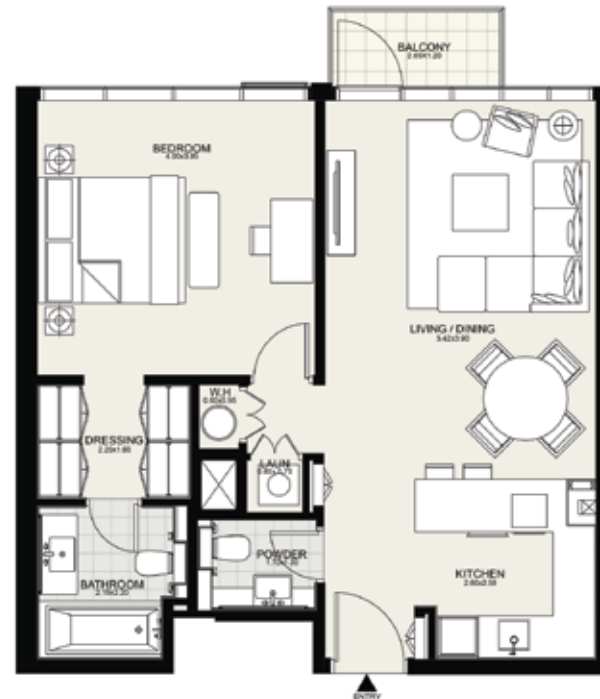
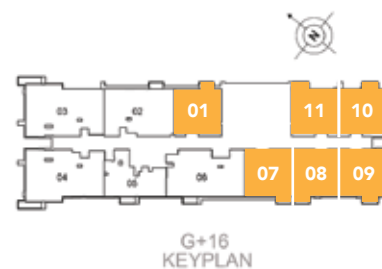
Balcony Area: 30 - 55 sq. ft

Total Area: 716 - 768 sq. ft



MOHAMMED BIN RASHID  
AL MAKTOUM CITY

DISTRICT ONE



## 1 BEDROOM

1ST TO 16TH FLOOR

Suite Area: 684 - 716 sq. ft

Balcony Area: 30 - 55 sq. ft

Total Area: 716 - 768 sq. ft



MOHAMMED BIN RASHID  
AL MAKTOUM CITY

DISTRICT ONE



G+16  
KEYPLAN

# G+16 Apartments - Residence 12

## Ground Floor

1 and 2 Bedroom Apartments

**D1**  
**MOHAMMED BIN RASHID**  
**AL MAKTOUM CITY**  
 DISTRICT ONE

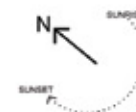
MEYDAN ONE

DUBAI SKYLINE

MEYDAN HOTEL



  2 BEDROOM   1 BEDROOM   CRYSTAL LAGOON



## 2 BEDROOMS

### GROUND FLOOR

Suite Area: 1053 - 1244 sq. ft

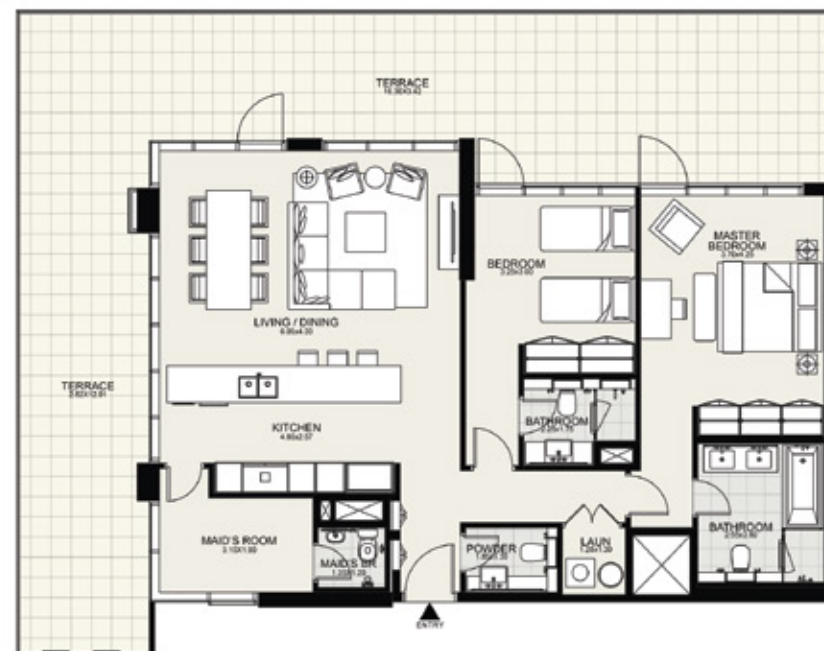
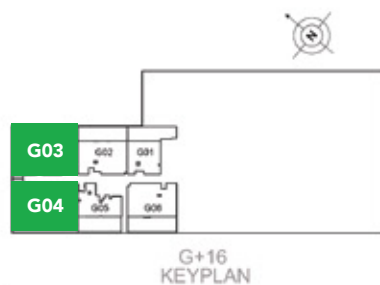
Balcony Area: 468 - 897 sq. ft

Total Area: 1521 - 2132 sq. ft



**MOHAMMED BIN RASHID  
AL MAKTOUM CITY**

DISTRICT ONE





## 2 BEDROOMS

### GROUND FLOOR

Suite Area: 1053 - 1244 sq. ft

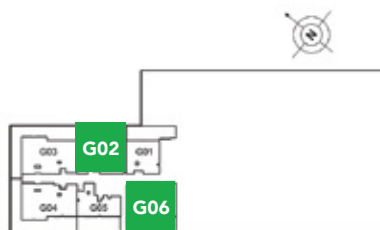
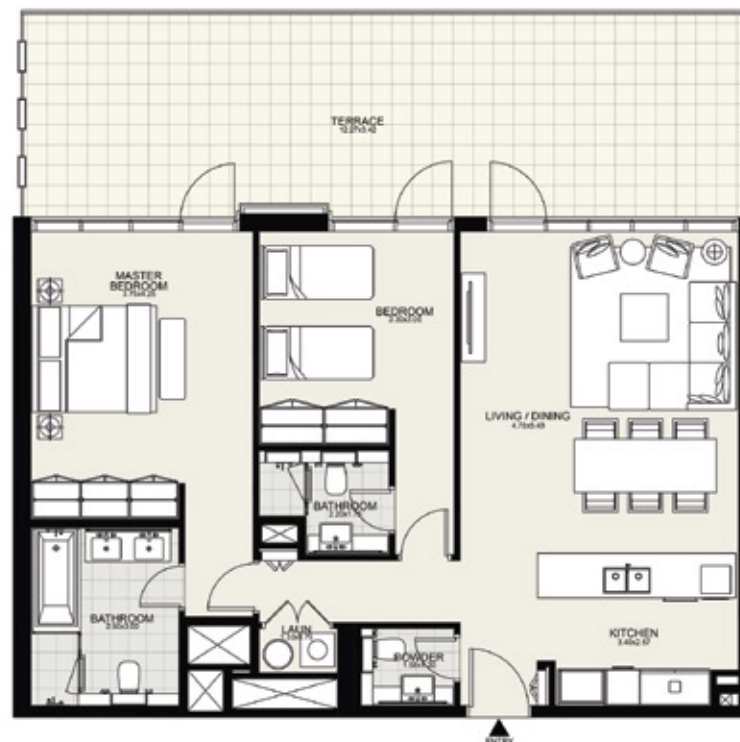
Balcony Area: 468 - 897 sq. ft

Total Area: 1521 - 2132 sq. ft



**MOHAMMED BIN RASHID  
AL MAKTOUM CITY**

DISTRICT ONE



G+16  
KEYPLAN

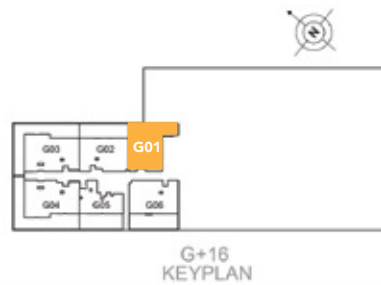
## 1 BEDROOM

### GROUND FLOOR

Suite Area: 686 - 714 sq. ft

Balcony Area: 446 - 451 sq. ft

Total Area: 1137 - 1159 sq. ft



MOHAMMED BIN RASHID  
AL MAKTOUM CITY

DISTRICT ONE

## 1 BEDROOM

### GROUND FLOOR

Suite Area: 686 - 714 sq. ft

Balcony Area: 446 - 451 sq. ft

Total Area: 1137 - 1159 sq. ft



MOHAMMED BIN RASHID  
AL MAKTUUM CITY

DISTRICT ONE



G+16  
KEYPLAN

# PAYMENT PLAN

---

BOOKING AMOUNT\*

10%

Upon  
Booking\*

1ST INSTALMENT\*

5%

20%  
Construction

2ND INSTALMENT\*

5%

30%  
Construction

3RD INSTALMENT\*

10%

40%  
Construction

4TH INSTALMENT\*

10%

50%  
Construction

5TH INSTALMENT\*

10%

60%  
Construction

FINAL INSTALMENT\*

50%

On  
Completion

\*Terms & Conditions Apply.