

# RESIDENCE 12

## G+16

WATER HAS A NEW FRONT



MOHAMMED BIN RASHID  
AL MAKTOUM CITY  
DISTRICT ONE





---

District One Residences is a gated community, adorned with a glistening Crystal Lagoon and plush greenery. Right from spacious dwellings marked by aesthetic minimalism and smart functionality, our water-front apartments are bathed in natural light and imbue the charm of high-end, tranquil living.

---



# THE ICONIC CRYSTAL LAGOON





# THE ICONIC CRYSTAL LAGOON





# THE ICONIC CRYSTAL LAGOON



# ICONIC LOCATION



10 MINS  
BUSINESS BAY



5 MINS  
THE MEYDAN HOTEL



12 MINS  
DIFC



15 MINS  
BURJ AL ARAB



12 MINS  
WORLD TRADE CENTRE



20 MINS  
INTERNATIONAL AIRPORT





7 KM  
Crystal Lagoon



# 8.4 KM

## Cycling & Running Track





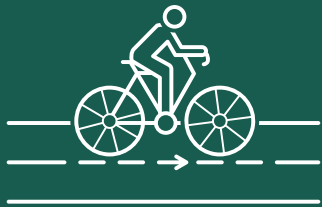


60%  
Green Cover





# AMENITIES



Bicycle Track



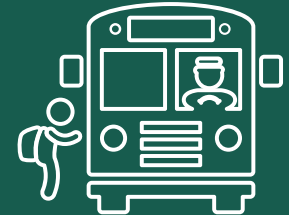
Jogging Track



Supermarket



Pharmacy



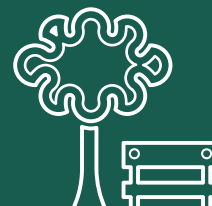
School



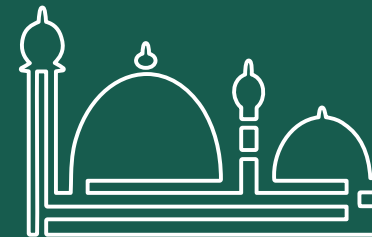
Crystal Lagoon  
& Beachfront



Kids Play  
Area



Parks



Mosque



# DISTRICT ONE MASTERPLAN





# TOWER LOCATION MAP



**RESIDENCE 12**  
*WATER HAS A NEW FRONT.*

Disclaimer: The design layouts, dimensions, guidelines, visualizations, renderings, images and any other information as contained herein is provided for illustrative purposes only and subject to change at any time at the sole discretion of the Developer.



# TOWER EXTERIOR



Disclaimer: The design layouts, dimensions, guidelines, visualizations, renderings, images and any other information as contained herein is provided for illustrative purposes only and subject to change at any time at the sole discretion of the Developer.



# APARTMENT TOWER INTERIORS





# APARTMENT TOWER INTERIORS





# APARTMENT TOWER INTERIORS





# G+16 Apartments - Residence 12

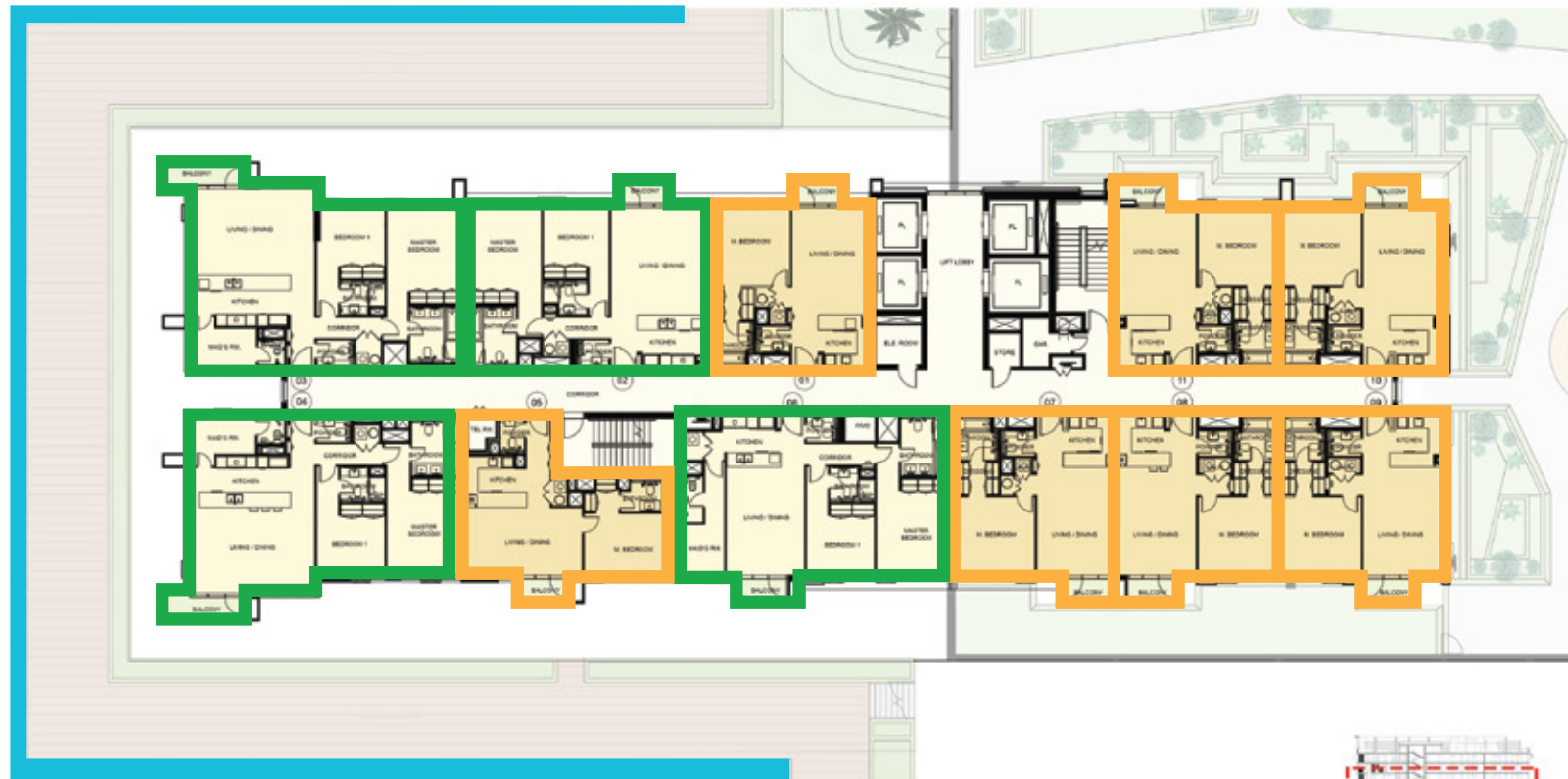
## Typical Sixth to Sixteenth Floor

### 1 and 2 Bedroom Apartments

MEYDAN ONE

**MOHAMMED BIN RASHID**  
**AL MAKTUUM CITY**  
DISTRICT ONE

DUBAI SKYLINE

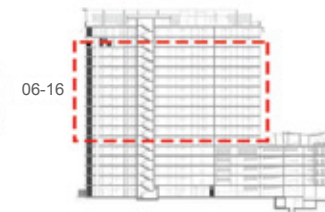


MEYDAN HOTEL

2 BEDROOM

1 BEDROOM

CRYSTAL LAGOON





# G+16 Apartments - Residence 12

## Fifth Floor

1 and 2 Bedroom Apartments

MEYDAN ONE

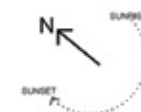
  
**MOHAMMED BIN RASHID  
AL MAKTUUM CITY**  
DISTRICT ONE

DUBAI SKYLINE



MEYDAN HOTEL

 2 BEDROOM  1 BEDROOM  CRYSTAL LAGOON





# G+16 Apartments - Residence 12

## Fourth Floor

1 and 2 Bedroom Apartments

  
**MOHAMMED BIN RASHID  
AL MAKTOUM CITY**  
DISTRICT ONE

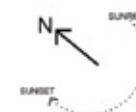
MEYDAN ONE

DUBAI SKYLINE

MEYDAN HOTEL



 2 BEDROOM  1 BEDROOM  CRYSTAL LAGOON





# G+16 Apartments - Residence 12

## Typical First to Third Floor

1 and 2 Bedroom Apartments

**MOHAMMED BIN RASHID**  
**AL MAKTOUM CITY**  
 DISTRICT ONE

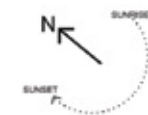
MEYDAN ONE

DUBAI SKYLINE

MEYDAN HOTEL



  2 BEDROOM   1 BEDROOM  CRYSTAL LAGOON





## 2 BEDROOMS

1ST TO 16TH FLOOR

Suite Area: 1053 - 1244 sq. ft

Balcony Area: 30 - 52 sq. ft

Total Area: 1083 - 1296 sq. ft



MOHAMMED BIN RASHID  
AL MAKTOUM CITY

DISTRICT ONE





## 2 BEDROOMS

1ST TO 16TH FLOOR

Suite Area: 1053 - 1244 sq. ft

Balcony Area: 30 - 52 sq. ft

Total Area: 1083 - 1296 sq. ft



MOHAMMED BIN RASHID  
AL MAKTOUM CITY

DISTRICT ONE





## 2 BEDROOMS

1ST TO 16TH FLOOR

Suite Area: 1053 - 1244 sq. ft

Balcony Area: 30 - 52 sq. ft

Total Area: 1083 - 1296 sq. ft



MOHAMMED BIN RASHID  
AL MAKTOUM CITY

DISTRICT ONE





## 1 BEDROOM

1ST TO 16TH FLOOR

Suite Area: 684 - 716 sq. ft

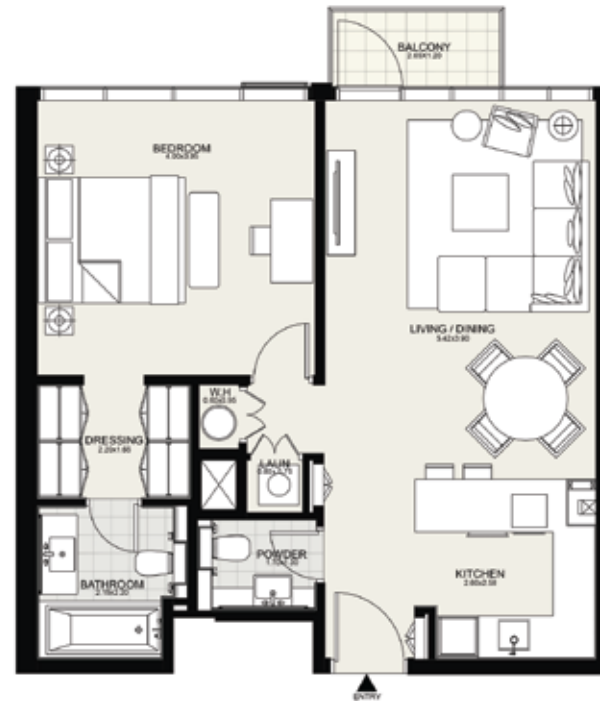
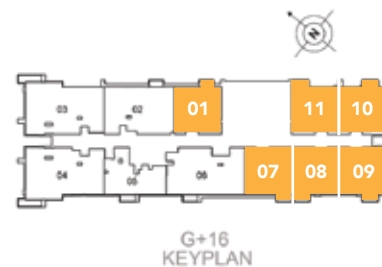
Balcony Area: 30 - 55 sq. ft

Total Area: 716 - 768 sq. ft



MOHAMMED BIN RASHID  
AL MAKTOUM CITY

DISTRICT ONE



## 1 BEDROOM

1ST TO 16TH FLOOR

Suite Area: 684 - 716 sq. ft

Balcony Area: 30 - 55 sq. ft

Total Area: 716 - 768 sq. ft



MOHAMMED BIN RASHID  
AL MAKTOUM CITY

DISTRICT ONE



G+16  
KEYPLAN



# G+16 Apartments - Residence 12

## Ground Floor

1 and 2 Bedroom Apartments

**D1**  
MOHAMMED BIN RASHID  
AL MAKTOUM CITY  
DISTRICT ONE

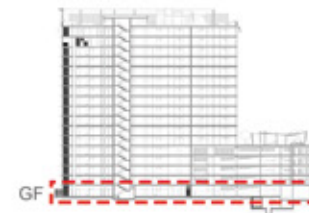
MEYDAN ONE

DUBAI SKYLINE

MEYDAN HOTEL



  2 BEDROOM   1 BEDROOM   CRYSTAL LAGOON



## 2 BEDROOMS

### GROUND FLOOR

Suite Area: 1053 - 1244 sq. ft

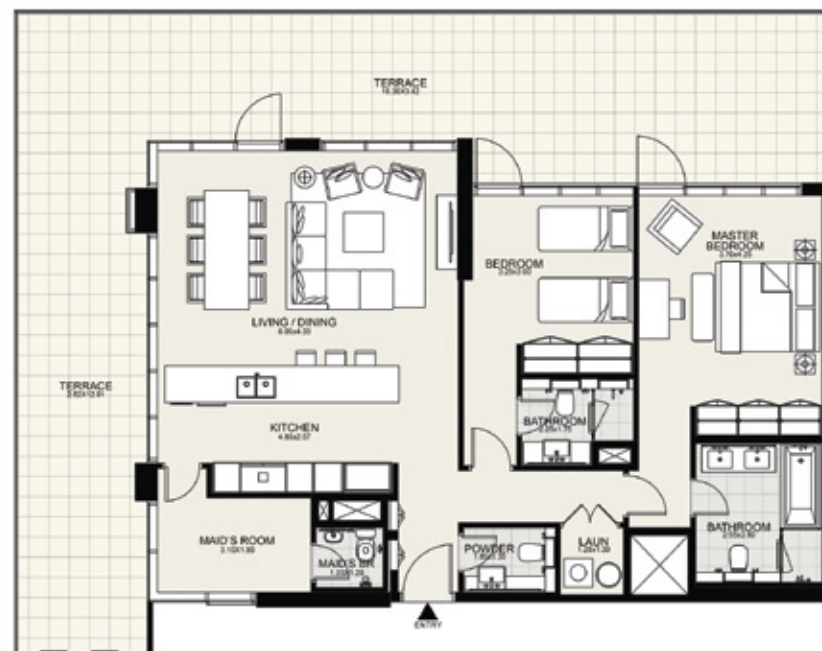
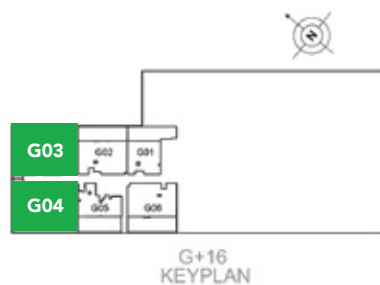
Balcony Area: 468 - 897 sq. ft

Total Area: 1521 - 2132 sq. ft



**MOHAMMED BIN RASHID  
AL MAKTOUM CITY**

DISTRICT ONE





## 2 BEDROOMS

### GROUND FLOOR

Suite Area: 1053 - 1244 sq. ft

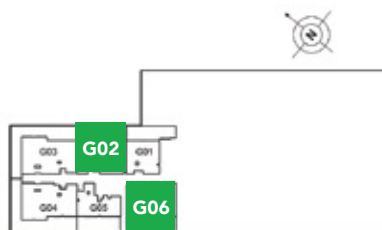
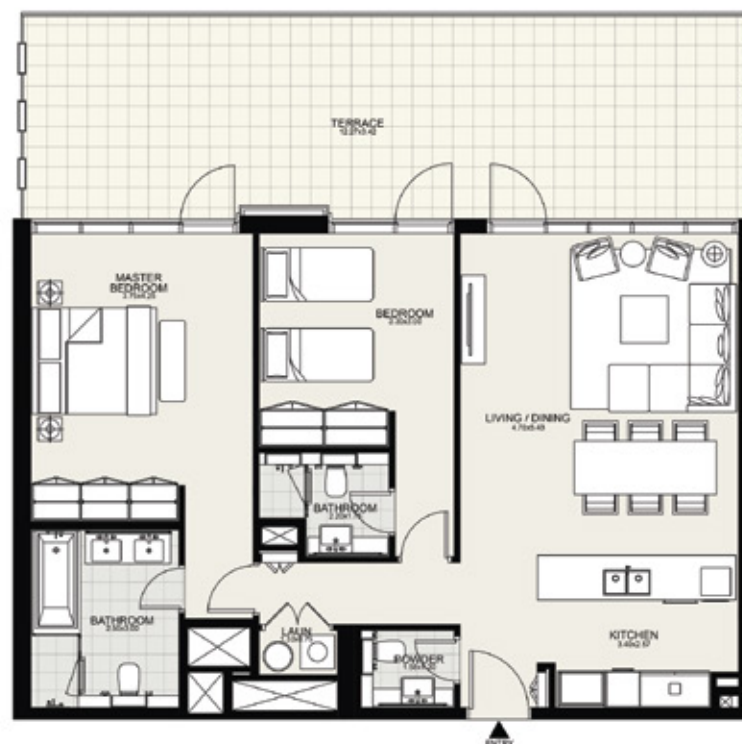
Balcony Area: 468 - 897 sq. ft

Total Area: 1521 - 2132 sq. ft



**MOHAMMED BIN RASHID  
AL MAKTOUM CITY**

DISTRICT ONE



G+16  
KEYPLAN

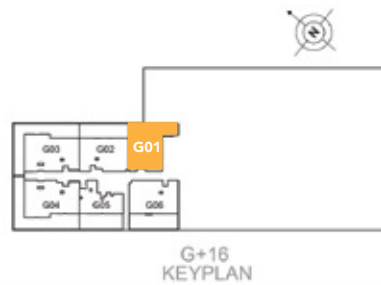
## 1 BEDROOM

### GROUND FLOOR

Suite Area: 686 - 714 sq. ft

Balcony Area: 446 - 451 sq. ft

Total Area: 1137 - 1159 sq. ft



MOHAMMED BIN RASHID  
AL MAKTOUM CITY

DISTRICT ONE



## 1 BEDROOM

### GROUND FLOOR

Suite Area: 686 - 714 sq. ft

Balcony Area: 446 - 451 sq. ft

Total Area: 1137 - 1159 sq. ft



**MOHAMMED BIN RASHID  
AL MAKTOUM CITY**

DISTRICT ONE



G+16  
KEYPLAN

# PAYMENT PLAN

---

BOOKING AMOUNT\*

10%

Upon  
Booking\*

1ST INSTALMENT\*

5%

20%  
Construction

2ND INSTALMENT\*

5%

30%  
Construction

3RD INSTALMENT\*

10%

40%  
Construction

4TH INSTALMENT\*

10%

50%  
Construction

5TH INSTALMENT\*

10%

60%  
Construction

FINAL INSTALMENT\*

50%

On  
Completion

\*Terms & Conditions Apply.



For More Information Call us +971 4 248 3400 or Visit Us +971 4 248 3400  
<https://www.tanamiproperties.com/>