

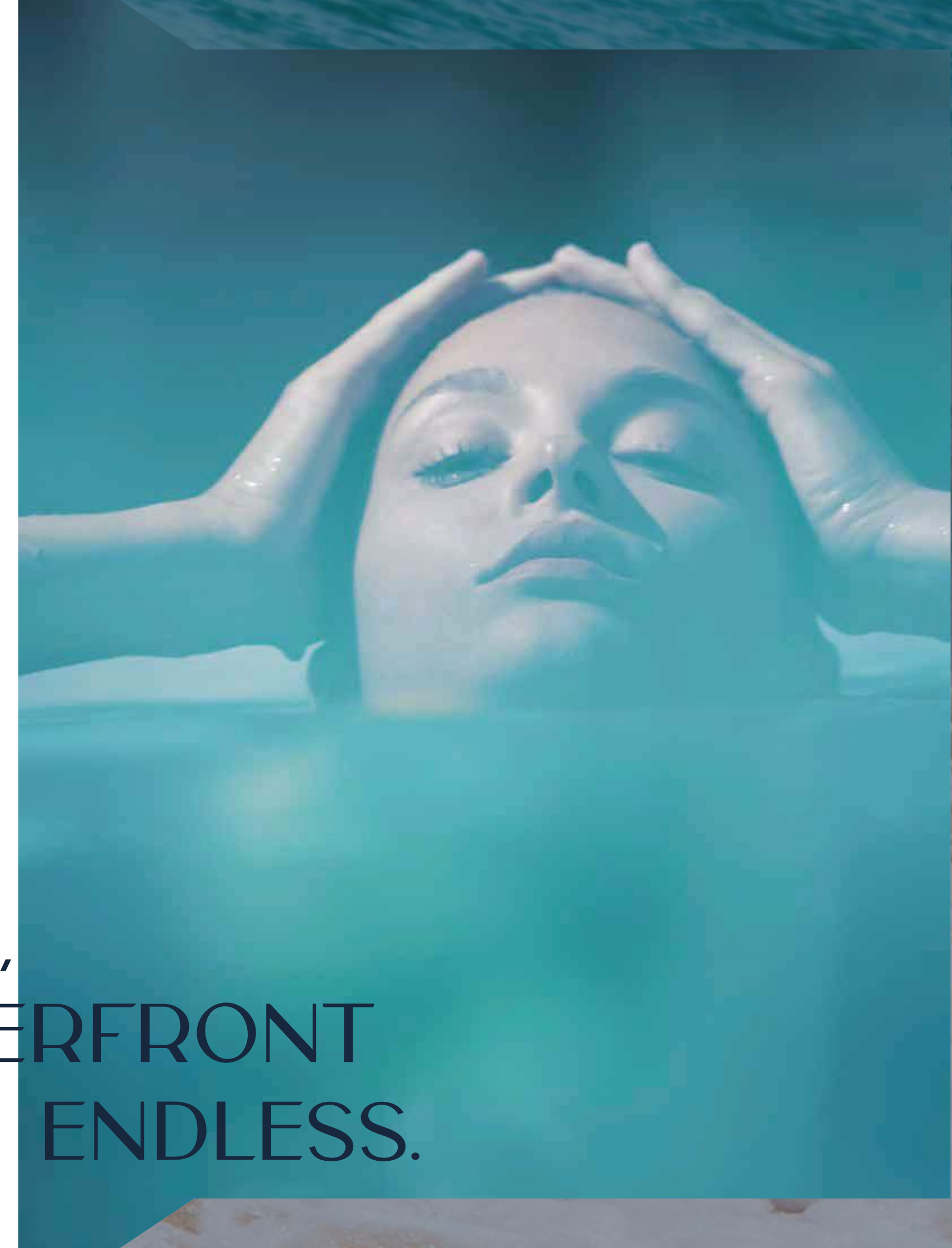
BONDS AVENUE

R E S I D E N C E S



NOT JUST A PLACE.
A VIBRANT DESTINATION
TO EMBRACE AND EXPLORE.

SUNSETS FADE,
BUT THE WATERFRONT
EXPERIENCE IS ENDLESS.



LIVING BY THE WATER IS A BREATHTAKING VOYAGE.
IT OVERFLOWS WITH BEAUTY, TRANQUILITY, AND ENDLESS HORIZONS.
A RARE GIFT THAT DESERVES TO BE EMBRACED WITH EVERY WAVE.

An aerial rendering of a large, crescent-shaped artificial island in Dubai. The island is densely packed with modern, multi-story residential buildings, interspersed with lush greenery and winding roads. A large, calm body of water is in the center of the island, surrounded by more buildings and trees. The island is bordered by the sea on three sides, with a small peninsula at the bottom. The overall scene is a vibrant, futuristic depiction of urban development in a coastal environment.

A SPARKLING OCEANSIDE SANCTUARY.

Welcome to Dubai Island

BONDS AVENUE OFFERS A DISTINCTIVE SANCTUARY ON THE VIBRANT DUBAI ISLAND.

Dubai Island is one of the most ambitious and iconic manmade islands in Dubai. Once fully realized, it will become a premier destination, featuring world-class wellness resorts, eco-conscious luxury hotels, and the renowned shopping hub, Souk Al Marfa.

The island's development plans include extending pristine beaches and creating expansive public park spaces for residents and visitors alike.

A MASTERPIECE IN EVERY DETAIL.

Where spectacular views blend with exquisite design.

Bonds Avenue redefines architectural norms, embracing organic, flowing forms that break free from convention. With its seamless contours and cornerless design, it offers an extraordinary living experience that prioritizes exclusivity and sophistication.

This visionary project was born from the desire to create something truly one-of-a-kind — a masterpiece that stands unparalleled, catering to every need with unmatched elegance.



An architectural rendering of a modern high-rise building named 'AMIRAH' at night. The building features a curved facade with large glass windows and balconies, many of which are illuminated from within. A rooftop pool is visible on one of the upper floors. The building is surrounded by lush greenery, including palm trees and other tropical plants. In the background, there is a body of water with a few boats and other buildings in the distance. The overall atmosphere is one of luxury and modern living.

EMBRACE THE ART OF EXCEPTIONAL LIVING.

An iconic silhouette, unparalleled and timeless.



GRAND ARRIVAL LOBBY.

Where grandeur and relaxation coexist.



Behold the breathtaking beauty, where nature grants serenity and peace. At the heart of it all: an enclosed grove, alive and visible from the upper decks. You've truly arrived, entering a world apart, a sanctuary all your own.

A LIFE CRAFTED EXCLUSIVELY FOR YOU.

Craft Your Own Journey.

Bonds Avenue design is at the forefront of modern sophistication, offering a living experience that blends style with functionality. With 1, 2, and 3 bedroom apartments, along with exclusive penthouse duplexes and triplexes, each residence provides expansive space and unparalleled flexibility.



These residences are made for those who appreciate the beauty of simplicity. Thoughtfully designed 1, 2, 3 and 4 bedroom layouts offer both elegance and practicality, tailored to enhance everyday living.

These residences seamlessly blend comfort and elegance. With spacious areas for both entertaining and unwinding, they create the perfect setting for those who seek refined, elevated living.





THE ESSENCE OF
REMARKABLE LIVING.

unrivalled and unforgettable.

AN EXCLUSIVE BATHROOM EXPERIENCE, TAILORED FOR THE FINEST.

Luxury isn't just an experience; it's a lifestyle. Our crafted-to-order bathrooms redefine opulence, offering an oasis of relaxation and sophistication right at home. Indulge in unmatched craftsmanship and timeless design.





A PERFECT BALANCE OF PRIVATE INDULGENCE AND THE ICONIC SKYLINE.

views of the iconic Burj Khalifa and the dynamic Dubai skyline.



FOR THOSE WHO SEEK THE EXTRAORDINARY.

The Apex of Refined Living.



Penthouse duplex residences redefine exceptional living. These exclusive homes offer dual levels of luxury, with Elegance living spaces and stunning views of the Arabian Gulf Territory.

Featuring private terraces, gourmet kitchens, and lavish master suites, they are designed for those who seek nothing less than the extraordinary.

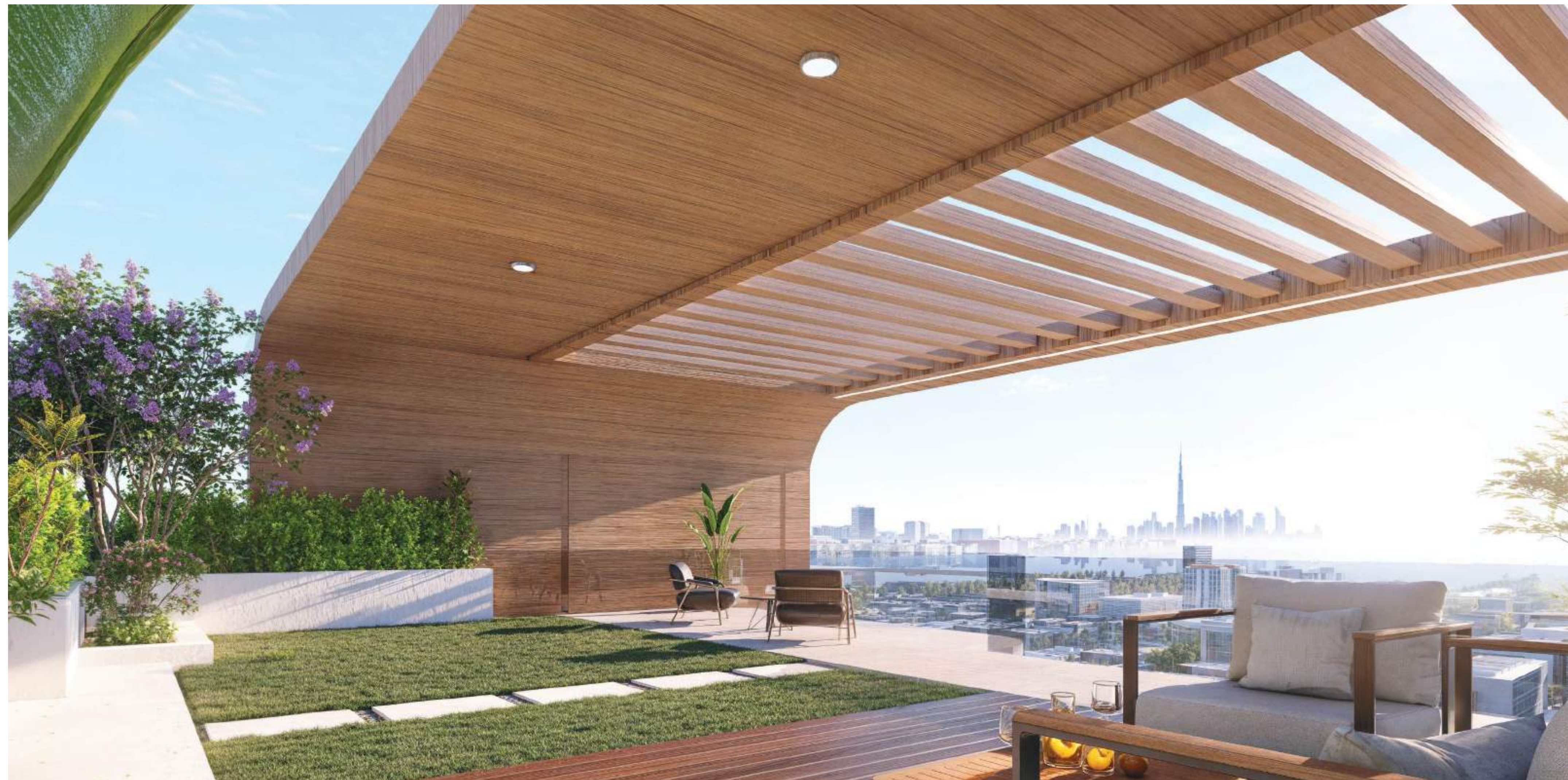


ELEVATE YOUR LIFESTYLE WITH
YOUR OWN PRIVATE ELEVATOR.

Step into Exclusivity and convenience

A GLEAMING SKYLINE SANCTUARY.

With a Private, Lush Green Garden.







AN UNMATCHED SENSE OF TRANQUILITY.

golden embrace of sunshine meets breathtaking skyline views.

LUXURY REDEFINED IN EXQUISITE TRIPLEX TOWNHOUSE.

Indulge in the pinnacle of luxury with this stunning Triplex Townhouse, offering unparalleled amenities, including all en-suite bedrooms, a chic powder room, a maid's room, a convenient store, and a dedicated laundry area—perfectly designed for sophisticated, seamless living.





SOPHISTICATED FINISHES REDEFINE CONTEMPORARY LIVING.

crafted, edge-cutting washroom

Bonds Avenue's luxury washrooms offer a marble bathtub, vast space, and refined finishes, creating a serene spa-like retreat. With every detail meticulously crafted, these expansive bathrooms provide the perfect blend of modern elegance and indulgent comfort.



The living room, adorned with luxury furnishings, sets the stage for elegant gatherings, while the sophisticated dining area features exquisite tables that elevate every meal.

The kitchen, with its refined finishes and cutting-edge design, creates a seamless flow of style and functionality, making it the heart of this exceptional home.



ELEVATED LIVING WITH WORLD-CLASS AMENITIES.

Experience luxury like never before, where sophistication meets comfort in every detail.



Exclusive Amenities:

Infinity pool, private pool, gym, yoga area, jacuzzi, sauna, mini golf, steam shower, padel court, b.b.q area, children's play area, kids pool, and landscaped gardens.

Community Features:

Jogging tracks, landscaped gardens, outdoor lounges, and family-friendly spaces.

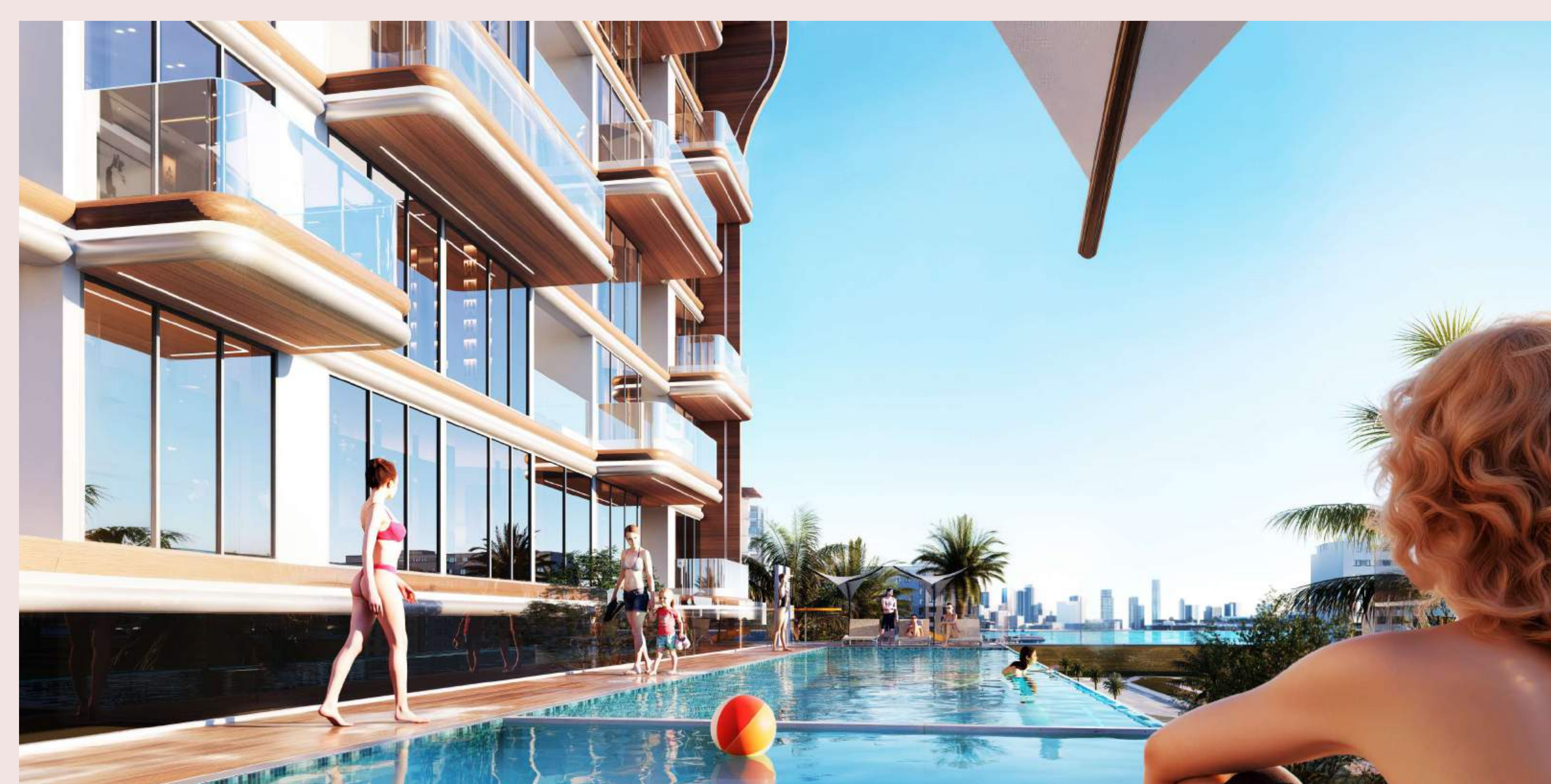
7/24 Services:

Concierge, valet, and dedicated security for residents.

ELEVATED LIVING, ENDLESS HORIZONS.

A perfect blend of elegance, innovation, and
luxurious waterfront living.





UNRIVALED AMENITIES, UNMATCHED LIFESTYLE.

A haven of relaxation and recreation,
and resort-style living.

SEASIDE SERENITY, URBAN SOPHISTICATION.

Experience modern sophistication sea views
and world-class amenities.





UNPARALLELED VIEWS, UNMATCHED LIFESTYLE.

A perfect blend of elegance, innovation, and
luxurious waterfront living.

