



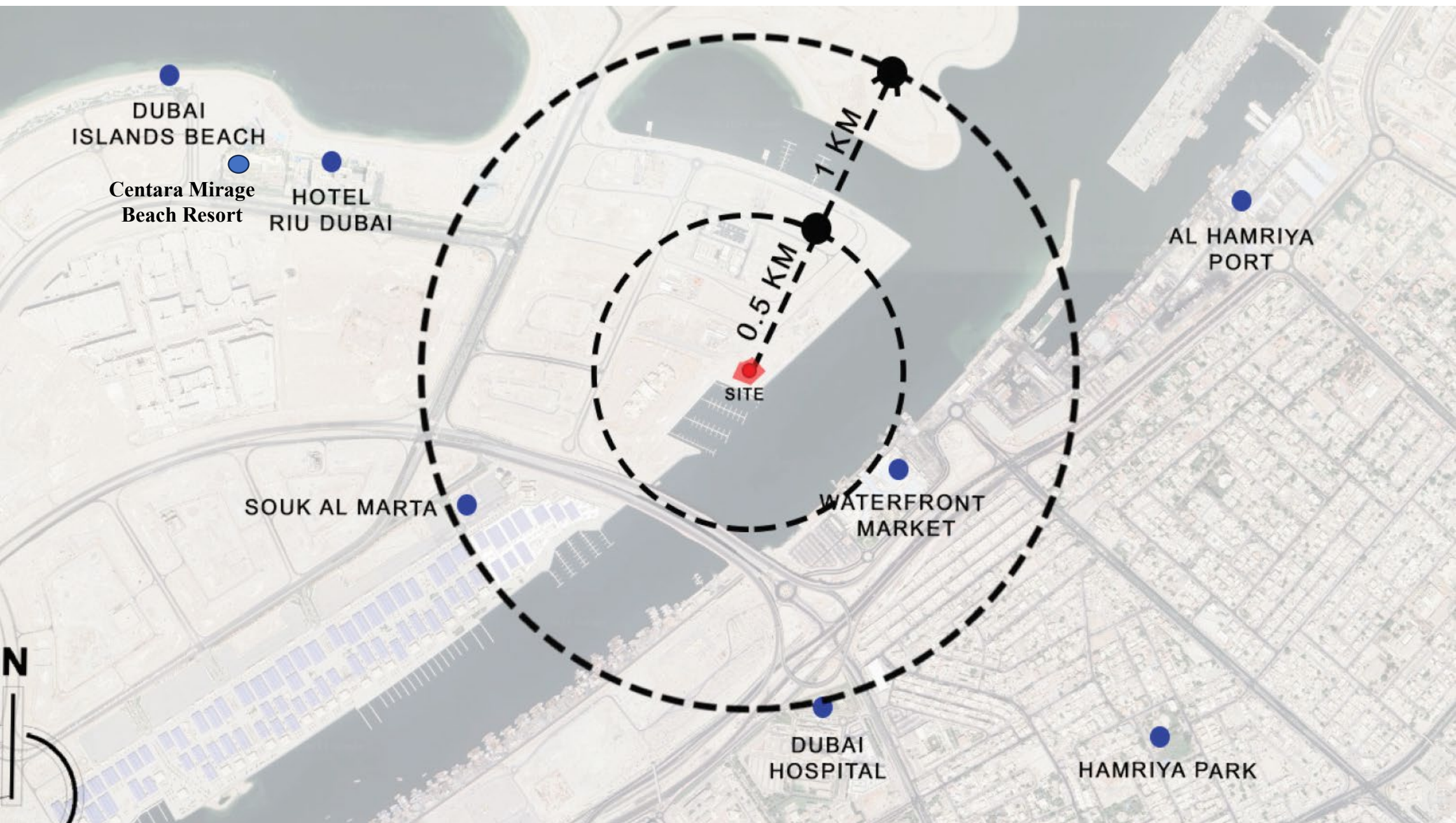
Azizi Wasel – Dubai Island

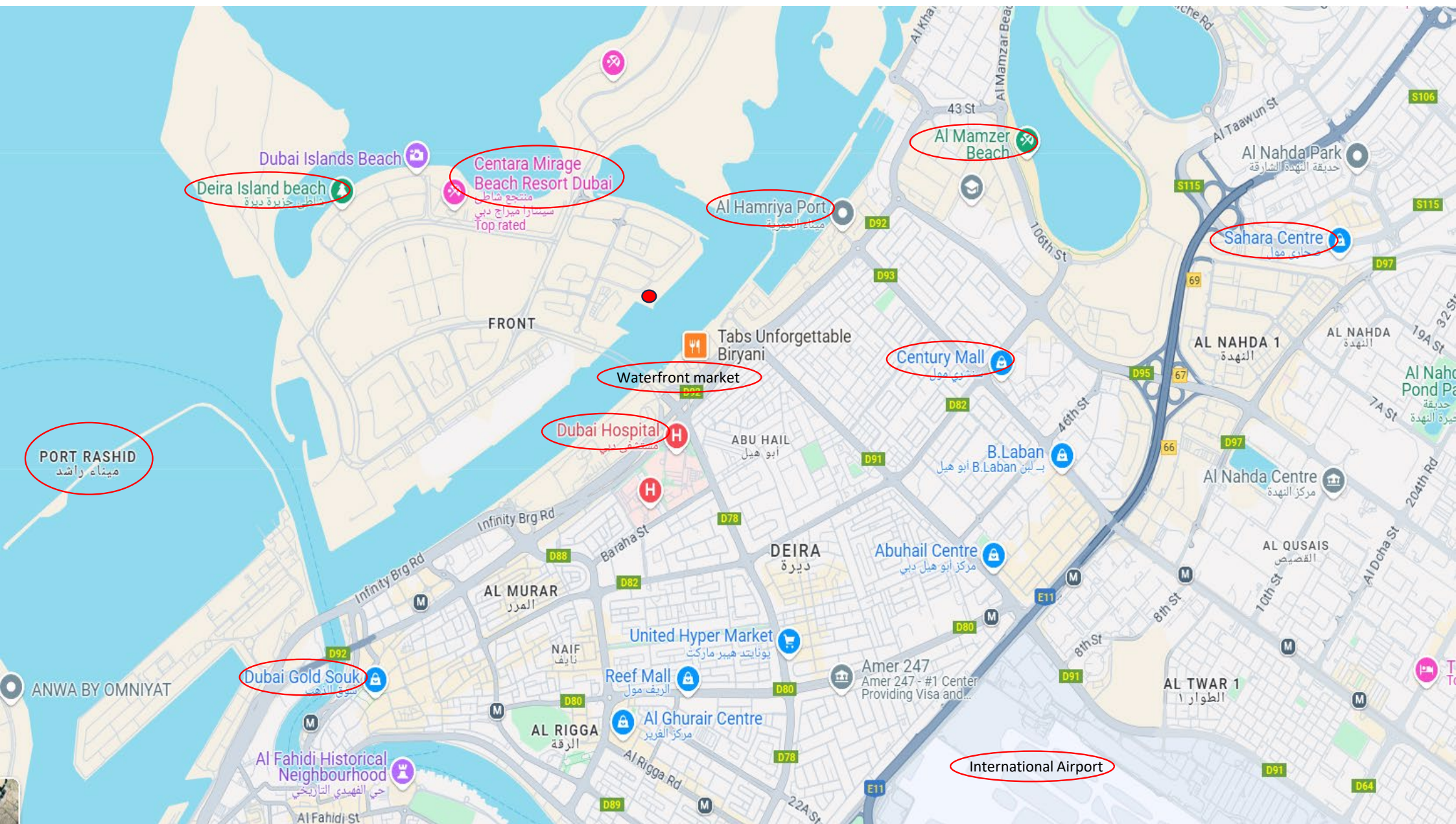
OFFPLAN

Only for Internal Use, Reference & Training Purposes.
Not to be sent outside the organization

By Training & Development Department (L&D)









Project Layout



Total Apartments: 221

Key Features

- Structure: 3 level Basement + Ground + 13 floors + Roof
- Configurations: Studios, one, two, three bedroom apartments & Penthouses
- Studio – 52 units
 - 1 Bed – 80 units
 - 2 Bed – 51 units
 - 3 Bed – 28 units
- Penthouse (3 & 4 bed) – 10 units - WIP
- Penthouses on 12th to 13th floor
- Parking count = 1 (For studio, 1bed & 2bed);
Parking count = 2 (For 3bed & Penthouse)
- Completion By: Jun 2027
- Payment Plan: 50/50

Note: Vat(5%) is payable by customer





Amenities:

On Ground Floor:

Lounge Bar / Cafe

3 Penthouse Lift

Retail (2)

Restaurant (2)

3 Passenger + 1 Service Lift for Apartments

On First Floor:

Kids Play Area

Cinema Room

Game Room

Gym

Spa, Steam and Sauna

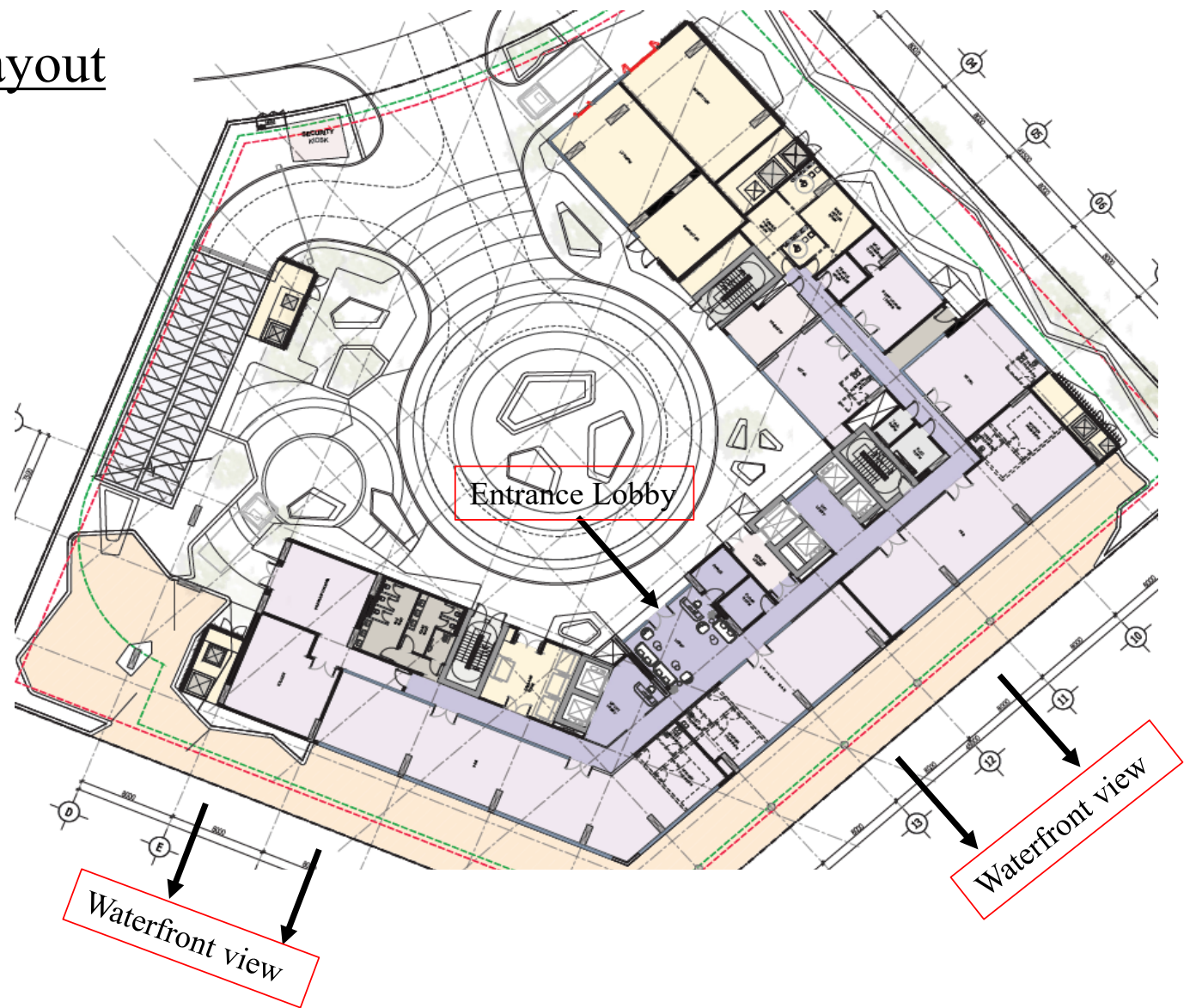
& 8 apartments (studio, 1bed & 2bed)

On Second Floor:

Swimming Pool

& 14 apartments

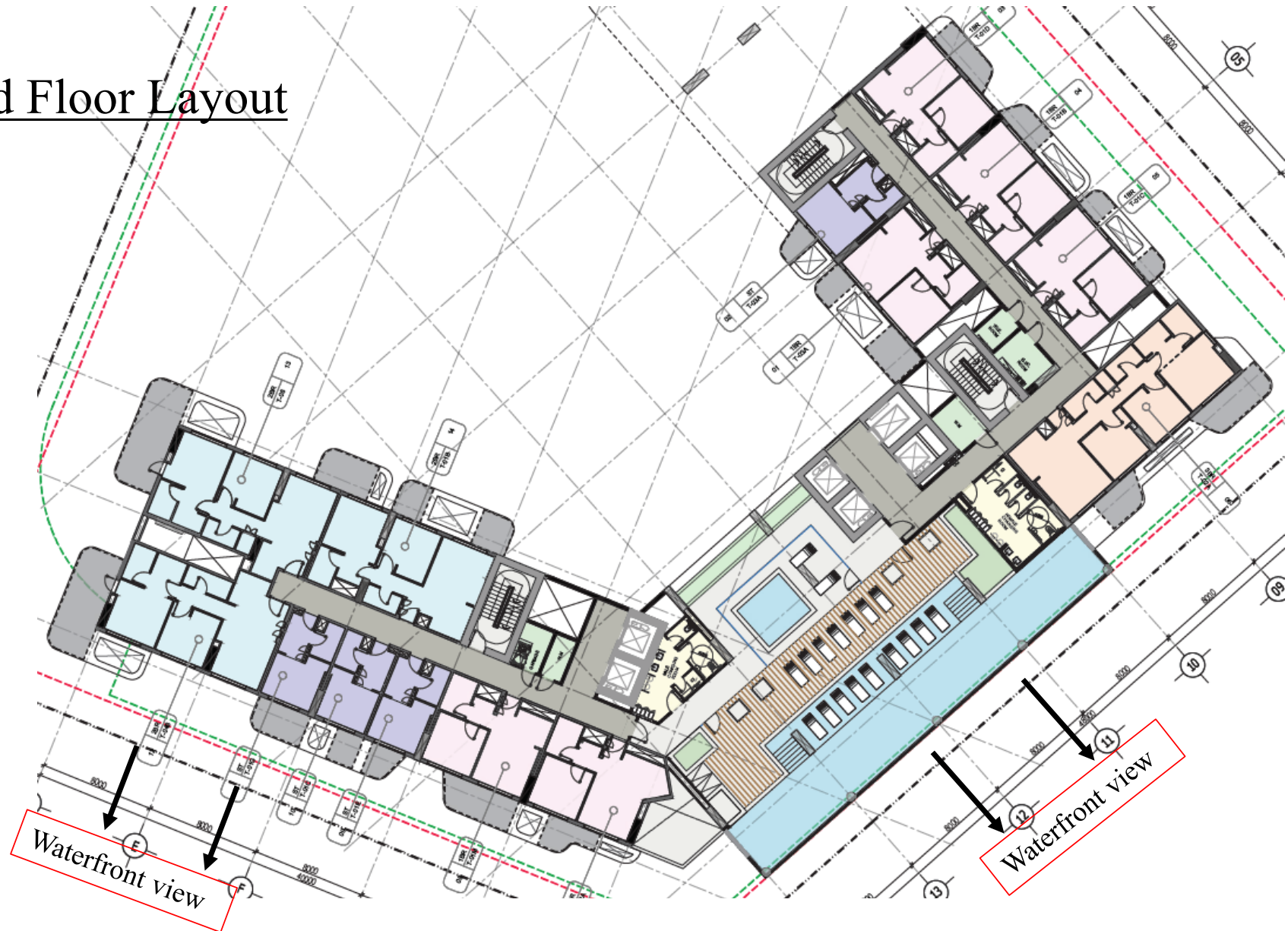
Ground Floor Layout



First Floor Layout



Second Floor Layout



Floor layout
21 apartments per floor



12th Floor Layout

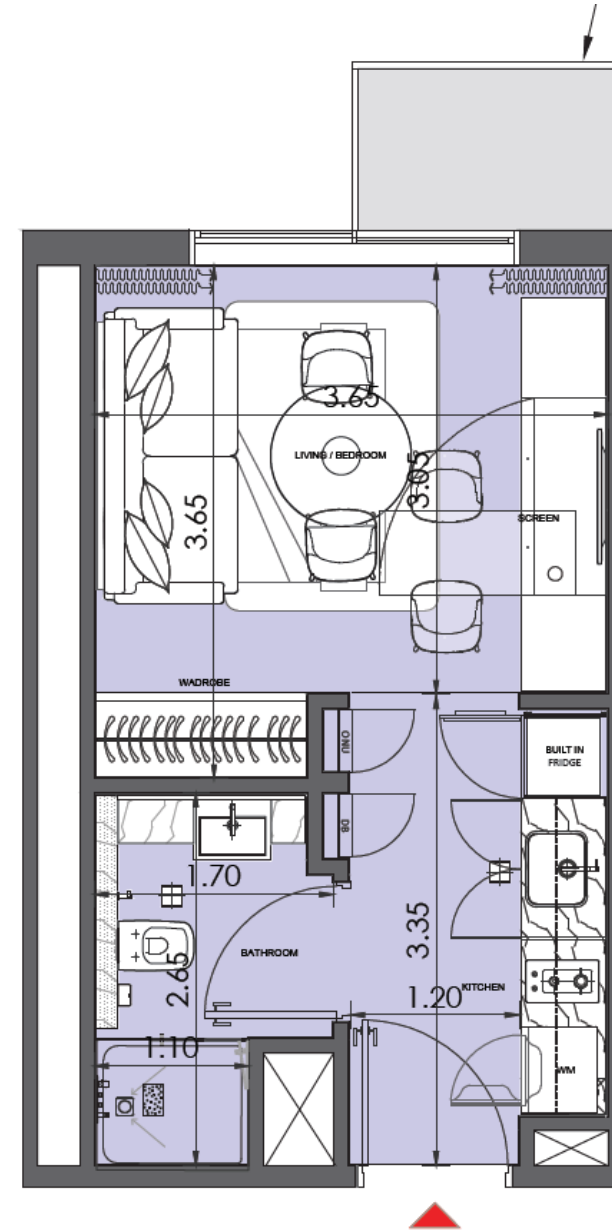
- All Duplex (yet to be confirmed)
- 10 penthouse per floor
- Each penthouse has private pool

Note: Changes in design are expected.



Studio Layout

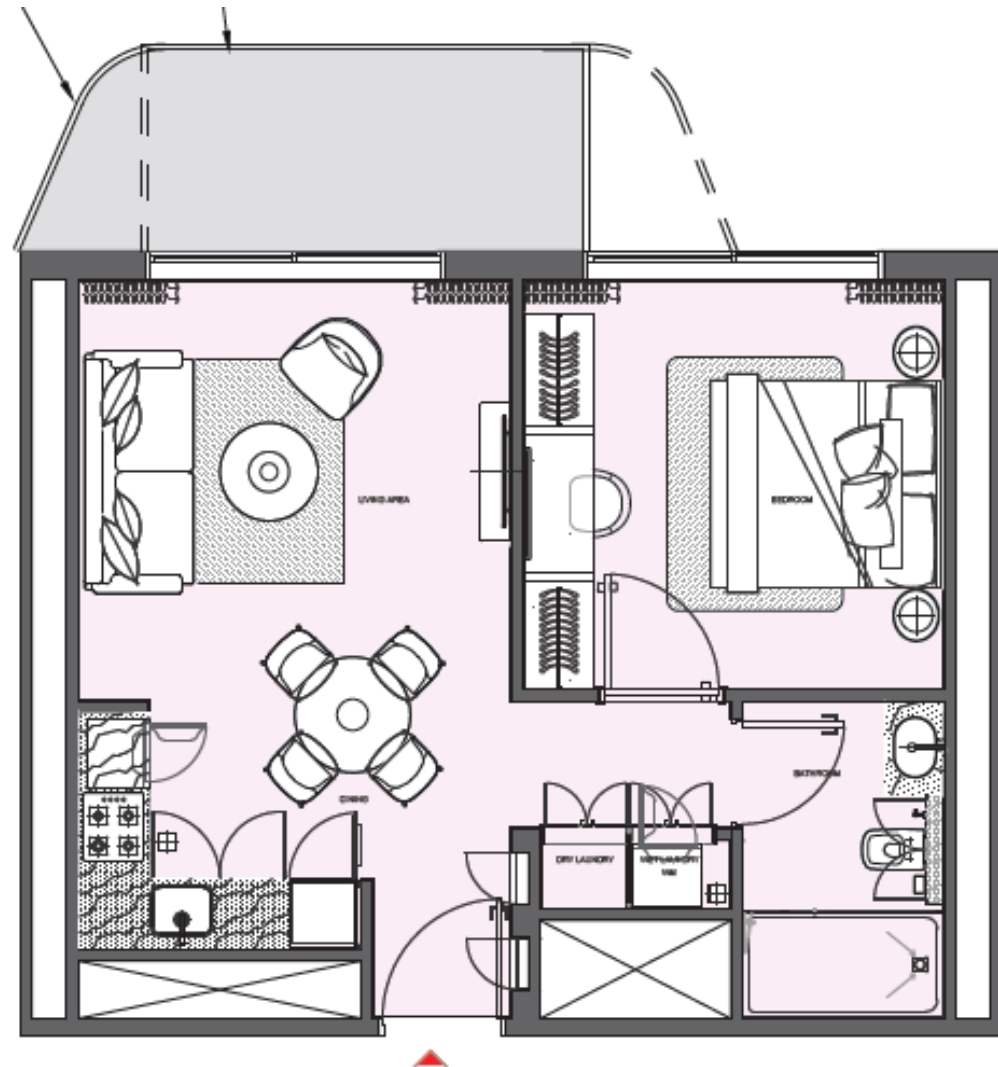
- Size: 317 sq.ft to 370 sq.ft
- Total 11 types of layouts
- Price: AED 991,000 onwards



Source: Salesforce dated 21st Jan 2025

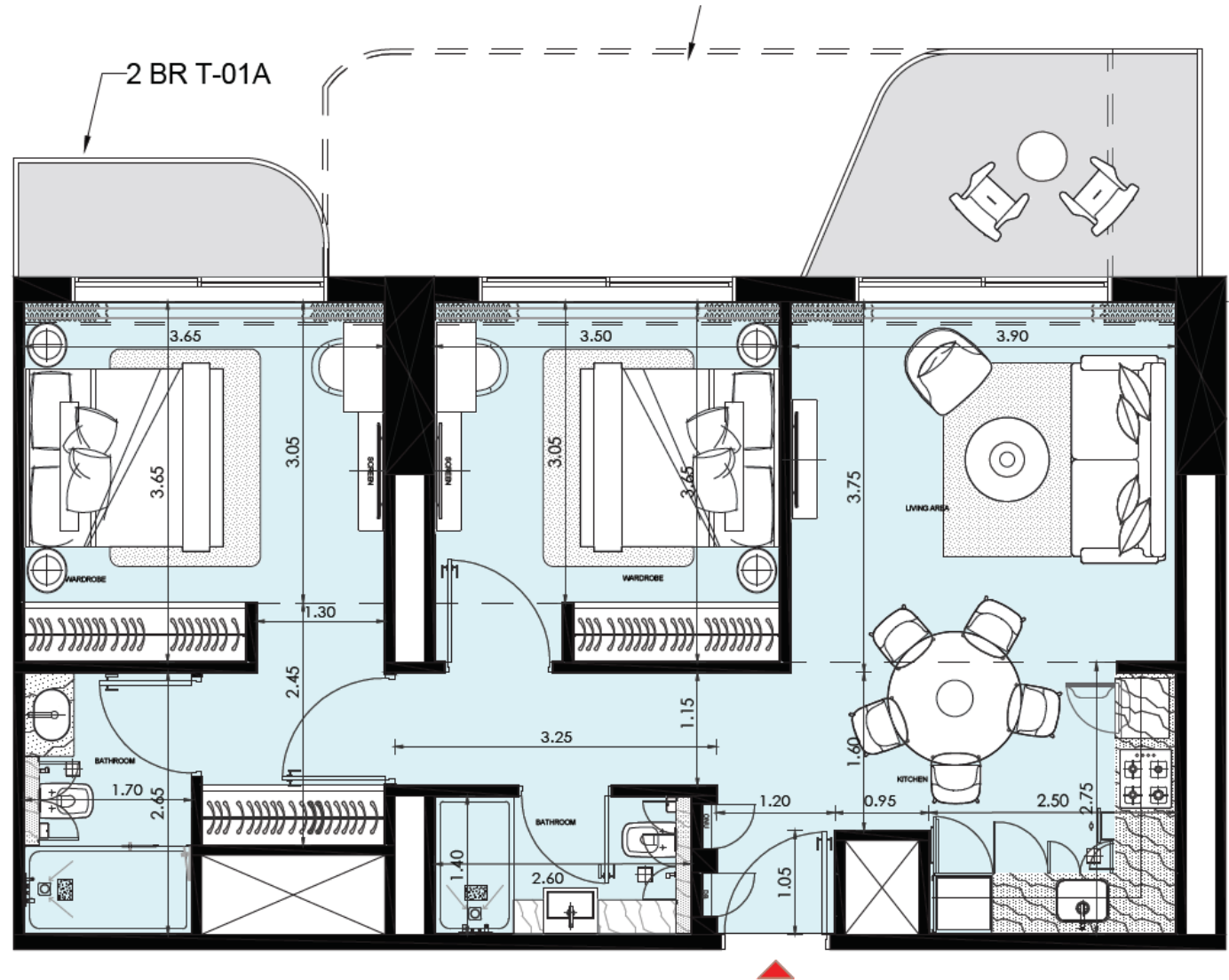
1 Bed Layout

- Size: 600 sq.ft to 920 sq.ft
- Total 18 types of layouts
- Price: AED 1.5M onwards



2 Bed Layout

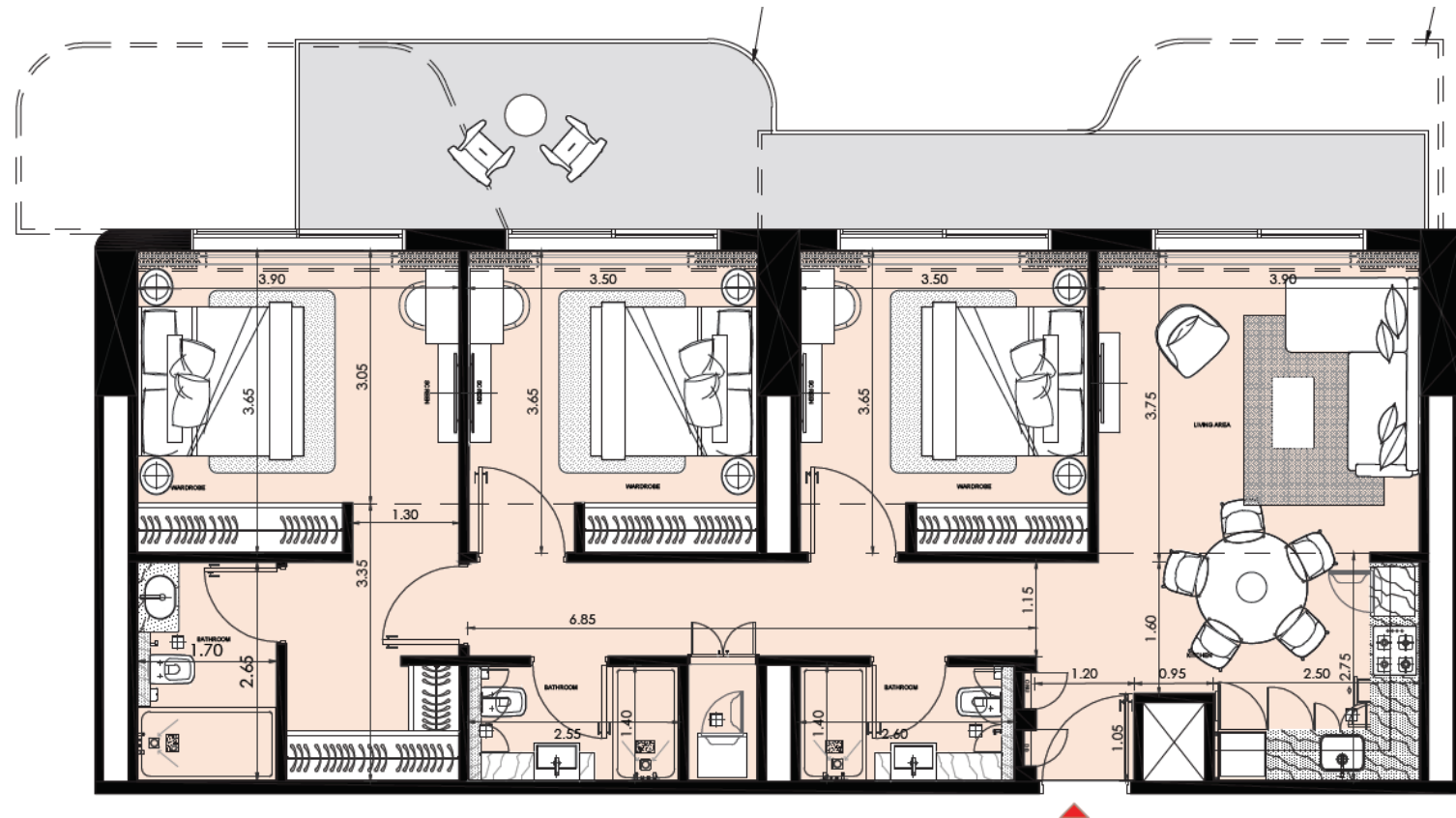
- Size: 1000 sq.ft to 1240 sq.ft
- Total 15 types of layouts
- Price: AED 2.7M onwards



Source: Salesforce dated 21st Jan 2025

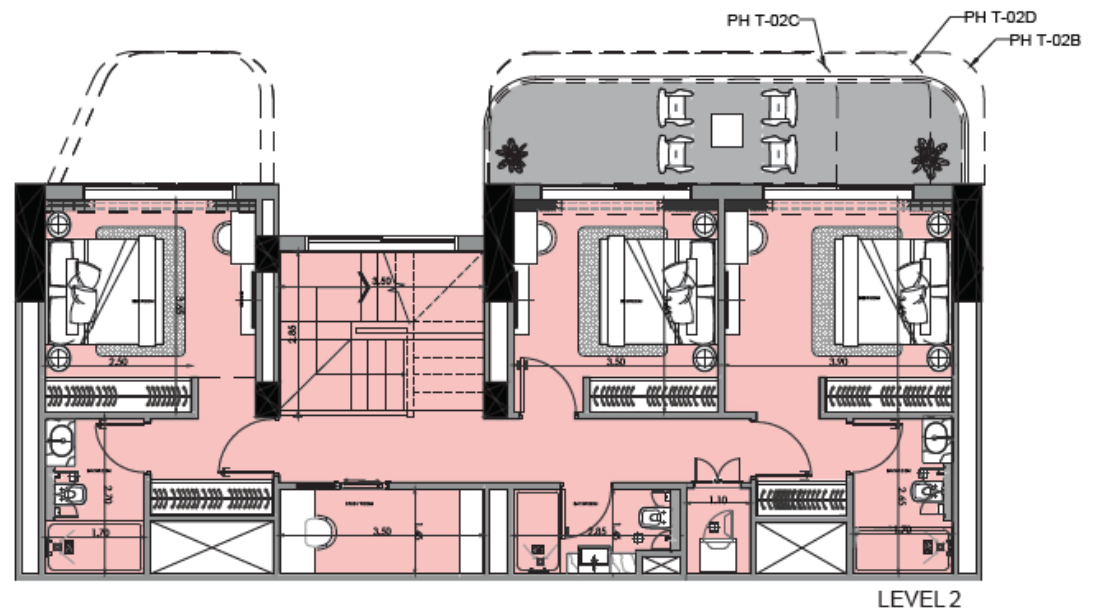
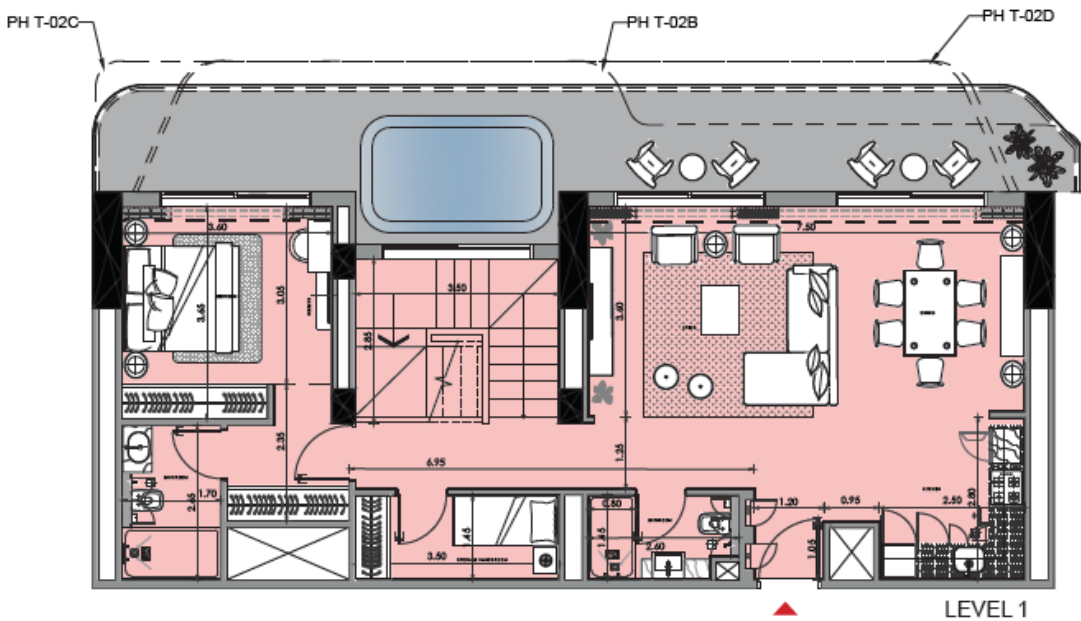
3 Bed Layout

- Size: 1340 sq.ft to 1480 sq.ft
- Total 7 types of layouts
- Price: AED 3.8M onwards



Penthouse Layout

- Size: 2630 sq.ft to 5680 sq.ft
- Total 10 types of layouts
- Price: AED 6.9M onwards



Source: Salesforce dated 21st Jan 2025