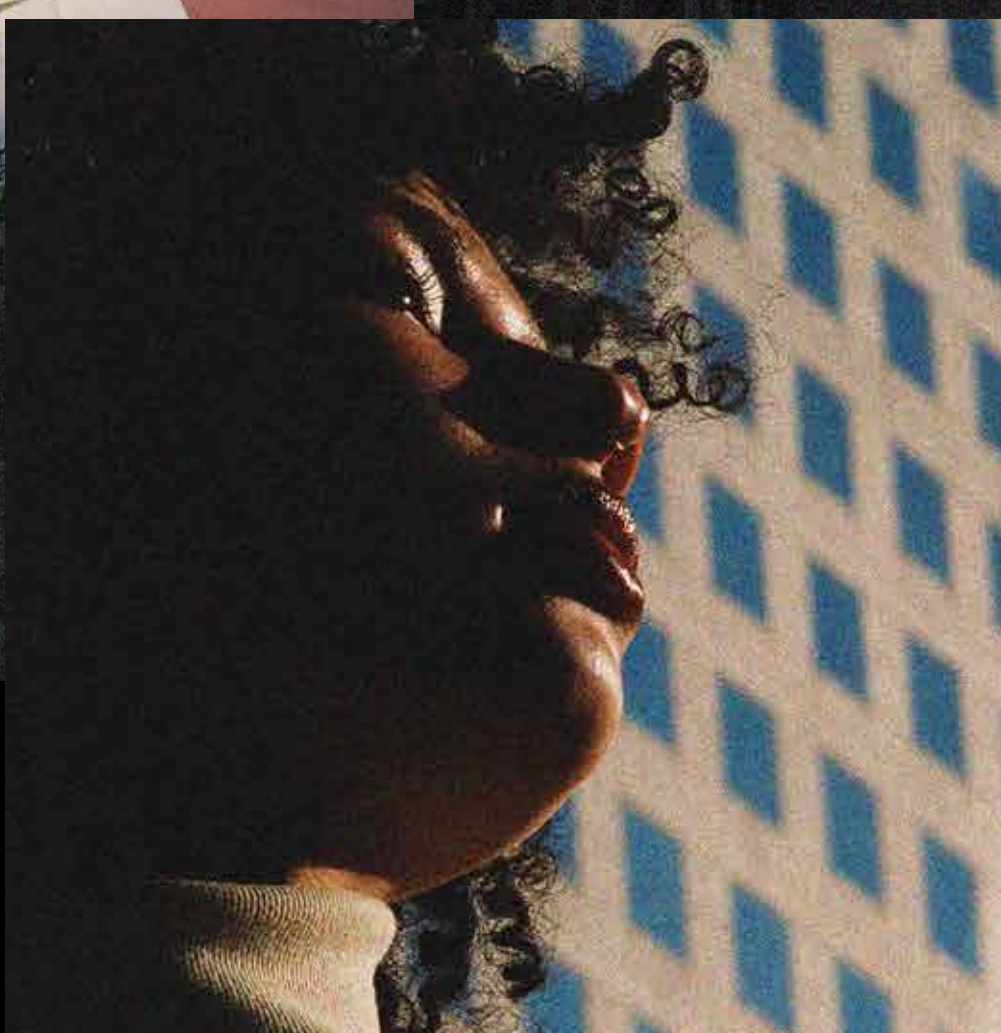
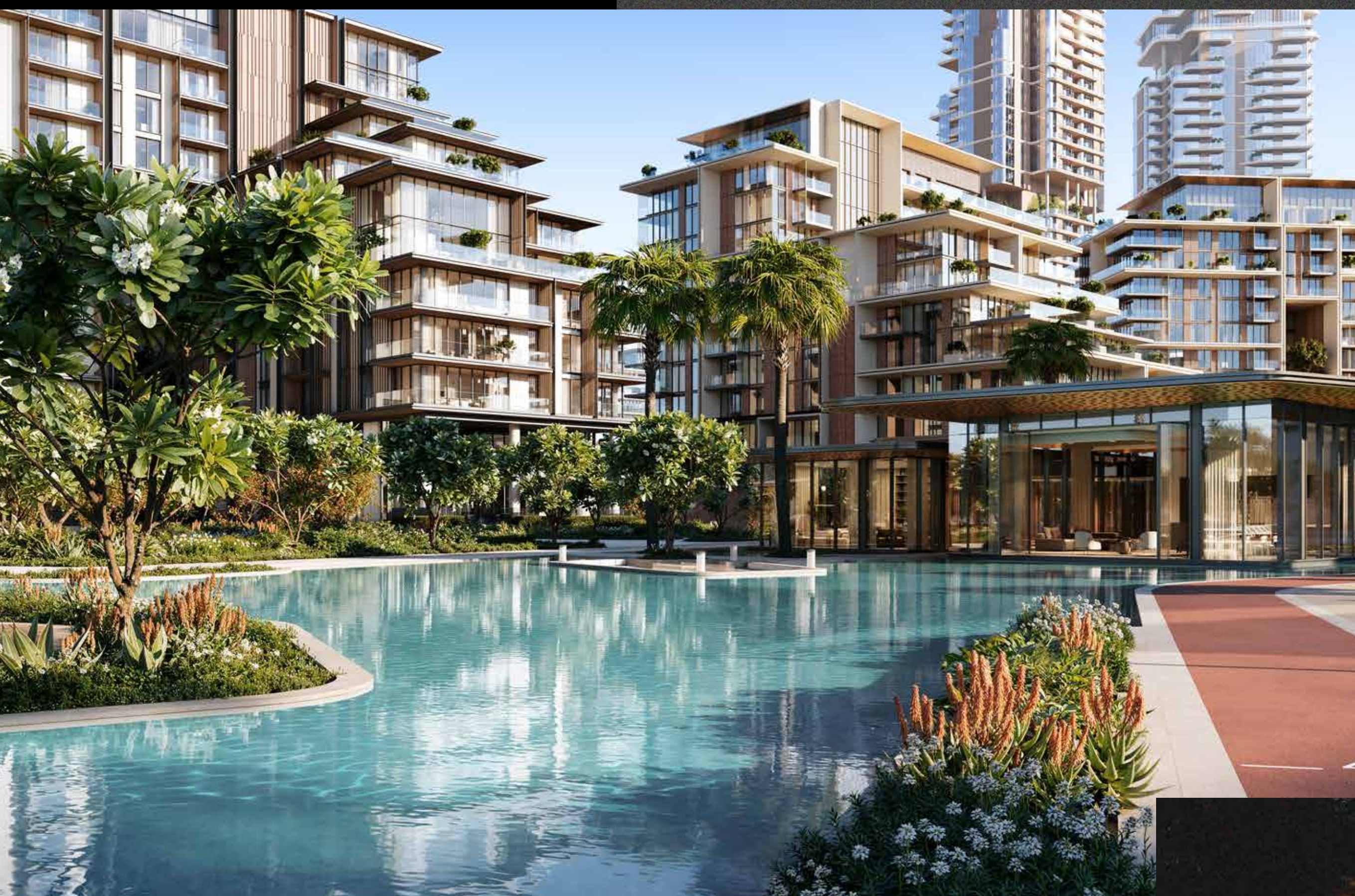


CITY WALK

C R E S T L A N E



*ALL PRICES ARE IN AED

PAYMENT PLAN

20%

DOWN PAYMENT

ON BOOKING

10%

1ST INSTALMENT

JUNE 2025

5%

2ND INSTALMENT

OCTOBER 2025

10%

3RD INSTALMENT

MARCH 2026

10%

4TH INSTALMENT

AUGUST 2026

10%

5TH INSTALMENT

JANUARY 2027

10%

6TH INSTALMENT

MAY 2027

25%

7TH INSTALMENT (HANDOVER)

OCTOBER 2028

*ESTIMATED CONSTRUCTION COMPLETION: OCTOBER 2028