



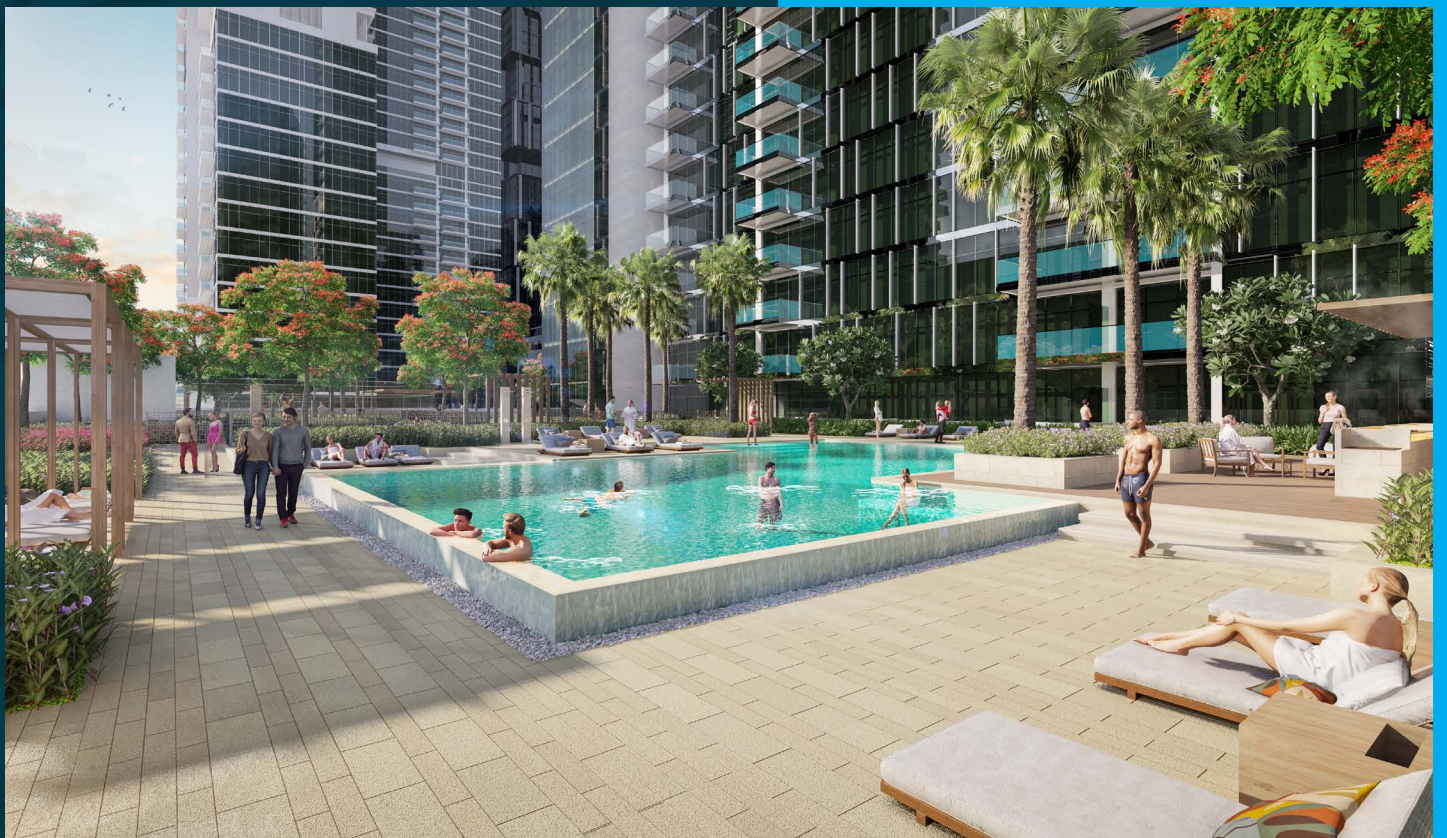
PARK VIEWS RESIDENCES



IT TAKES TWO TO MAKE BELONGING A WORK OF ART.

Park Views Residences brings you fine living done in both ways – luxury from every angle and accessibility in a prime location in Dubai. Take in views of Zabeel Park and make a modern lifestyle yours while enjoying the convenience of a central location with easy access to the city's most popular shopping and dining destinations

Park Views Residences, under the wasl1 master development, relies on a wealth of amenities and spectacular features in 1, 2, and 3-bedroom apartments to indulge in, with an architecture concept designed for exquisite tastes unlike any other.



AMENITIES



Children's play
areas



Swimming
pool



Gym



Barbeque
area



Splash pad



Retail outlets



Proximity to
Max Metro Station



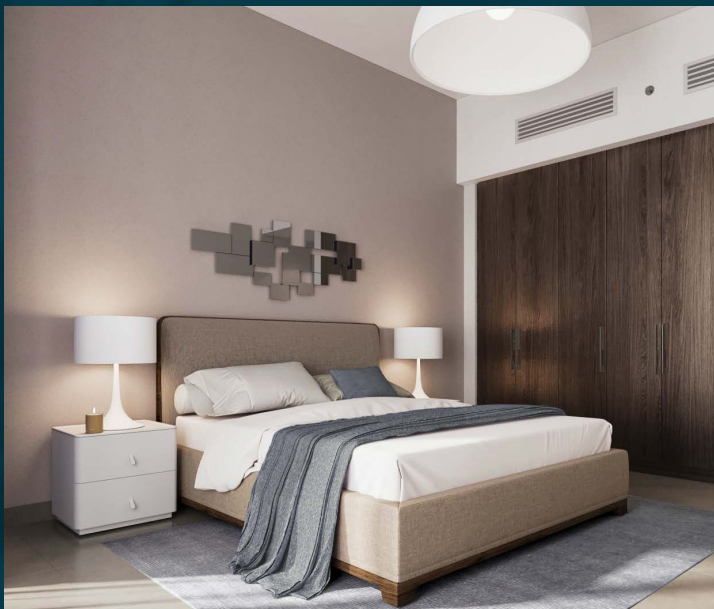
Multipurpose
hall

A WHOLE LOT OF LUXURY TIMES TWO.

As part of wasl1's unparalleled vision of a mixed-use master development, the two towers of Park Views Residences boast comfortable elite living with access to a number of facilities that include retail, dining, and leisure outlets, along with entertainment facilities for every family member.



- Located between Zabeel Park, Sheikh Zayed Road and Max Metro Station
- Luxury residential tower with retail
- 44 floors (3B + G + 44)
- 465 residential units
 - 1-bedroom 75 nos. (2 types)
 - 2-bedroom 235 nos. (4 types)
 - 3-bedroom 155 nos. (2 types)
- Combination of composite cladding, aluminium curtain wall and typical tinted double glass with aluminium window frames
- Empower district cooling
- Porcelain tiles in the living, dining, kitchen, bedroom and balcony areas



A LOCATION WITHIN THE BEST OF TWO WORLDS.

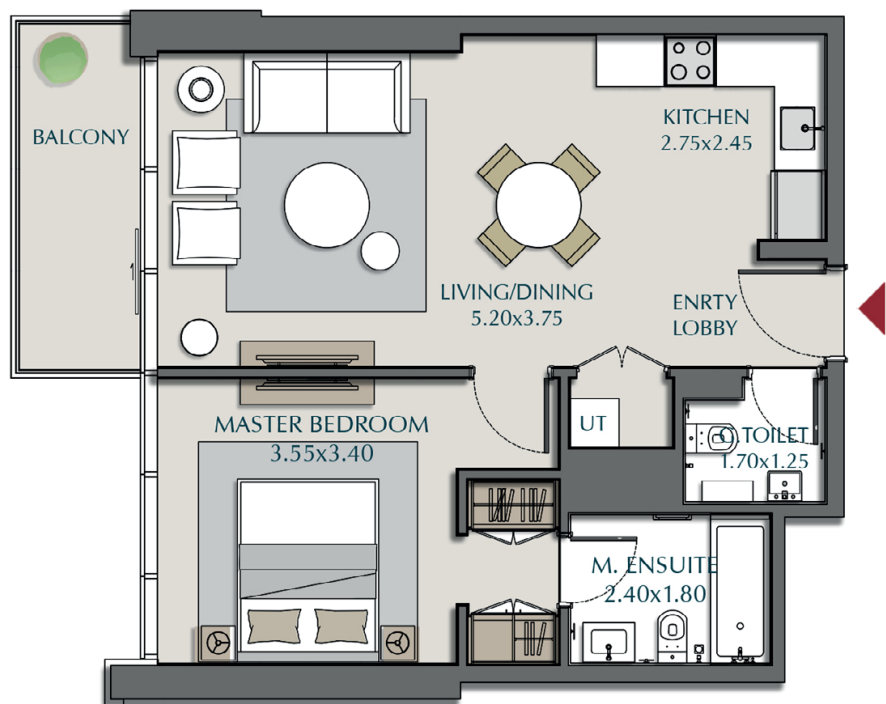
Park Views Residences is positioned in a special location of the city, where every end of Dubai is within your reach and offers unique access to all major roads, leisure facilities, and business hubs.

The residents of the towers seamlessly enjoy ease in transport with Sheikh Zayed Road and Max Metro Station in very close proximity.



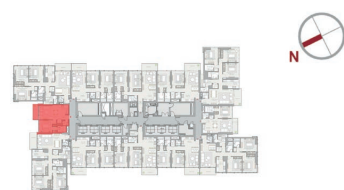
FLOOR PLANS

1-BEDROOM



1-BEDROOM 1A

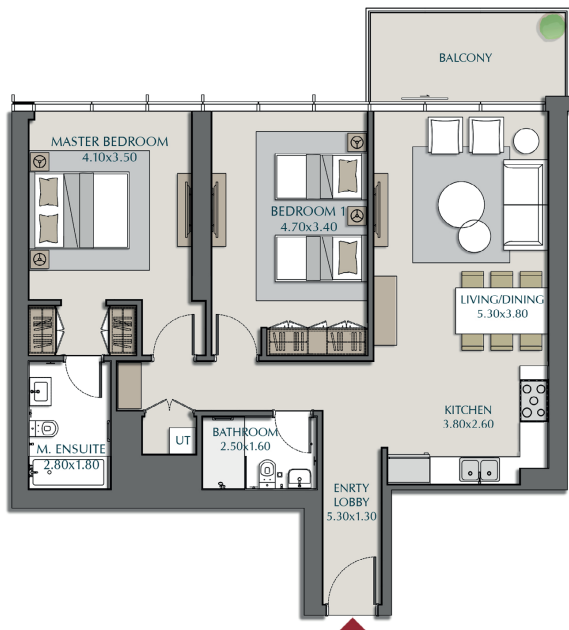
| | |
|--------------|---|
| SUITE AREA | 649.17 ft ² = 60.31 m ² |
| BALCONY AREA | 65.34 ft ² = 6.07 m ² |
| <hr/> | |
| TOTAL AREA | 714.51 ft ² = 66.38 m ² |



LEVELS: (4TH, 5TH TO 18TH, 22ND TO 44TH)

FLOOR PLANS

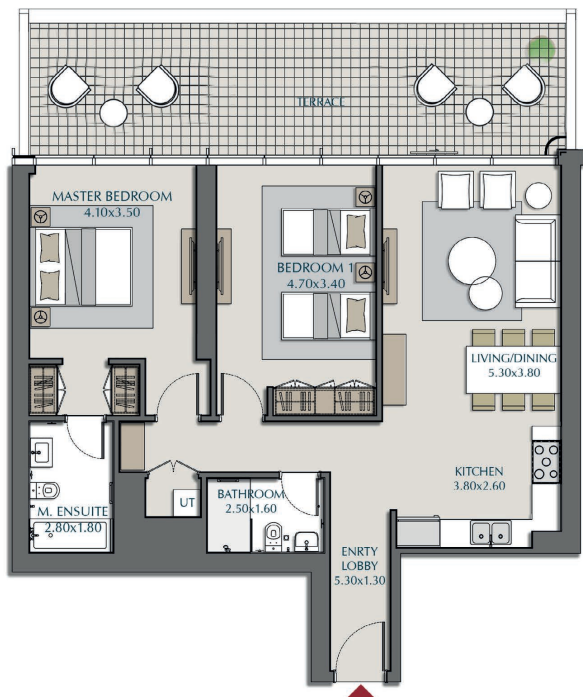
2-BEDROOM



| 2-BEDROOM 1-A | | |
|---------------|-------------------------|--|
| SUITE AREA | 1085.11 ft ² | = 100.81 m ² |
| BALCONY AREA | 90.31 ft ² | = 8.39 m ² |
| TOTAL AREA | | 1175.42 ft ² = 109.2 m ² |



LEVELS: (5TH TO 18TH, 21ST, 22ND TO 44TH)



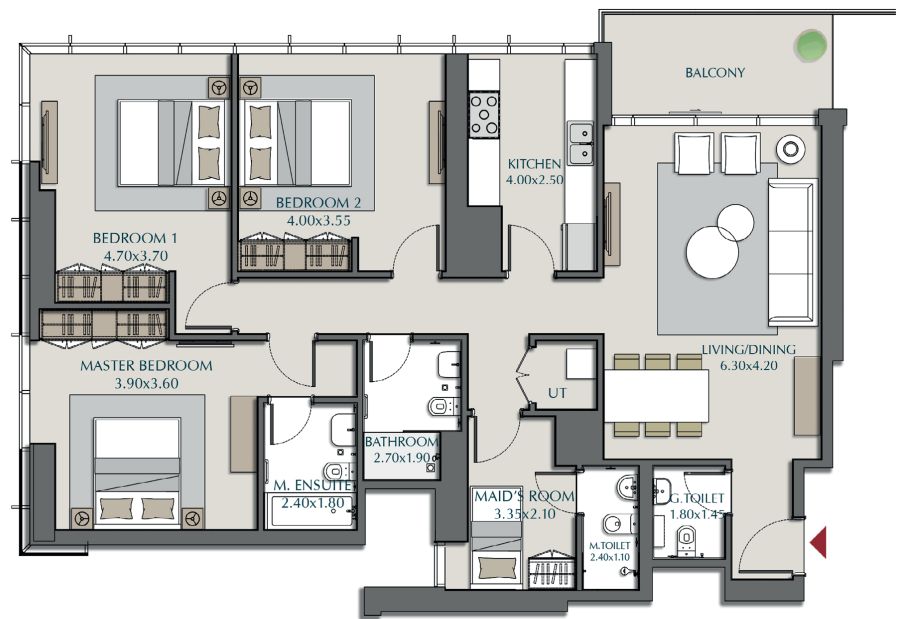
| 2-BEDROOM 1-A - 2 | | |
|-------------------|-------------------------|---|
| SUITE AREA | 1084.14 ft ² | = 100.72 m ² |
| TERRACE AREA | 355.96 ft ² | = 33.07 m ² |
| TOTAL AREA | | 1440.10 ft ² = 133.79 m ² |



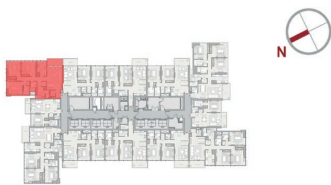
LEVELS: (4TH)

FLOOR PLANS

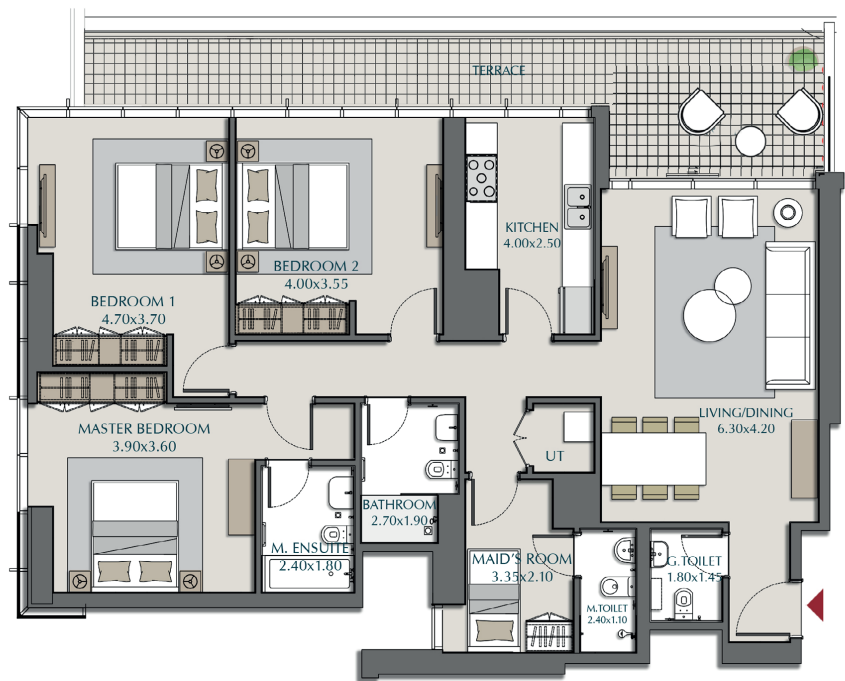
3-BEDROOM



| 3-BEDROOM 1A | |
|--------------|---|
| SUITE AREA | 1538.38 ft ² = 142.92 m ² |
| BALCONY AREA | 93.54 ft ² = 8.69 m ² |
| TOTAL AREA | 1631.92 ft ² = 151.61 m ² |



LEVELS: (5TH TO 18TH , 21ST , 22ND TO 44TH)



| 3-BEDROOM 1A - 2 | |
|------------------|---|
| SUITE AREA | 1538.38 ft ² = 142.92 m ² |
| TERRACE AREA | 295.47 ft ² = 27.45 m ² |
| TOTAL AREA | 1833.85ft ² = 170.37 m ² |



LEVELS: (4TH)

PAYMENT PLAN

5%

on booking

55%

during construction

40%

on handover

