

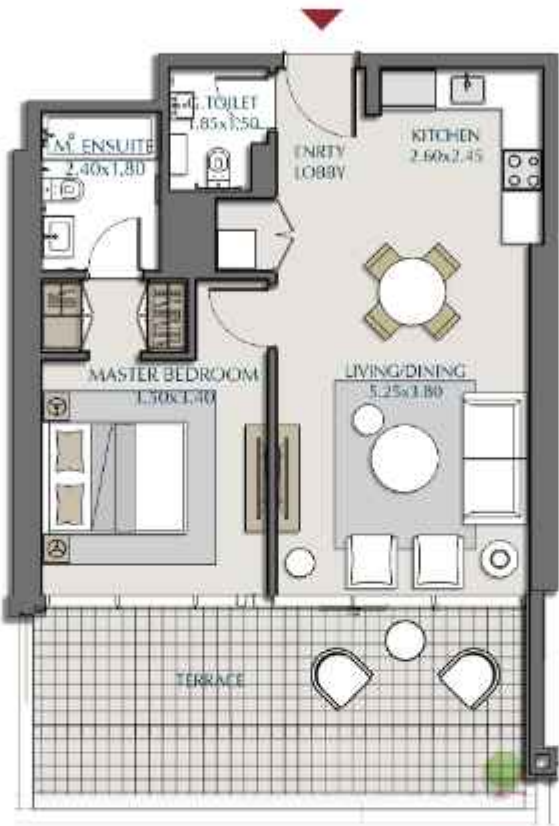
PARK VIEWS RESIDENCE A - 1BR-1A - 1



LEVELS: (5<sup>TH</sup> TO 18<sup>TH</sup>, 21<sup>ST</sup>, 22<sup>ND</sup> TO 36<sup>TH</sup>)

<b>1BR-1A - 1- ( 503-1803,2103,2203-3603,504-1804,2104,2204-3604 )</b>	
SUITE AREA	654.12 ft <sup>2</sup> = 60.77 m <sup>2</sup>
BALCONY AREA	93.54 ft <sup>2</sup> = 8.69 m <sup>2</sup>
<hr/>	
TOTAL AREA	747.66 ft <sup>2</sup> = 69.46 m <sup>2</sup>

"All room dimensions are in metric and measured to structural elements and exclude wall finishes and construction tolerances. All materials, dimensions & drawings features and amenities are approximate at the time of printing. Information subject to change without notice. Actual suite areas may vary from the stated area. Drawings are not to scale E&EO. The developer reserves the right to make revisions."



LEVELS: (4<sup>TH</sup>)

1BR-1A - 2 - 404	
SUITE AREA	654.55 ft <sup>2</sup> = 60.81 m <sup>2</sup>
TERRACE AREA	256.29 ft <sup>2</sup> = 23.81 m <sup>2</sup>
<hr/>	
TOTAL AREA	910.84 ft <sup>2</sup> = 84.62 m <sup>2</sup>



LEVELS: (4<sup>TH</sup>)

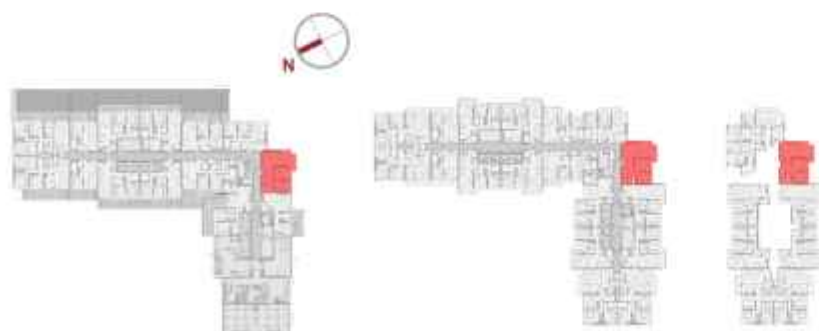
1BR-1A - 3 - 403		
SUITE AREA	654.23 ft <sup>2</sup>	= 60.78 m <sup>2</sup>
TERRACE AREA	724.20 ft <sup>2</sup>	= 67.28 m <sup>2</sup>
TOTAL AREA	1378.43 ft <sup>2</sup>	= 128.06 m <sup>2</sup>



LEVELS: (4<sup>TH</sup>)

1BR-2A - 414	
SUITE AREA	775.54 ft² = 72.05 m²
TERRACE AREA	352.30 ft² = 32.73 m²
<hr/>	
TOTAL AREA	1127.84 ft² = 104.78 m²

# PARK VIEWS RESIDENCE A - 2BR-1A



## 2BR-1A ( 412-1812,2112,2212 - 3612,3702,3802-4202 )

SUITE AREA	1046.68 ft <sup>2</sup> = 97.24 m <sup>2</sup>
BALCONY AREA	73.52 ft <sup>2</sup> = 6.83 m <sup>2</sup>
<b>TOTAL AREA</b>	<b>1120.20 ft<sup>2</sup> = 104.07 m<sup>2</sup></b>

LEVELS: (4<sup>TH</sup> TO 18<sup>TH</sup>, 21<sup>ST</sup>, 22<sup>ND</sup> TO 36<sup>TH</sup>, 37<sup>TH</sup>, 38<sup>TH</sup> TO 42<sup>ND</sup>)



LEVELS: (5<sup>TH</sup> TO 18<sup>TH</sup>, 21<sup>ST</sup>, 22<sup>ND</sup> TO 36<sup>TH</sup>)

2BR-1B - 1- ( 509-1809, 2109, 2209-3609 )			
SUITE AREA	986.84 ft <sup>2</sup> =	91.68 m <sup>2</sup>	
BALCONY AREA	79.65 ft <sup>2</sup> =	7.40 m <sup>2</sup>	
TOTAL AREA		1066.49 ft <sup>2</sup> =	99.08 m <sup>2</sup>



LEVELS: (4<sup>TH</sup>)

2BR-1B - 2 - 409		
SUITE AREA	986.84 ft <sup>2</sup> =	91.68 m <sup>2</sup>
TERRACE AREA	1027.95 ft <sup>2</sup> =	95.50 m <sup>2</sup>
<hr/>		
TOTAL AREA	2014.79 ft <sup>2</sup> =	187.18 m <sup>2</sup>

# PARK VIEWS RESIDENCE A - 2BR-2A - 1



LEVELS: (5<sup>TH</sup> TO 18<sup>TH</sup>, 21<sup>ST</sup>, 22<sup>ND</sup> TO 36<sup>TH</sup>)

## 2BR-2A - 1- ( 513-1813,2113,2213-3613 )

SUITE AREA	1130.75 ft <sup>2</sup> = 105.05 m <sup>2</sup>
BALCONY AREA	51.13 ft <sup>2</sup> = 4.75 m <sup>2</sup>
<b>TOTAL AREA</b>	<b>1181.88 ft<sup>2</sup> = 109.80 m<sup>2</sup></b>



LEVELS: (4<sup>TH</sup>)

2BR-2A - 2 - 413		
SUITE AREA	1135.48 ft <sup>2</sup>	= 105.49 m <sup>2</sup>
TERRACE AREA	491.37 ft <sup>2</sup>	= 45.65 m <sup>2</sup>
<hr/>		
TOTAL AREA	1626.86 ft <sup>2</sup>	= 151.14 m <sup>2</sup>

"All room dimensions are in metric and measured to structural elements and exclude wall finishes and construction tolerances. All materials, dimensions & drawings features and amenities are approximate at the time of printing. Information subject to change without notice. Actual suite areas may vary from the stated area. Drawings are not to scale E&EO. The developer reserves the right to make revisions."



2BR-3A - 1- ( 511-1811,2111,2211-3611 )		
SUITE AREA	1061.75 ft²	= 98.64 m²
BALCONY AREA	76.32 ft²	= 7.09 m²
TOTAL AREA		1138.07 ft² = 105.73 m²

LEVELS: (5<sup>TH</sup> TO 18<sup>TH</sup>, 21<sup>ST</sup>, 22<sup>ND</sup> TO 36<sup>TH</sup>)

"All room dimensions are in metric and measured to structural elements and exclude wall finishes and construction tolerances. All materials, dimensions & drawings features and amenities are approximate at the time of printing. Information subject to change without notice. Actual suite areas may vary from the stated area. Drawings are not to scale E&EO. The developer reserves the right to make revisions."



LEVELS: (4<sup>TH</sup>)

2BR-3A - 2 - 411		
SUITE AREA	1061.75 ft²	= 98.64 m²
TERRACE AREA	221.09 ft²	= 20.54 m²
<hr/>		
TOTAL AREA	1282.84 ft²	= 119.18 m²

"All room dimensions are in metric and measured to structural elements and exclude wall finishes and construction tolerances. All materials, dimensions & drawings features and amenities are approximate at the time of printing. Information subject to change without notice. Actual suite areas may vary from the stated area. Drawings are not to scale E&EO. The developer reserves the right to make revisions."

# PARK VIEWS RESIDENCE A - 2BR-4A - 1



**2BR-4A - 1 - ( 510 - 1810,2110,2210-3410 )**

SUITE AREA 1191.46 ft<sup>2</sup> = 110.69 m<sup>2</sup>

BALCONY AREA 79.65 ft<sup>2</sup> = 7.40 m<sup>2</sup>

**TOTAL AREA 1271.11 ft<sup>2</sup> = 118.09 m<sup>2</sup>**

**LEVELS: (5<sup>TH</sup> TO 18<sup>TH</sup>, 21<sup>ST</sup>, 22<sup>ND</sup> TO 34<sup>TH</sup>)**



LEVELS: (4<sup>TH</sup>)

## 2BR-4A - 2 - 410

SUITE AREA	1191.56 ft <sup>2</sup> = 110.70 m <sup>2</sup>
TERRACE AREA	434.00 ft <sup>2</sup> = 40.32 m <sup>2</sup>
<b>TOTAL AREA</b>	<b>1625.57 ft<sup>2</sup> = 151.02 m<sup>2</sup></b>



LEVELS: (35<sup>TH</sup> & 36<sup>TH</sup>)

## 2BR-4B - ( 3510,3610 )

SUITE AREA	1128.92 ft <sup>2</sup> = 104.88 m <sup>2</sup>
BALCONY AREA	79.65 ft <sup>2</sup> = 7.40 m <sup>2</sup>
<b>TOTAL AREA</b>	<b>1208.57 ft<sup>2</sup> = 112.28 m<sup>2</sup></b>



LEVELS: (5<sup>TH</sup> TO 18<sup>TH</sup>, 22<sup>ND</sup> TO 36<sup>TH</sup>)

2BR-5A - 1- ( 505-1805, 2205-3605 )		
SUITE AREA	1072.19 ft²	= 99.61 m²
BALCONY AREA	67.70 ft²	= 6.29 m²
TOTAL AREA		1139.90 ft² = 105.90 m²



LEVELS: (4<sup>TH</sup>)

2BR-5A - 2 - 405	
SUITE AREA	1072.19 ft <sup>2</sup> = 99.61 m <sup>2</sup>
TERRACE AREA	767.90 ft <sup>2</sup> = 71.34 m <sup>2</sup>
TOTAL AREA	1840.09 ft <sup>2</sup> = 170.95 m <sup>2</sup>

# PARK VIEWS RESIDENCE A - 2BR-5B - 1



LEVELS: (5<sup>TH</sup> TO 18<sup>TH</sup>, 22<sup>ND</sup> TO 36<sup>TH</sup>)

## 2BR-5B - 1 - ( 507-1807 , 2207-3607 )

SUITE AREA	1268.20 ft <sup>2</sup> = 117.82 m <sup>2</sup>
BALCONY AREA	67.70 ft <sup>2</sup> = 6.29 m <sup>2</sup>
<b>TOTAL AREA</b>	<b>1335.91 ft<sup>2</sup> = 124.11 m<sup>2</sup></b>



LEVELS: (4<sup>TH</sup>)

2BR-5B - 2 - 407	
SUITE AREA	1268.20 ft² = 117.82 m²
TERRACE AREA	768.54 ft² = 71.40 m²
<hr/>	
TOTAL AREA	2036.75 ft² = 189.22 m²

# PARK VIEWS RESIDENCE A - 2BR-5C - 1



LEVELS: (5<sup>TH</sup> TO 18<sup>TH</sup>, 21<sup>ST</sup>, 22<sup>ND</sup> TO 36<sup>TH</sup>)

**2BR-5C - 1 - ( 506-1806,2106,2206-3606,  
508-1808,2108,2208-3608)**

SUITE AREA 1066.06 ft<sup>2</sup> = 99.04 m<sup>2</sup>

BALCONY AREA 67.70 ft<sup>2</sup> = 6.29 m<sup>2</sup>

**TOTAL AREA 1133.76 ft<sup>2</sup> = 105.33 m<sup>2</sup>**

# PARK VIEWS RESIDENCE A - 2BR-5C - 1



LEVELS: (5<sup>TH</sup> TO 18<sup>TH</sup>, 21<sup>ST</sup>, 22<sup>ND</sup> TO 36<sup>TH</sup>)

## 2BR-5C - 1 - (515-1815,2115,2215-3615)

SUITE AREA	1066.06 ft <sup>2</sup> = 99.04 m <sup>2</sup>
BALCONY AREA	67.70 ft <sup>2</sup> = 6.29 m <sup>2</sup>
<b>TOTAL AREA</b>	<b>1133.76 ft<sup>2</sup> = 105.33 m<sup>2</sup></b>

# PARK VIEWS RESIDENCE A - 2BR-5C - 1



**2BR-5C - 1 - ( 3703,3803- 4203, 3705, 3805-4205)**

SUITE AREA	1066.06 ft <sup>2</sup> = 99.04 m <sup>2</sup>
BALCONY AREA	67.70 ft <sup>2</sup> = 6.29 m <sup>2</sup>
<b>TOTAL AREA</b>	<b>1133.76 ft<sup>2</sup> = 105.33 m<sup>2</sup></b>

**LEVELS: (37<sup>TH</sup> , 38<sup>TH</sup> TO 42<sup>ND</sup>)**



LEVELS: (4<sup>TH</sup>)

## 2BR-5C - 2 - 406,408

SUITE AREA	1064.98 ft <sup>2</sup> = 98.94 m <sup>2</sup>
TERRACE AREA	363.50 ft <sup>2</sup> = 33.77 m <sup>2</sup>
<b>TOTAL AREA</b>	<b>1428.48 ft<sup>2</sup> = 132.71 m<sup>2</sup></b>

# PARK VIEWS RESIDENCE A - 2BR-5E



LEVELS: (5<sup>TH</sup> TO 18<sup>TH</sup>, 21<sup>ST</sup>, 22<sup>ND</sup> TO 36<sup>TH</sup>, 37<sup>TH</sup>, 38<sup>TH</sup> TO 42<sup>ND</sup>)

**2BR-5E - ( 514-1814, 2114, 2214- 3614, 3704, 3804-4204 )**

SUITE AREA	1076.50 ft <sup>2</sup> = 100.01 m <sup>2</sup>
BALCONY AREA	68.14 ft <sup>2</sup> = 6.33 m <sup>2</sup>
<b>TOTAL AREA</b>	<b>1144.63 ft<sup>2</sup> = 106.34 m<sup>2</sup></b>



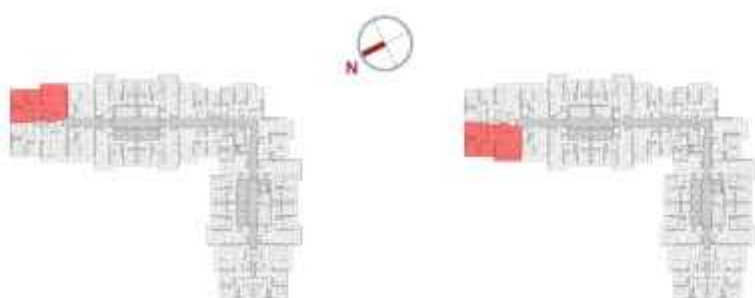
LEVELS: (5<sup>TH</sup> TO 18<sup>TH</sup>, 21<sup>ST</sup>, 22<sup>ND</sup> TO 36<sup>TH</sup>, 37<sup>TH</sup>, 38<sup>TH</sup> TO 42<sup>ND</sup>)

**2BR-5F - ( 516-1816, 2116, 2216 - 3616, 3706, 3806 - 4206 )**

SUITE AREA 1063.26 ft<sup>2</sup> = 98.78 m<sup>2</sup>

BALCONY AREA 67.60 ft<sup>2</sup> = 6.28 m<sup>2</sup>

**TOTAL AREA 1130.86 ft<sup>2</sup> = 105.06 m<sup>2</sup>**



LEVELS: (5<sup>TH</sup> TO 18<sup>TH</sup>, 21<sup>ST</sup>, 22<sup>ND</sup> TO 36<sup>TH</sup>, 37<sup>TH</sup>, 38<sup>TH</sup> TO 42<sup>ND</sup>)

**3BR-1A - 1 ( 501 - 1801, 2101 - 3601 ,  
502 - 1802, 2102-3602 )**

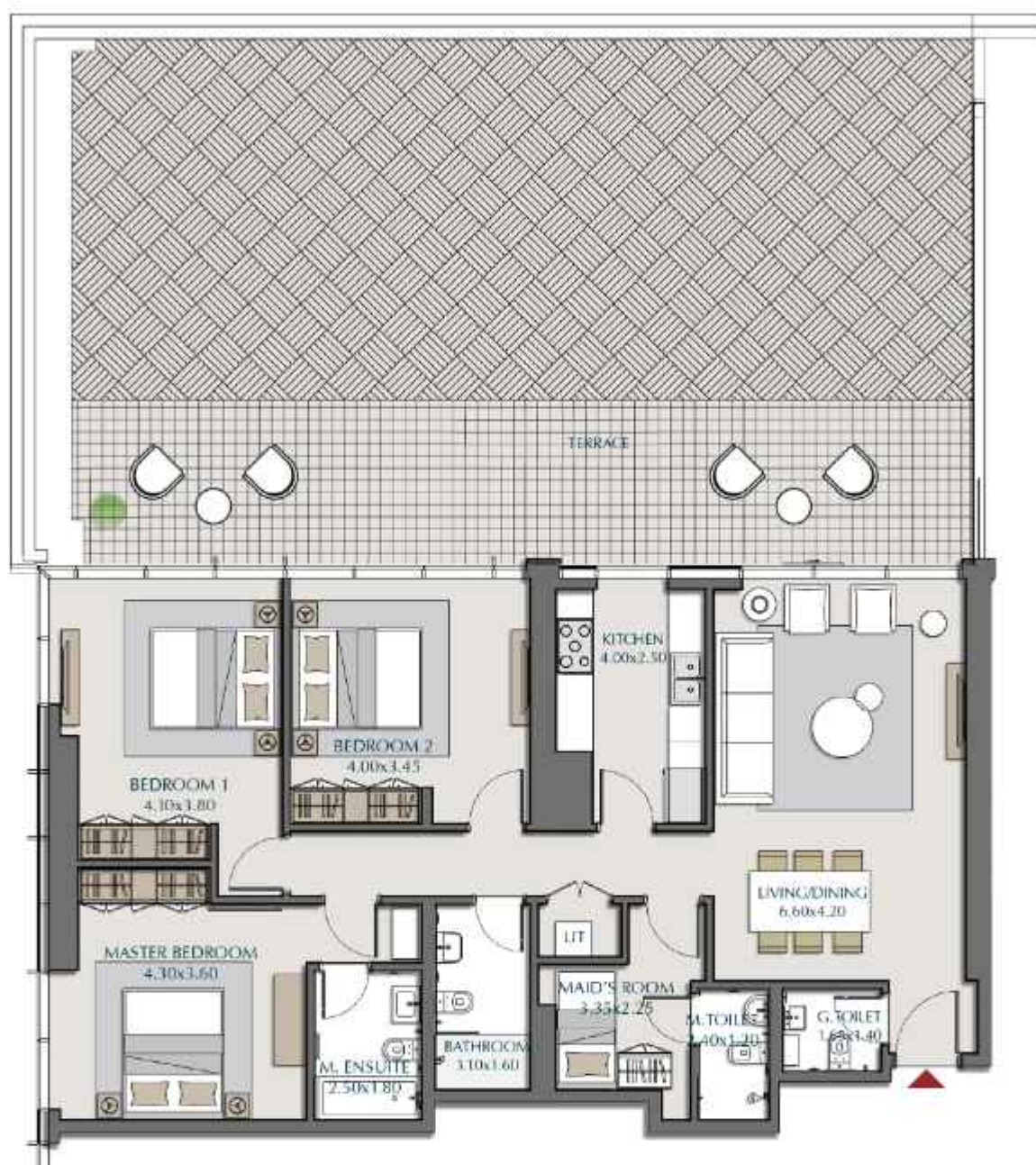
SUITE AREA	1484.67 ft <sup>2</sup> = 137.93 m <sup>2</sup>
BALCONY AREA	113.56 ft <sup>2</sup> = 10.55 m <sup>2</sup>
<b>TOTAL AREA</b>	<b>1598.23 ft<sup>2</sup> = 148.48 m<sup>2</sup></b>



3BR-1A - 2 - 402

SUITE AREA	1485.63 ft <sup>2</sup> = 138.02 m <sup>2</sup>
TERRACE AREA	443.90 ft <sup>2</sup> = 41.24 m <sup>2</sup>
TOTAL AREA	1929.54 ft <sup>2</sup> = 179.26 m <sup>2</sup>

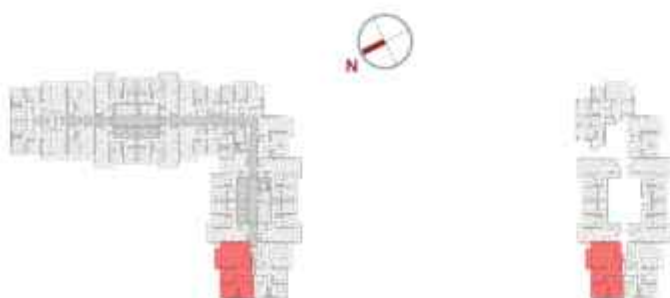
LEVELS: (4<sup>TH</sup>)



LEVELS: (4<sup>TH</sup>)

## 3BR-1A - 3 -401

SUITE AREA	1484.67 ft <sup>2</sup> = 137.93 m <sup>2</sup>
TERRACE AREA	1495.43 ft <sup>2</sup> = 138.93 m <sup>2</sup>
<b>TOTAL AREA</b>	<b>2980.10 ft<sup>2</sup> = 276.86 m<sup>2</sup></b>



LEVELS: (5<sup>TH</sup> TO 18<sup>TH</sup>, 21<sup>ST</sup>, 22<sup>ND</sup> TO 36<sup>TH</sup>, 37<sup>TH</sup>, 38<sup>TH</sup> TO 42<sup>ND</sup>)

**3BR-1A - 4 - ( 517 - 1817, 2117 - 3617, 3707, 3807 - 4207 )**

SUITE AREA	1485.31 ft <sup>2</sup> = 137.99 m <sup>2</sup>
BALCONY AREA	89.56 ft <sup>2</sup> = 8.32 m <sup>2</sup>
<b>TOTAL AREA</b>	<b>1574.87 ft<sup>2</sup> = 146.31 m<sup>2</sup></b>



LEVELS: (5<sup>TH</sup> TO 18<sup>TH</sup>, 21<sup>ST</sup>, 22<sup>ND</sup> TO 36<sup>TH</sup>, 37<sup>TH</sup>, 38<sup>TH</sup> TO 42<sup>ND</sup>)

**3BR-1A - 4 - ( 518 - 1818, 2118-3618,3708, 3808 - 4208 )**

SUITE AREA 1485.31 ft<sup>2</sup> = 137.99 m<sup>2</sup>

BALCONY AREA 89.56 ft<sup>2</sup> = 8.32 m<sup>2</sup>

**TOTAL AREA 1574.87 ft<sup>2</sup> = 146.31 m<sup>2</sup>**



LEVELS: (38<sup>TH</sup> TO 42<sup>ND</sup>)

3BR-2A - ( 3801-4201)	
SUITE AREA	2030.72 ft <sup>2</sup> = 188.66 m <sup>2</sup>
BALCONY AREA	76.32 ft <sup>2</sup> = 7.09 m <sup>2</sup>
<hr/>	
TOTAL AREA	2107.04 ft <sup>2</sup> = 195.75 m <sup>2</sup>



LEVELS: (37<sup>TH</sup>)

3BR-3A - 3701		
SUITE AREA	1285.75 ft <sup>2</sup>	= 119.45 m <sup>2</sup>
BALCONY/TERRACE AREA	466.51 ft <sup>2</sup>	= 43.34 m <sup>2</sup>
TOTAL AREA	1752.26 ft <sup>2</sup>	= 162.79 m <sup>2</sup>

PARK VIEWS RESIDENCE A - 4BR-1A D1 (U)



LEVELS: (21<sup>ST</sup>)

4BR-1A D1 (U) - 2105		
SUITE AREA	2132.76 ft <sup>2</sup>	= 198.14 m <sup>2</sup>
BALCONY AREA	67.70 ft <sup>2</sup>	= 6.29 m <sup>2</sup>
<hr/>		
TOTAL AREA	2200.47 ft <sup>2</sup>	= 204.43 m <sup>2</sup>

"All room dimensions are in metric and measured to structural elements and exclude wall finishes and construction tolerances. All materials, dimensions & drawings features and amenities are approximate at the time of printing. Information subject to change without notice. Actual suite areas may vary from the stated area. Drawings are not to scale E&EO. The developer reserves the right to make revisions."



4BR-1A D2 (L) - 2005

SUITE AREA	2132.76 ft <sup>2</sup> = 198.41 m <sup>2</sup>
TOTAL AREA	2132.76 ft <sup>2</sup> = 198.41 m <sup>2</sup>

LEVELS: (20<sup>TH</sup>)



LEVELS: (21<sup>ST</sup>)

4BR-1B D1 (U) - 2107		
SUITE AREA	2464.29 ft <sup>2</sup>	= 228.94 m <sup>2</sup>
BALCONY AREA	67.70 ft <sup>2</sup>	= 6.29 m <sup>2</sup>
TOTAL AREA	2531.99 ft <sup>2</sup>	= 235.23 m <sup>2</sup>



4BR-1B D1 (L) 2007

SUITE AREA	2464.29 ft <sup>2</sup> = 228.94 m <sup>2</sup>
TOTAL AREA	2464.29 ft <sup>2</sup> = 228.94 m <sup>2</sup>

LEVELS: (20<sup>TH</sup>)



LEVELS: (21<sup>ST</sup>)

**4BR-1C D1 (U) - ( 2106 )**

SUITE AREA	2118.01 ft <sup>2</sup> = 196.77 m <sup>2</sup>
BALCONY AREA	67.70 ft <sup>2</sup> = 6.29 m <sup>2</sup>
<b>TOTAL AREA</b>	<b>2185.72 ft<sup>2</sup> = 203.06 m<sup>2</sup></b>

PARK VIEWS RESIDENCE A - 4BR-1C D1 (U)



LEVELS: (21<sup>ST</sup>)

4BR-1C D1 (U) - ( 2108 )

SUITE AREA	2118.01 ft <sup>2</sup> = 196.77 m <sup>2</sup>
BALCONY AREA	67.70 ft <sup>2</sup> = 6.29 m <sup>2</sup>
<hr/>	
TOTAL AREA	2185.72 ft <sup>2</sup> = 203.06 m <sup>2</sup>



LEVELS: (20<sup>TH</sup>)

4BR-1C D1 (L) - ( 2006 )		
SUITE AREA	2118.01	ft <sup>2</sup> = 196.77 m <sup>2</sup>
TOTAL AREA	2118.01	ft <sup>2</sup> = 196.77 m <sup>2</sup>



LEVELS: (20<sup>TH</sup>)

4BR-1C D1 (L) - ( 2008 )		
SUITE AREA	2118.01	ft² = 196.77 m²
TOTAL AREA	2118.01	ft² = 196.77 m²

# PARK VIEWS RESIDENCES

## Tower B



1BR-1A - 403	
SUITE AREA	649.17 ft <sup>2</sup> = 60.31 m <sup>2</sup>
BALCONY AREA	65.34 ft <sup>2</sup> = 6.07 m <sup>2</sup>
<hr/>	
TOTAL AREA	714.51 ft <sup>2</sup> = 66.38 m <sup>2</sup>

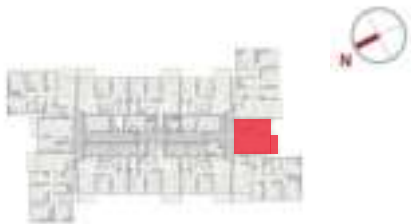
LEVELS: (4<sup>TH</sup>,5<sup>TH</sup> TO 18<sup>TH</sup>, 22<sup>ND</sup> TO 44<sup>TH</sup>)



**1BR-1A - (503-1803,2203-4403)**

SUITE AREA	649.17 ft <sup>2</sup> = 60.31 m <sup>2</sup>
BALCONY AREA	65.34 ft <sup>2</sup> = 6.07 m <sup>2</sup>
<hr/>	
TOTAL AREA	714.51 ft <sup>2</sup> = 66.38 m <sup>2</sup>

LEVELS: (4<sup>TH</sup>,5<sup>TH</sup> TO 18<sup>TH</sup>, 22<sup>ND</sup> TO 44<sup>TH</sup>)



**1BR-1A - (510-1810,2210-4410)**

SUITE AREA	649.17 ft <sup>2</sup> = 60.31 m <sup>2</sup>
BALCONY AREA	65.34 ft <sup>2</sup> = 6.07 m <sup>2</sup>
<hr/>	
TOTAL AREA	714.51 ft <sup>2</sup> = 66.38 m <sup>2</sup>

LEVELS: (4<sup>TH</sup>,5<sup>TH</sup> TO 18<sup>TH</sup>, 22<sup>ND</sup> TO 44<sup>TH</sup>)



<b>2BR-1A - 1 - (506-1806,2106,2206-4406)</b>	
SUITE AREA	1085.11 ft <sup>2</sup> = 100.81 m <sup>2</sup>
BALCONY AREA	90.31 ft <sup>2</sup> = 8.39 m <sup>2</sup>
<hr/>	
TOTAL AREA	1175.42 ft <sup>2</sup> = 109.2 m <sup>2</sup>

LEVELS: (5<sup>TH</sup> TO 18<sup>TH</sup> , 21<sup>ST</sup> , 22<sup>ND</sup> TO 44<sup>TH</sup> )



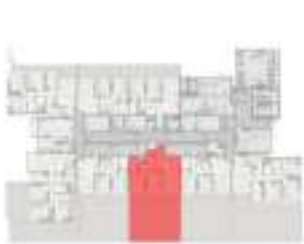
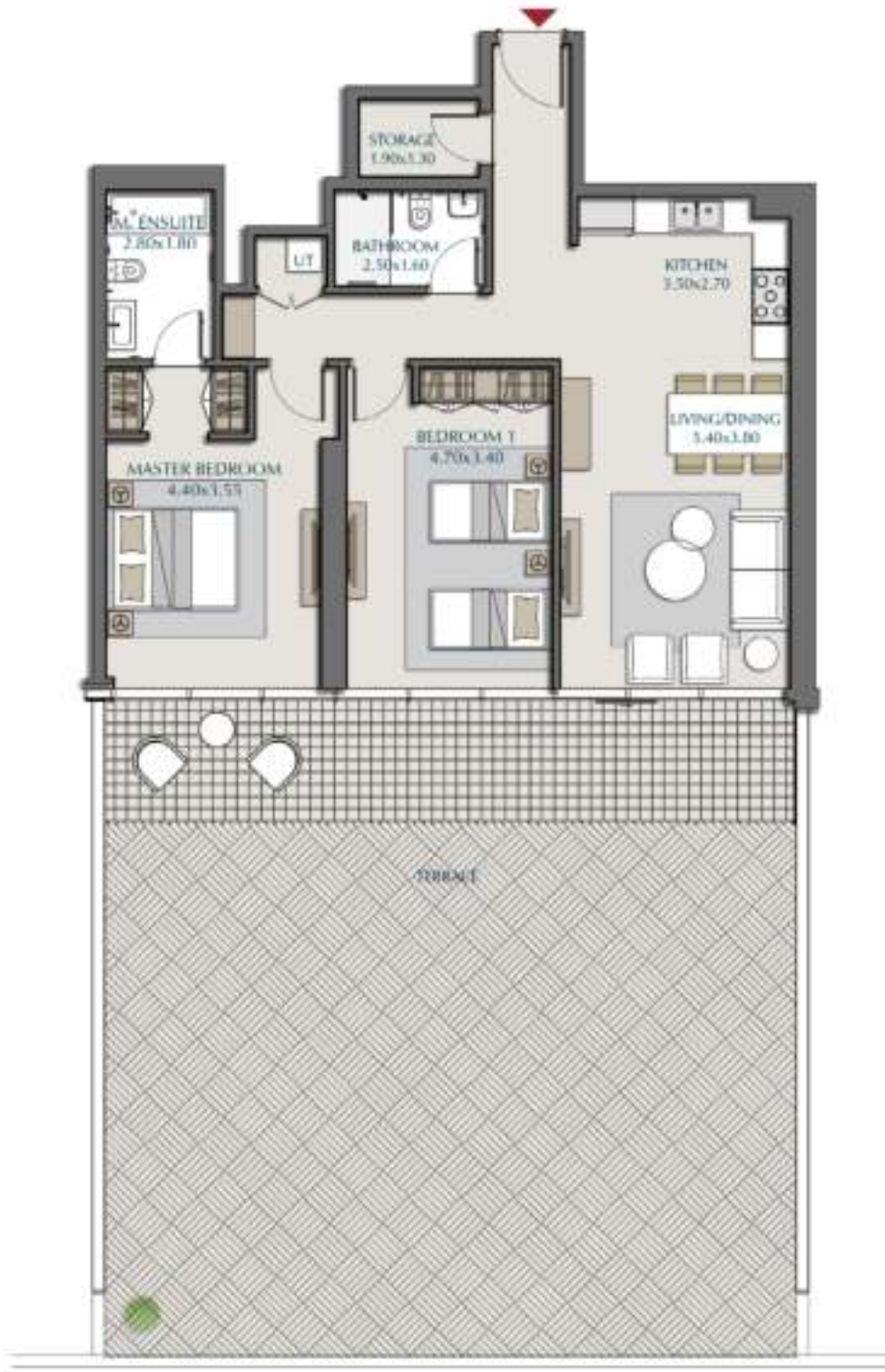
2BR-1A - 2 - 406	
SUITE AREA	1084.14 ft <sup>2</sup> = 100.72 m <sup>2</sup>
TERRACE AREA	355.96 ft <sup>2</sup> = 33.07 m <sup>2</sup>
<hr/>	
TOTAL AREA	1440.10 ft <sup>2</sup> = 133.79 m <sup>2</sup>

LEVELS: (4<sup>TH</sup>)



2BR-1B - 1 - (507-1807,2107,2207-4407)	
SUITE AREA	1121.28 ft <sup>2</sup> = 104.17 m <sup>2</sup>
BALCONY AREA	90.31 ft <sup>2</sup> = 8.39 m <sup>2</sup>
<hr/>	
TOTAL AREA	1211.59 ft <sup>2</sup> = 112.56 m <sup>2</sup>

LEVELS: (5<sup>TH</sup> TO 18<sup>TH</sup>, 21<sup>ST</sup>, 22<sup>ND</sup> TO 44<sup>TH</sup>)



**2BR-1B - 2 - 407**

SUITE AREA	1120.31 ft <sup>2</sup> = 104.08 m <sup>2</sup>
TERRACE AREA	1351.95 ft <sup>2</sup> = 125.60 m <sup>2</sup>
<hr/>	
TOTAL AREA	2472.25 ft <sup>2</sup> = 229.68 m <sup>2</sup>

LEVELS: (4<sup>TH</sup>)



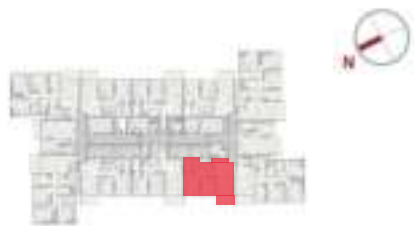
<b>2BR-2A - 1 - (501-1801,2101)</b>		
SUITE AREA	1020.96 ft <sup>2</sup>	= 94.85 m <sup>2</sup>
BALCONY AREA	86.54 ft <sup>2</sup>	= 8.04 m <sup>2</sup>
<hr/>		
TOTAL AREA	1107.50 ft <sup>2</sup>	= 102.89 m <sup>2</sup>

LEVELS: (5<sup>TH</sup> TO 18<sup>TH</sup>, 21<sup>ST</sup>, 22<sup>ND</sup> TO 44<sup>TH</sup>)



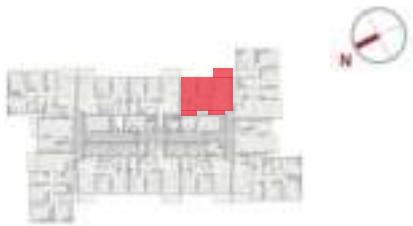
2BR-2A - 1 - (505-1805,2105,2205-4405)		
SUITE AREA	1020.96 ft <sup>2</sup>	= 94.85 m <sup>2</sup>
BALCONY AREA	86.54 ft <sup>2</sup>	= 8.04 m <sup>2</sup>
<hr/>		
TOTAL AREA	1107.50 ft <sup>2</sup>	= 102.89 m <sup>2</sup>

LEVELS: (5<sup>TH</sup> TO 18<sup>TH</sup>, 21<sup>ST</sup>, 22<sup>ND</sup> TO 44<sup>TH</sup>)



<b>2BR-2A - 1 - (508-1808,2108)</b>		
SUITE AREA	1020.96 ft <sup>2</sup>	= 94.85 m <sup>2</sup>
BALCONY AREA	86.54 ft <sup>2</sup>	= 8.04 m <sup>2</sup>
<hr/>		
TOTAL AREA	1107.50 ft <sup>2</sup>	= 102.89 m <sup>2</sup>

LEVELS: (5<sup>TH</sup> TO 18<sup>TH</sup>, 21<sup>ST</sup>, 22<sup>ND</sup> TO 44<sup>TH</sup>)



2BR-2A - 1 - (512-1812,2112,2212-4412)		
SUITE AREA	1020.96 ft²	= 94.85 m²
BALCONY AREA	86.54 ft²	= 8.04 m²
<hr/>		
TOTAL AREA	1107.50 ft²	= 102.89 m²

LEVELS: (5<sup>TH</sup> TO 18<sup>TH</sup>, 21<sup>ST</sup>, 22<sup>ND</sup> TO 44<sup>TH</sup>)



**2BR-2A - 2 - 401**

SUITE AREA	1020.96 ft <sup>2</sup> = 94.85 m <sup>2</sup>
TERRACE AREA	356.07 ft <sup>2</sup> = 33.08 m <sup>2</sup>
<hr/>	
TOTAL AREA	1377.03 ft <sup>2</sup> = 127.93 m <sup>2</sup>

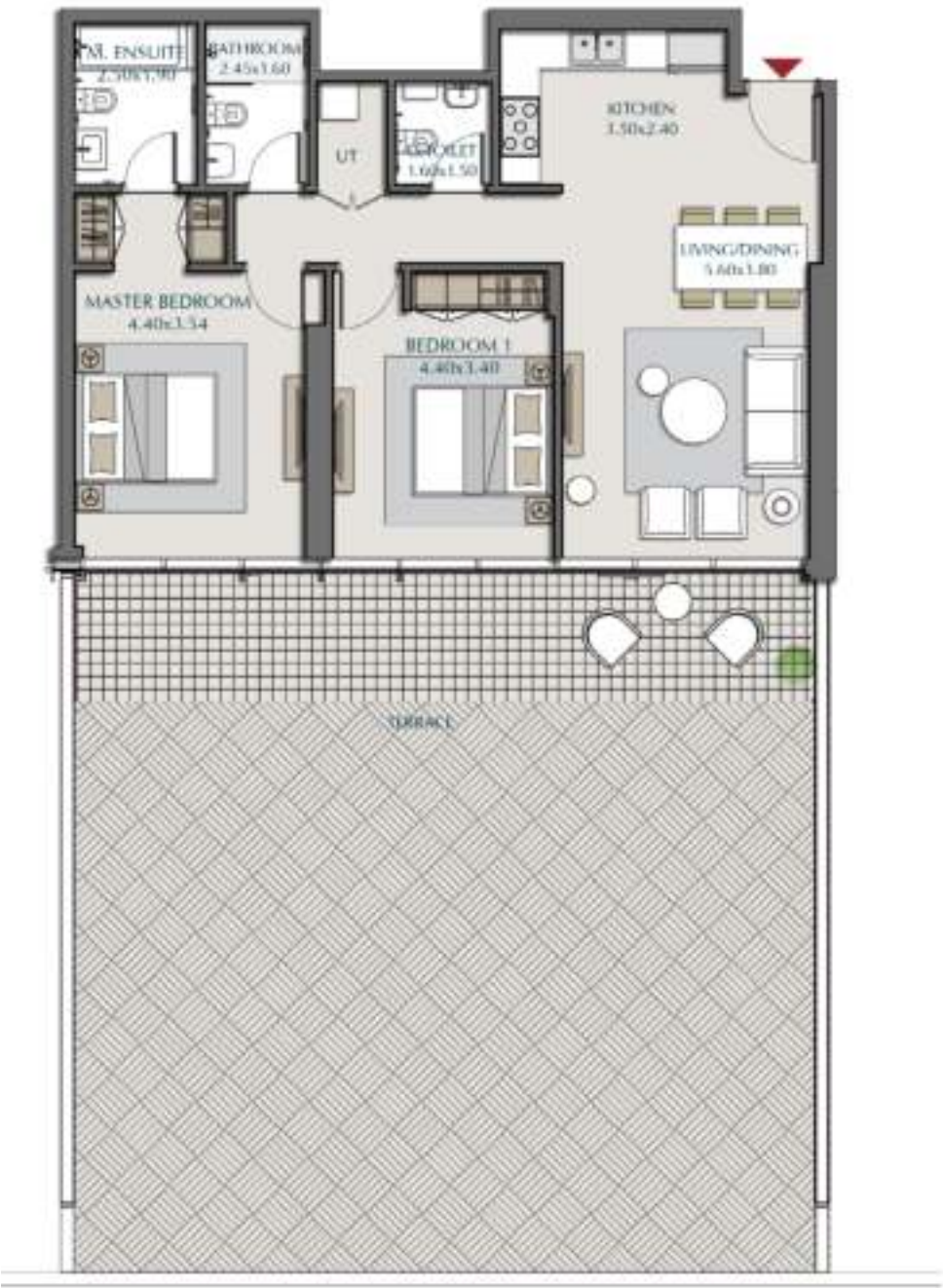
LEVELS: (4<sup>TH</sup>)



**2BR-2A - 3 - 405**

SUITE AREA	1020.63 ft <sup>2</sup> = 94.82 m <sup>2</sup>
TERRACE AREA	1273.59 ft <sup>2</sup> = 118.32 m <sup>2</sup>
<hr/>	
TOTAL AREA	2294.22 ft <sup>2</sup> = 213.14 m <sup>2</sup>

LEVELS: (4<sup>TH</sup>)



**2BR-2A - 4 - 408**

SUITE AREA	1020.53 ft <sup>2</sup> = 94.81 m <sup>2</sup>
TERRACE AREA	1351.95 ft <sup>2</sup> = 125.60 m <sup>2</sup>
<hr/>	
TOTAL AREA	2372.47 ft <sup>2</sup> = 220.41 m <sup>2</sup>

LEVELS: (4<sup>TH</sup>)



**2BR-2B - ( 2101, 2201, 2201-4401)**

SUITE AREA	994.15 ft <sup>2</sup> = 92.36 m <sup>2</sup>
BALCONY AREA	165.98 ft <sup>2</sup> = 15.42 m <sup>2</sup>
<hr/>	
TOTAL AREA	1160.13 ft <sup>2</sup> = 107.78 m <sup>2</sup>

LEVELS: (21<sup>ST</sup> , 22<sup>ND</sup> TO 44<sup>TH</sup>)



<b>2BR-2B - ( 2108, 2208, 2208-4408)</b>		
SUITE AREA	994.15 ft <sup>2</sup>	= 92.36 m <sup>2</sup>
BALCONY AREA	165.98 ft <sup>2</sup>	= 15.42 m <sup>2</sup>
<hr/>		
TOTAL AREA	1160.13 ft <sup>2</sup>	= 107.78 m <sup>2</sup>

LEVELS: (21<sup>ST</sup> , 22<sup>ND</sup> TO 44<sup>TH</sup>)

PARK VIEWS RESIDENCES B - 2BR-D1 (U)



2BR-D1 (U)- 2103	
SUITE AREA	652.61 ft <sup>2</sup> = 60.63 m <sup>2</sup>
BALCONY AREA	65.23 ft <sup>2</sup> = 6.06 m <sup>2</sup>
<hr/>	
TOTAL AREA	717.84 ft <sup>2</sup> = 66.69 m <sup>2</sup>

LEVELS: (21<sup>ST</sup>)

"All room dimensions are in metric and measured to structural elements and exclude wall finishes and construction tolerances. All materials, dimensions & drawings features and amenities are approximate at the time of printing, Information subject to change without notice. Actual suite areas may vary from the stated area. Drawings are not to scale E&EO. The developer reserves the right to make revisions."



**2BR-D1 (U)- 2110**

SUITE AREA	652.61 ft <sup>2</sup> = 60.63 m <sup>2</sup>
BALCONY AREA	65.23 ft <sup>2</sup> = 6.06 m <sup>2</sup>
<hr/>	
TOTAL AREA	717.84 ft <sup>2</sup> = 66.69 m <sup>2</sup>

LEVELS: (21<sup>ST</sup>)



**2BR-D1 (L) - 2003**

SUITE AREA      652.61 ft<sup>2</sup> = 60.63 m<sup>2</sup>

TOTAL AREA      652.61 ft<sup>2</sup> = 60.63 m<sup>2</sup>

LEVELS: (20<sup>TH</sup>)



**2BR-D1 (L) - 2010**

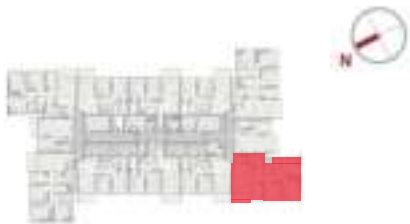
SUITE AREA	652.61 ft <sup>2</sup> = 60.63 m <sup>2</sup>
<hr/>	
TOTAL AREA	652.61 ft <sup>2</sup> = 60.63 m <sup>2</sup>

LEVELS: (20<sup>TH</sup>)



<b>3BR-1A - 1 - (502-1802,2102,2202-4402)</b>		
SUITE AREA	1538.38 ft <sup>2</sup>	= 142.92 m <sup>2</sup>
BALCONY AREA	93.54 ft <sup>2</sup>	= 8.69 m <sup>2</sup>
<hr/>		
TOTAL AREA	1631.92 ft <sup>2</sup>	= 151.61 m <sup>2</sup>

LEVELS: (5<sup>TH</sup> TO 18<sup>TH</sup>, 21<sup>ST</sup>, 22<sup>ND</sup> TO 44<sup>TH</sup>)



**3BR-1A - 1 - (509-1809,2109,2209-4409)**

SUITE AREA	1538.38 ft <sup>2</sup> = 142.92 m <sup>2</sup>
BALCONY AREA	93.54 ft <sup>2</sup> = 8.69 m <sup>2</sup>
<hr/>	
TOTAL AREA	1631.92 ft <sup>2</sup> = 151.61 m <sup>2</sup>

LEVELS: (5<sup>TH</sup> TO 18<sup>TH</sup>, 21<sup>ST</sup>, 22<sup>ND</sup> TO 44<sup>TH</sup>)



**3BR-1A - 2 - 402**

SUITE AREA	1538.38 ft <sup>2</sup> = 142.92 m <sup>2</sup>
TERRACE AREA	295.47 ft <sup>2</sup> = 27.45 m <sup>2</sup>
<hr/>	
TOTAL AREA	1833.85ft <sup>2</sup> = 170.37 m <sup>2</sup>

LEVELS: (4<sup>TH</sup>)



**3BR-1A - 3 - 409**

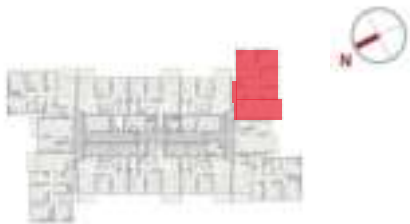
SUITE AREA	1536.87 ft <sup>2</sup> = 142.78 m <sup>2</sup>
TERRACE AREA	1677.02 ft <sup>2</sup> = 155.80 m <sup>2</sup>
<hr/>	
TOTAL AREA	3213.89 ft <sup>2</sup> = 298.58 m <sup>2</sup>

LEVELS: (4<sup>TH</sup>)



3BR-1B - 1 (504-1804,2104,2204-4404)	
SUITE AREA	1551.19 ft <sup>2</sup> = 144.11 m <sup>2</sup>
BALCONY AREA	96.23 ft <sup>2</sup> = 8.94 m <sup>2</sup>
<hr/>	
TOTAL AREA	1647.42 ft <sup>2</sup> = 153.05 m <sup>2</sup>

LEVELS: (5<sup>TH</sup> TO 18<sup>TH</sup>, 21<sup>ST</sup>, 22<sup>ND</sup> TO 44<sup>TH</sup>)



<b>3BR-1B - 1 (511-1811,2111,2211-4411)</b>	
SUITE AREA	1551.19 ft <sup>2</sup> = 144.11 m <sup>2</sup>
BALCONY AREA	96.23 ft <sup>2</sup> = 8.94 m <sup>2</sup>
<hr/>	
TOTAL AREA	1647.42 ft <sup>2</sup> = 153.05 m <sup>2</sup>

LEVELS: (5<sup>TH</sup> TO 18<sup>TH</sup>, 21<sup>ST</sup>, 22<sup>ND</sup> TO 44<sup>TH</sup>)



3BR-1B - 2 - 404		
SUITE AREA	1551.19 ft <sup>2</sup>	= 144.11 m <sup>2</sup>
TERRACE AREA	1450.01 ft <sup>2</sup>	= 134.71 m <sup>2</sup>
<hr/>		
TOTAL AREA	3001.19 ft <sup>2</sup>	= 278.82 m <sup>2</sup>

LEVELS: (4<sup>TH</sup>)



# TANAMI

PROPERTIES

## CONTACT US



+971 4 248 3400 |



+971 55 162 3236

## Email Us

info@tanamiproperties.ae

For More Info...

[www.tanamiproperties.com/Projects/Park-Views-Residences](http://www.tanamiproperties.com/Projects/Park-Views-Residences)



## ADDRESS

Office 3405, Marina Plaza,  
Al Marsa Street, Dubai Marina, UAE