



**MUDON**  
AL RANIM

**DUBAI**  
PROPERTIES







## FLOOR PLANS

3-BEDROOM TOWNHOUSE-TYPE 3B1



GROUND LEVEL

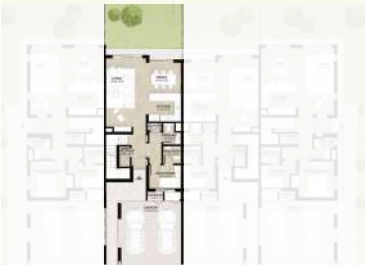


FIRST LEVEL

3-BEDROOM+MAID - MID UNIT

TOTAL AREA: 206 SQM / 2,217 SQFT

03 BEDROOMS 02 BATHROOMS



3-BEDROOM TOWNHOUSE-TYPE 3B1(M)



GROUND LEVEL



FIRST LEVEL

3-BEDROOM+MAID - MID UNIT (MIRRORED)

TOTAL AREA: 206 SQM / 2,217 SQFT

03 BEDROOMS 02 BATHROOMS



Note: Plan and details included are indicative only and are subject to change by the Master Developer/Seller at its sole discretion without notice and/or liability. All images, including features, finishes, furnishings and scale are illustrative only. Final areas, dimensions, layout and materials may differ from those stated, and the layout may be mirrored. The plot area shown is illustrative only and the actual plot area may vary depending on the plot location in the Master Community as selected by the purchaser.

Note: Plan and details included are indicative only and are subject to change by the Master Developer/Seller at its sole discretion without notice and/or liability. All images, including features, finishes, furnishings and scale are illustrative only. Final areas, dimensions, layout and materials may differ from those stated, and the layout may be mirrored. The plot area shown is illustrative only and the actual plot area may vary depending on the plot location in the Master Community as selected by the purchaser.



3-BEDROOM + FAMILY TOWNHOUSE-TYPE 3B2



3-BEDROOM+FAMILY & MAID - MID UNIT

TOTAL AREA: 238.55 SQM / 2,568 SQFT

03 BEDROOMS  
02 BATHROOMS



3-BEDROOM + FAMILY TOWNHOUSE-TYPE 3B2(M)



3-BEDROOM+FAMILY & MAID - MID UNIT (MIRRORED)

TOTAL AREA: 238.55 SQM / 2,568 SQFT

03 BEDROOMS  
02 BATHROOMS



Note: Plan and details included are indicative only and are subject to change by the Master Developer/Seller at its sole discretion without notice and/or liability. All images, including features, finishes, furnishings and scale are illustrative only. Final areas, dimensions, layout and materials may differ from those stated, and the layout may be mirrored. The plot area shown is illustrative only and the actual plot area may vary depending on the plot location in the Master Community as selected by the purchaser.

Note: Plan and details included are indicative only and are subject to change by the Master Developer/Seller at its sole discretion without notice and/or liability. All images, including features, finishes, furnishings and scale are illustrative only. Final areas, dimensions, layout and materials may differ from those stated, and the layout may be mirrored. The plot area shown is illustrative only and the actual plot area may vary depending on the plot location in the Master Community as selected by the purchaser.



4-BEDROOM TOWNHOUSE-TYPE 4B1



GROUND LEVEL

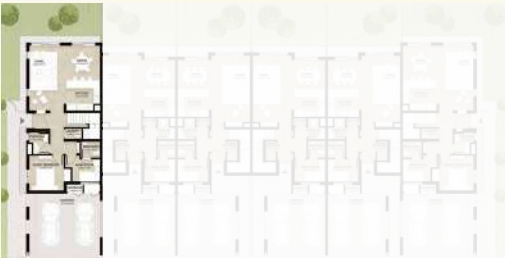


FIRST LEVEL

4-BEDROOM+MAID - END UNIT

TOTAL AREA: 236.78 SQM / 2,549 SQFT

04 BEDROOMS  
03 BATHROOMS



4-BEDROOM TOWNHOUSE-TYPE 4B1(M)



GROUND LEVEL

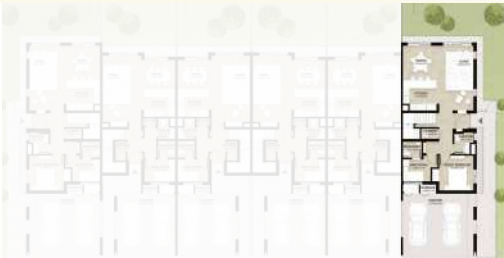


FIRST LEVEL

4-BEDROOM+MAID - END UNIT (MIRRORED)

TOTAL AREA: 236.78 SQM / 2,549 SQFT

04 BEDROOMS  
03 BATHROOMS



Note: Plan and details included are indicative only and are subject to change by the Master Developer/Seller at its sole discretion without notice and/or liability. All images, including features, finishes, furnishings and scale are illustrative only. Final areas, dimensions, layout and materials may differ from those stated, and the layout may be mirrored. The plot area shown is illustrative only and the actual plot area may vary depending on the plot location in the Master Community as selected by the purchaser.

Note: Plan and details included are indicative only and are subject to change by the Master Developer/Seller at its sole discretion without notice and/or liability. All images, including features, finishes, furnishings and scale are illustrative only. Final areas, dimensions, layout and materials may differ from those stated, and the layout may be mirrored. The plot area shown is illustrative only and the actual plot area may vary depending on the plot location in the Master Community as selected by the purchaser.



4-BEDROOM + FAMILY TOWNHOUSE-TYPE 4B2



4-BEDROOM+FAMILY & MAID - END UNIT

TOTAL AREA: 276.70 SQM / 2,978 SQFT

04 BEDROOMS

03 BATHROOMS



4-BEDROOM + FAMILY TOWNHOUSE-TYPE 4B2(M)



4-BEDROOM+FAMILY & MAID - END UNIT

(MIRRORED)

TOTAL AREA: 276.70 SQM / 2,978 SQFT

04 BEDROOMS

03 BATHROOMS



Note: Plan and details included are indicative only and are subject to change by the Master Developer/Seller at its sole discretion without notice and/or liability. All images, including features, finishes, furnishings and scale are illustrative only. Final areas, dimensions, layout and materials may differ from those stated, and the layout may be mirrored. The plot area shown is illustrative only and the actual plot area may vary depending on the plot location in the Master Community as selected by the purchaser.

Note: Plan and details included are indicative only and are subject to change by the Master Developer/Seller at its sole discretion without notice and/or liability. All images, including features, finishes, furnishings and scale are illustrative only. Final areas, dimensions, layout and materials may differ from those stated, and the layout may be mirrored. The plot area shown is illustrative only and the actual plot area may vary depending on the plot location in the Master Community as selected by the purchaser.



Note: Plan And Details Included Are Indicative Only And Are Subject To Change By The Master Developer/Seller At Its Sole Discretion Without Notice And/Or Liability. All Images, Including Features, Finishes, Furnishings And Scale Are Illustrative Only. Final Areas, Dimensions, Layout And Materials May Differ From Those Stated, And The Layout May Be Mirrored. The Plot Area Shown Is Illustrative Only And The Actual Plot Area May Vary Depending On The Plot Location In The Master Community As Selected By The Purchaser.







# TANAMI

PROPERTIES

*Contact Us*

☎ +971 4 248 3400, 📞 +971 55 162 3236

✉ info@tanamiproperties.ae

*For More Info...*

[www.tanamiproperties.com/Projects/Mudon-Al-Ranim](http://www.tanamiproperties.com/Projects/Mudon-Al-Ranim)



3405, Marina Plaza, Al Marsa Street, Dubai Marina, UAE