

WAVES  
GRANDE



SOBHA HARTLAND



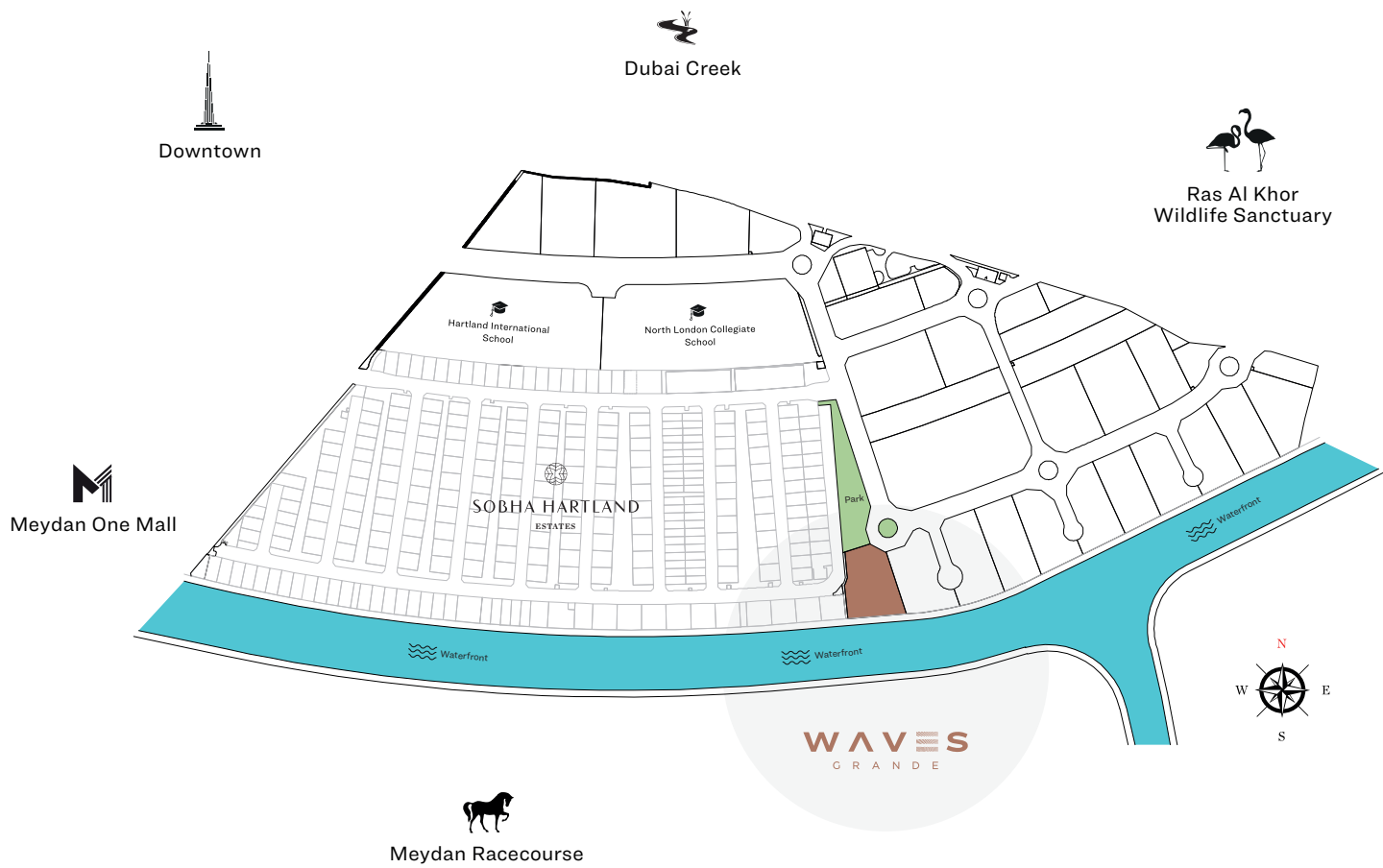
W A T E R  
F R O N T  
*Residences*



## FLOOR PLANS



# LOCATION IN THE MASTER PLAN



## APARTMENT FEATURES



Views from every home



Covered car parking

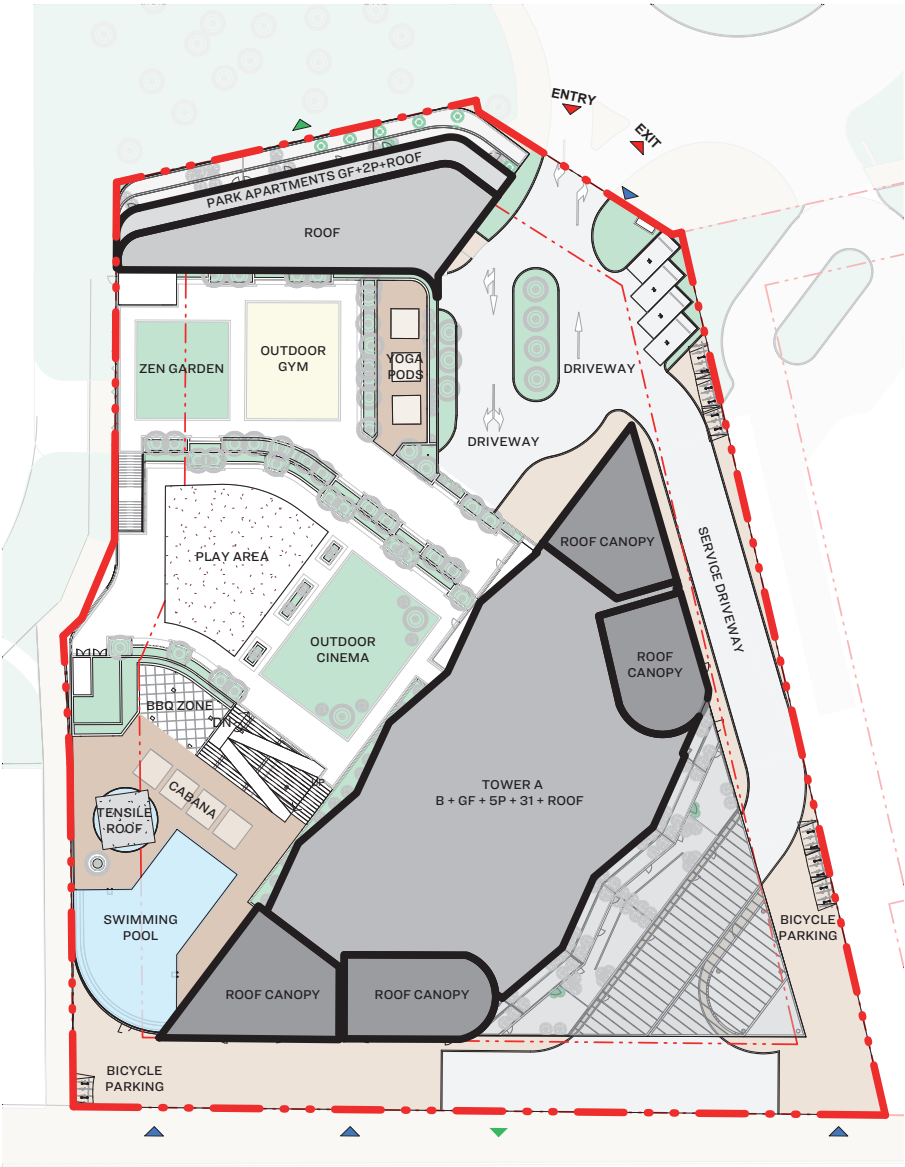


Fully fitted kitchens

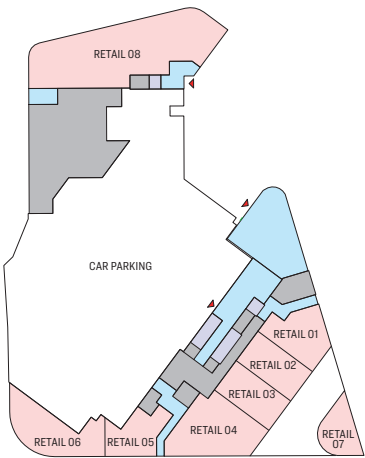
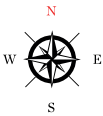


Bedroom wardrobe in all units

SITE PLAN

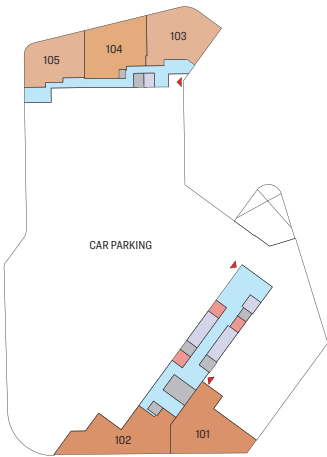


FLOOR PLAN LAYOUT

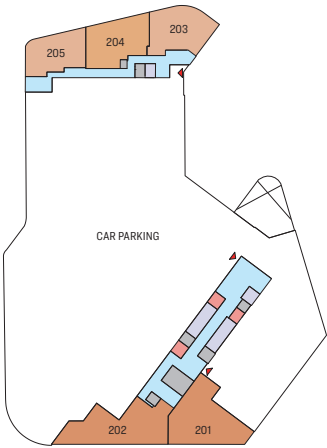


GROUND LEVEL

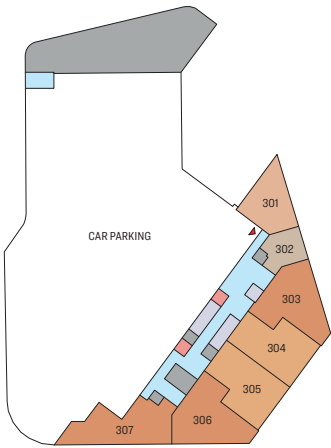
- 1 BED UNIT
- 1.5 BED UNIT
- 2 BED UNIT
- 2.5 BED UNIT
- 3 BED UNIT
- 4 BED UNIT
- COMMERCIAL
- LOBBIES, CORRIDORS & STAIRS
- LIFTS
- SERVICES
- AMENITIES
- SWIMMING POOL
- LANDSCAPE



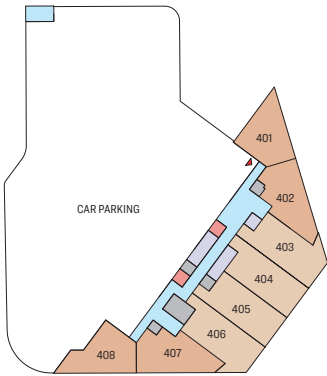
LEVEL 01 (PODIUM 01)



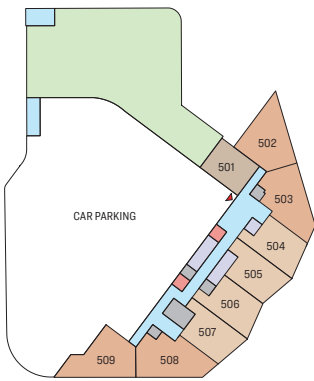
LEVEL 02 (PODIUM 02)



LEVEL 03 (PODIUM 03)



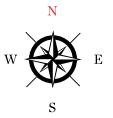
LEVEL 04 (PODIUM 04)



LEVEL 05 (PODIUM 05)



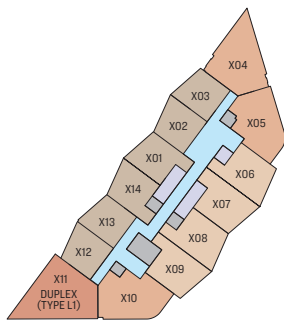
LEVEL 06



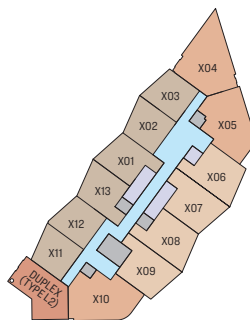
- 1 BED UNIT
- 1.5 BED UNIT
- 2 BED UNIT
- 2.5 BED UNIT
- 3 BED UNIT
- 4 BED UNIT
- LOBBIES, CORRIDORS & STAIRS
- LIFTS
- SERVICES



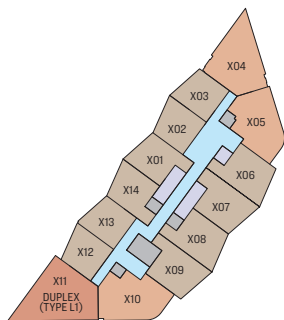
LEVEL 07, 08 & 09



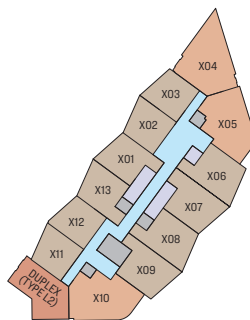
LEVEL 10, 12, 14, 16, 18, 20, 22, 24  
TYPICAL FLOOR PLAN



LEVEL 11, 13, 15, 17, 19, 21, 23, 25  
TYPICAL FLOOR PLAN



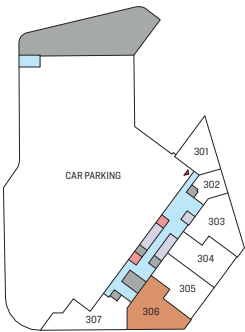
LEVEL 26, 28, 30, 32, 34  
TYPICAL FLOOR PLAN



LEVEL 27, 29, 31, 33, 35  
TYPICAL FLOOR PLAN

3 BEDROOM APARTMENT  
TYPE A (with balcony)

**TOTAL SALEABLE AREA**  
SUITE = 1,639.77 SQ.FT.  
BALCONY = 303.43 SQ.FT.  
TOTAL = 1,943.21 SQ.FT.



LEVEL 03 (PODIUM 03)



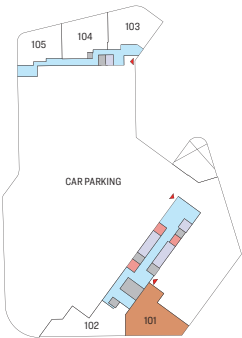
Disclaimer: 1. All dimensions are in metric, measured to wall finishes. 2. All materials, dimensions & drawings are approximate. 3. Information is subject to change without notice, at developer's absolute discretion. 4. Actual area may vary from the stated area. 5. Drawing are not to scale. 6. All images used are for illustrative purpose only and do not represent the actual size, features, specifications, fittings and furnishings. The views shown vary by floor. 7. The developer reserves the right to make revisions/ alterations, at its absolute discretion, without any liability whatsoever.

# 3 BEDROOM APARTMENT

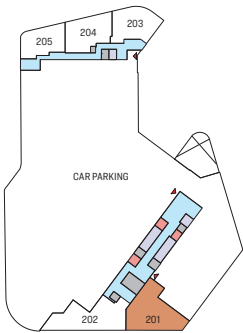
## TYPE A VARIANT (with balcony)

### TOTAL SALEABLE AREA

SUITE = 1,602.96 SQ.FT. to 1,604.68 SQ.FT.  
 BALCONY = 300.64 SQ.FT. to 302.57 SQ.FT.  
 TOTAL = 1,905.32 SQ.FT. to 1,905.53 SQ.FT.



LEVEL 01 (PODIUM 01)



LEVEL 02 (PODIUM 02)

UNIT



  
 Waterfront

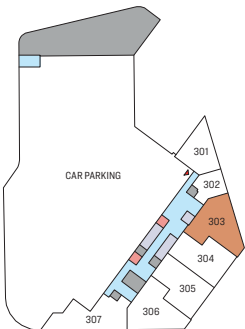
Disclaimer: 1. All dimensions are in metric, measured to wall finishes. 2. All materials, dimensions & drawings are approximate. 3. Information is subject to change without notice, at developer's absolute discretion. 4. Actual area may vary from the stated area. 5. Drawing are not to scale. 6. All images used are for illustrative purpose only and do not represent the actual size, features, specifications, fittings and furnishings. The views shown vary by floor. 7. The developer reserves the right to make revisions/ alterations, at its absolute discretion, without any liability whatsoever.

# 3 BEDROOM APARTMENT

TYPE A1 (with balcony)

## TOTAL SALEABLE AREA

SUITE = 1,620.72 SQ.FT.  
BALCONY = 303.33 SQ.FT.  
TOTAL = 1,924.05 SQ.FT.



LEVEL 03 (PODIUM 03)

UNIT



Waterfront

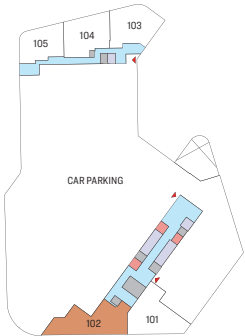
Disclaimer: 1. All dimensions are in metric, measured to wall finishes. 2. All materials, dimensions & drawings are approximate. 3. Information is subject to change without notice, at developer's absolute discretion. 4. Actual area may vary from the stated area. 5. Drawing are not to scale. 6. All images used are for illustrative purpose only and do not represent the actual size, features, specifications, fittings and furnishings. The views shown vary by floor. 7. The developer reserves the right to make revisions/ alterations, at its absolute discretion, without any liability whatsoever.

# 3 BEDROOM APARTMENT

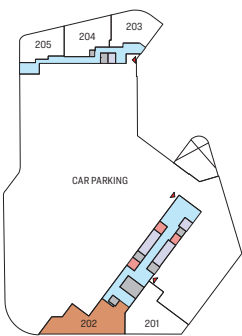
TYPE B (with balcony)

## TOTAL SALEABLE AREA

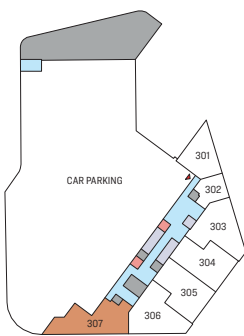
SUITE = 1,641.71 SQ.FT. to 1,648.39 SQ.FT.  
BALCONY = 309.57 SQ.FT. to 311.72 SQ.FT.  
TOTAL = 1,953.43 SQ.FT. to 1,957.96 SQ.FT.



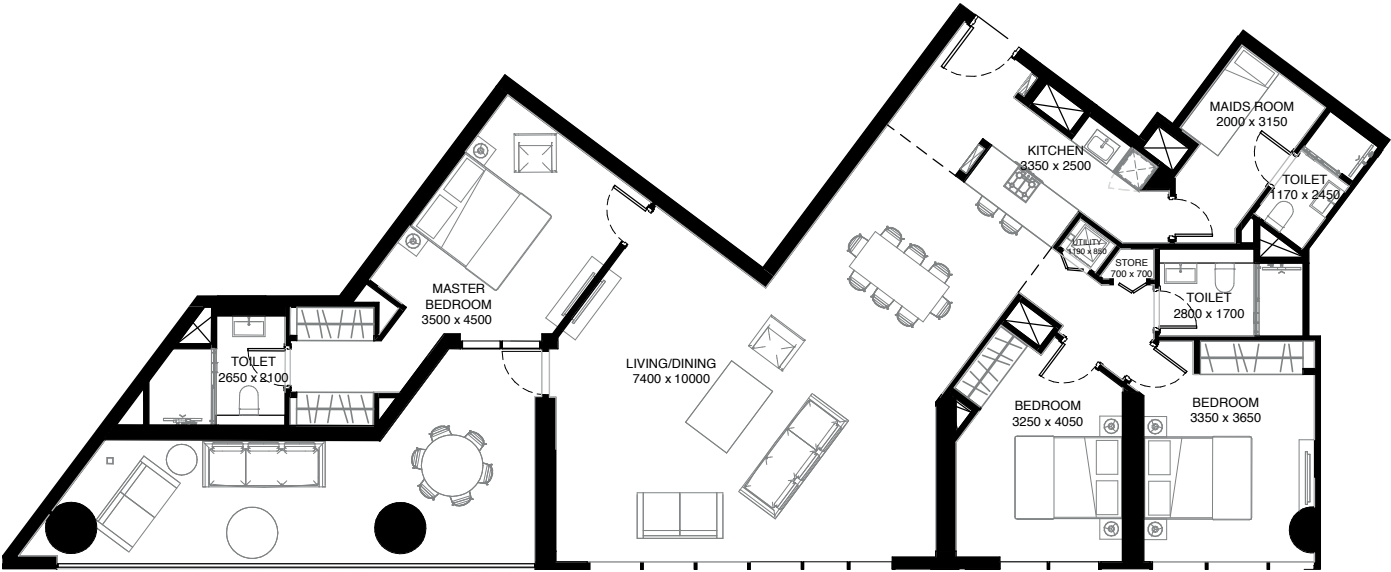
LEVEL 01 (PODIUM 01)



LEVEL 02 (PODIUM 02)



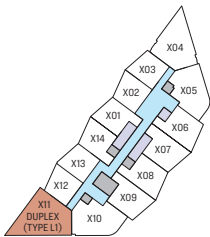
LEVEL 03 (PODIUM 03)



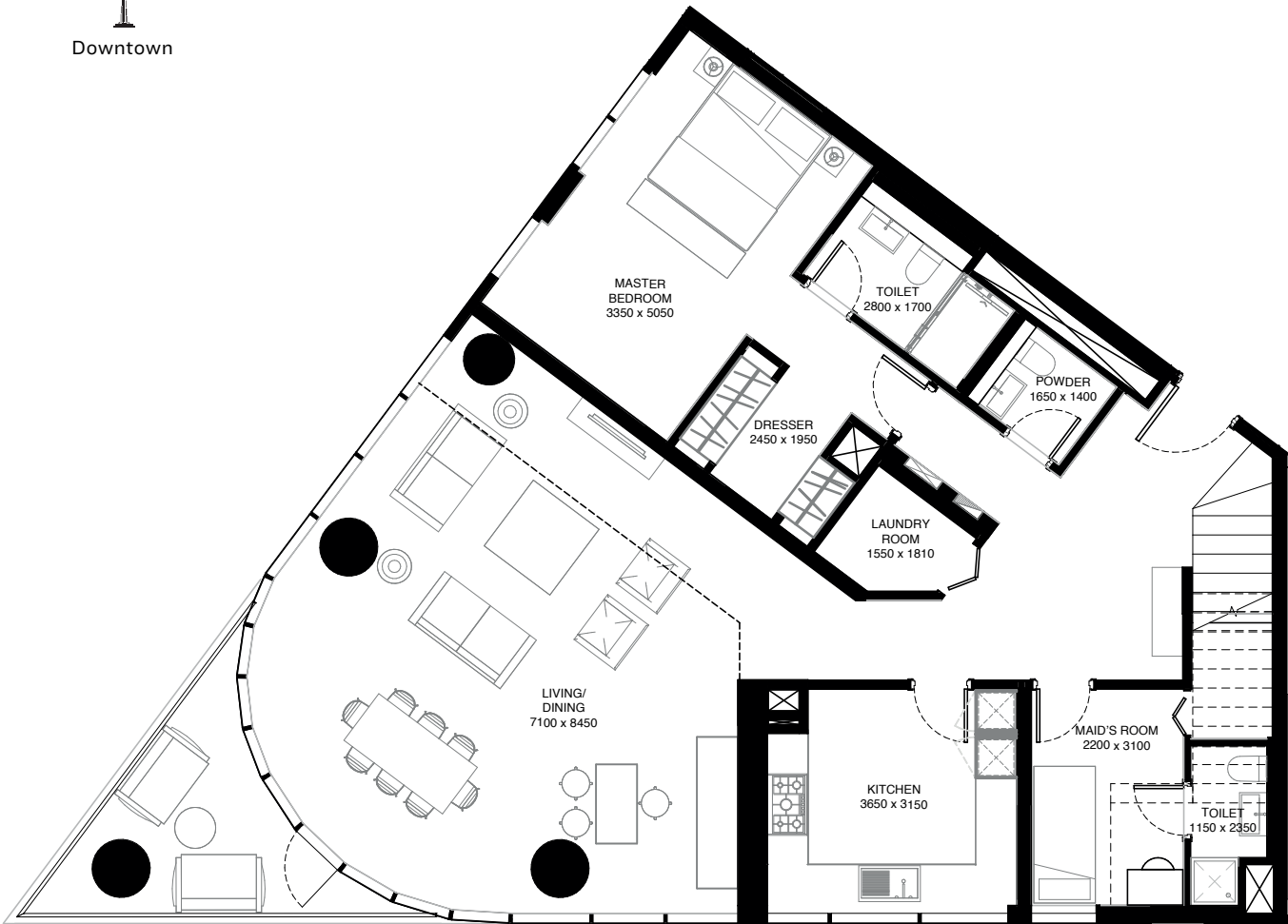
Disclaimer: 1. All dimensions are in metric, measured to wall finishes. 2. All materials, dimensions & drawings are approximate. 3. Information is subject to change without notice, at developer's absolute discretion. 4. Actual area may vary from the stated area. 5. Drawing are not to scale. 6. All images used are for illustrative purpose only and do not represent the actual size, features, specifications, fittings and furnishings. The views shown vary by floor. 7. The developer reserves the right to make revisions/ alterations, at its absolute discretion, without any liability whatsoever.

4 BEDROOM DUPLEX  
(with balcony)

**TOTAL SALEABLE AREA**  
SUITE = 2,549.76 SQ.FT. to 2,552.02 SQ.FT.  
BALCONY = 102.04 SQ.FT.  
TOTAL = 2,651.80 SQ.FT. to 2,654.06 SQ.FT.



LEVEL 10, 12, 14, 16, 18, 20, 22, 24, 26, 28, 30, 32, 34  
TYPICAL FLOOR PLAN



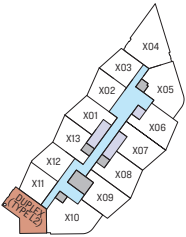
LOWER FLOOR



Disclaimer: 1. All dimensions are in metric, measured to wall finishes. 2. All materials, dimensions & drawings are approximate. 3. Information is subject to change without notice, at developer's absolute discretion. 4. Actual area may vary from the stated area. 5. Drawing are not to scale. 6. All images used are for illustrative purpose only and do not represent the actual size, features, specifications, fittings and furnishings. The views shown vary by floor. 7. The developer reserves the right to make revisions/ alterations, at its absolute discretion, without any liability whatsoever.

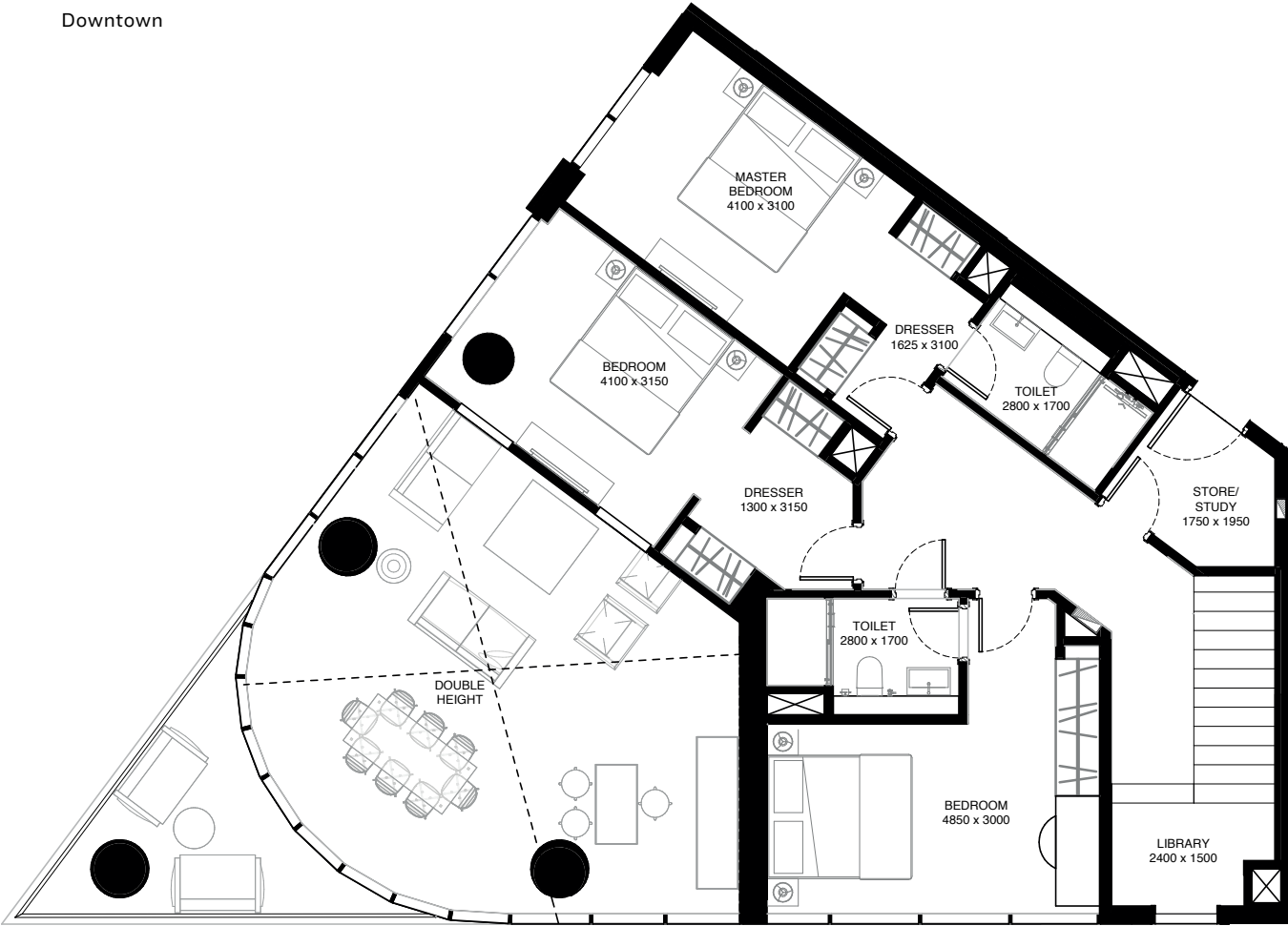
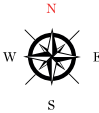
# 4 BEDROOM DUPLEX

(with balcony)



LEVEL 11, 13, 15, 17, 19, 21, 23, 25, 27, 29, 31, 33, 35  
TYPICAL FLOOR PLAN

UNIT



UPPER FLOOR



Disclaimer: 1. All dimensions are in metric, measured to wall finishes. 2. All materials, dimensions & drawings are approximate. 3. Information is subject to change without notice, at developer's absolute discretion. 4. Actual area may vary from the stated area. 5. Drawing are not to scale. 6. All images used are for illustrative purpose only and do not represent the actual size, features, specifications, fittings and furnishings. The views shown vary by floor. 7. The developer reserves the right to make revisions/ alterations, at its absolute discretion, without any liability whatsoever.



**TANAMI**  
P R O P E R T I E S

## CONTACT US

 +971 4 248 3400 |  +971 55 162 3236

## Email Us

info@tanamiproperties.ae

For More Info...

[www.tanamiproperties.com/Projects/Waves-Grande](http://www.tanamiproperties.com/Projects/Waves-Grande)



## ADDRESS

Office 3405, Marina Plaza,  
Al Marsa Street, Dubai Marina, UAE

SOBHA  
REALTY