



ART BAY

PROJECT BRIEF

EAST  
GROUND FLOOR  
AMENITIES PLAN

- 1 ACCESS TO PARKING LEVELS
- 2 EV CHARGING STATION
- 3 PARKING FOR PEOPLE OF DETERMINATION
- 4 BICYCLE PARKING
- 5 LIFT LOBBY
- 6 ACCESS TO PROMENADE



## EAST FIRST FLOOR AMENITIES PLAN

- ① ACCESS TO PARKING LEVELS
- ② ACCESS TO GROUND FLOOR PARKING
- ③ EV CHARGING STATION
- ④ PARKING FOR PEOPLE OF DETERMINATION
- ⑤ BICYCLE PARKING
- ⑥ LIFT LOBBY





WEST  
GROUND FLOOR  
AMENITIES PLAN

- 1 ACCESS TO PARKING LEVELS
- 2 EV CHARGING STATION
- 3 PARKING FOR PEOPLE OF DETERMINATION
- 4 BICYCLE PARKING
- 5 LIFT LOBBY
- 6 ACCESS TO PROMENADE



WEST  
FIRST FLOOR  
AMENITIES PLAN

- ① ACCESS TO PARKING LEVELS
- ② ACCESS TO GROUND FLOOR PARKING
- ③ EV CHARGING STATION
- ④ PARKING FOR PEOPLE OF DETERMINATION
- ⑤ BICYCLE PARKING
- ⑥ LIFT LOBBY
- ⑦ ACCESS TO PROMENADE





HOT YOGA  
STUDIO





CHANGE  
ROOM







ELLINGTON VILLAGE  
WORK STATION  
PLAY AREA

YOUTH  
HUB





POOL  
DECK





THE  
COURTYARD



EAST  
SECOND FLOOR  
AMENITIES PLAN

- |   |                             |
|---|-----------------------------|
| 1 LEISURE AND LOUNGE POOL               | 12 FEMALE WELLNESS CORNER   |
| 2 BAJA SHELF                            | 13 MALE WELLNESS CORNER     |
| 3 SUN LOUNGERS AREA                     | 14 YOUTH HUB                |
| 4 KIDS POOL                             | 15 LIFT LOBBY               |
| 5 BARBEQUE DECK                         | 16 LOBBY LOUNGE             |
| 6 CULTURE LOUNGE                        | 17 LOBBY RECEPTION          |
| 7 PANTRY/DINING                         | 18 LOBBY ENTRANCE           |
| 8 THE THEATRE                           | 19 MAIN ENTRANCE            |
| 9 FITNESS STUDIO                        | 20 MOVE-IN TRUCK ZONE       |
| 10 HOT YOGA STUDIO                      | 21 VEHICLE ENTRANCE/EXIT    |
| 11 BATHROOM FOR PEOPLE OF DETERMINATION | 22 ACCESS TO PARKING LEVELS |





WEST  
SECOND FLOOR  
AMENITIES PLAN

- 1

LEISURE AND LOUNGE POOL
- 2

BAJA SHELF
- 3

SUN LOUNGERS AREA
- 4

CABANAS
- 5

OUTDOOR SHOWER
- 6

COURTYARD
- 7

KIDS POOL
- 8

BARBEQUE DECK
- 9

OUTDOOR KIDS PLAY AREA
- 10

OUTDOOR TERRACE
- 11

ACCESS TO COURTYARD
- 12

LIFT LOBBY
- 13

CULTURE LOUNGE
- 14

THE THEATRE
- 15

GAMES CORNER
- 16

YOUTH HUB
- 17

MULTIPURPOSE TABLE
- 18

LOBBY LOUNGE
- 19

LOBBY RECEPTION
- 20

LOBBY ENTRANCE
- 21

MAIN ENTRANCE
- 22

FITNESS STUDIO
- 23

HOT YOGA STUDIO
- 24

OUTDOOR FITNESS AREA
- 25

MALE WELLNESS CORNER
- 26

FEMALE WELLNESS CORNER
- 27

PARKING FOR PEOPLE OF DETERMINATION
- 28

SERVICE LIFT
- 29

MOVE-IN TRUCK ZONE
- 30

VEHICLE ENTRANCE/EXIT
- 31

ACCESS TO PARKING LEVELS





EAST  
ART CLUB  
AMENITIES PLAN

- ① ROOFTOP BAR
- ② WORKSHOP CORNER
- ③ OUTDOOR LOUNGE & VIEWING DECK
- ④ SUNKEN SEATING
- ⑤ ARTS & PERFORMANCES STAGE
- ⑥ LIFT LOBBY
- ⑦ WASHROOM



WEST  
ART CLUB  
AMENITIES PLAN

- ① ROOFTOP BAR
- ② WORKSHOP CORNER
- ③ OUTDOOR LOUNGE & VIEWING DECK
- ④ SUNKEN SEATING
- ⑤ ARTS & PERFORMANCES STAGE
- ⑥ LIFT LOBBY
- ⑦ WASHROOM







EAST  
FLOOR PLANS

## 2<sup>ND</sup> FLOOR PLAN

- 1 BEDROOM
- 3 BEDROOM



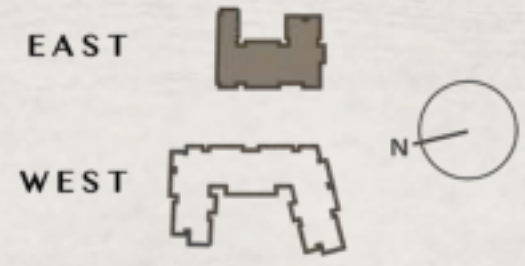


3<sup>RD</sup> - 10<sup>TH</sup>  
FLOOR PLAN

-  STUDIO
-  1 BEDROOM
-  2 BEDROOM
-  3 BEDROOM



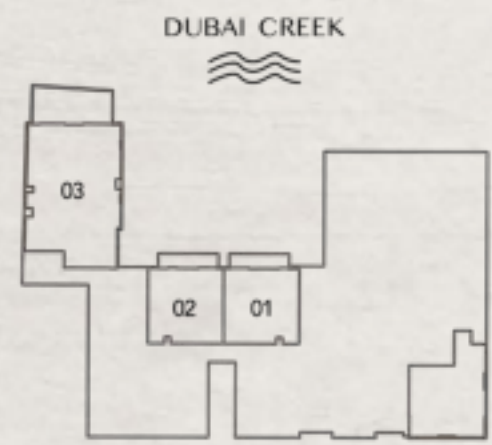
**STUDIO**  
**TYPE A**



---

Internal Living Area	:	379.54 Sq. Ft
Outdoor Living Area	:	50.48 Sq. Ft
Total Living Area	:	430.02 Sq. Ft

**2<sup>nd</sup> Floor:**



**3<sup>rd</sup> - 10<sup>th</sup> Floor:**



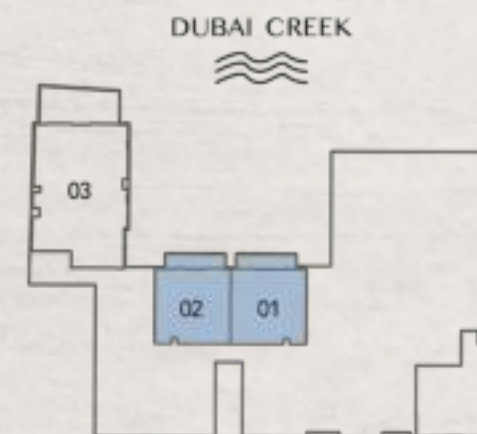


# 1 BEDROOM TYPE A



Internal Living Area : 758.64 Sq. Ft  
Outdoor Living Area : 130.67 Sq. Ft  
Total Living Area : 889.31 Sq. Ft

## 2<sup>nd</sup> Floor:



## 3<sup>rd</sup> - 10<sup>th</sup> Floor:



# 1 BEDROOM TYPE B



Internal Living Area : 857.24 Sq. Ft  
Outdoor Living Area : 102.58 Sq. Ft  
Total Living Area : 959.82 Sq. Ft

## 2<sup>nd</sup> Floor:



## 3<sup>rd</sup> - 10<sup>th</sup> Floor:





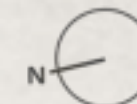
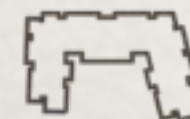
# 1 BEDROOM TYPE C



EAST



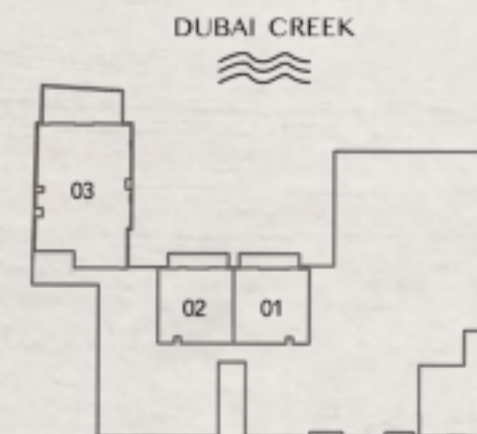
WEST




---

Internal Living Area	:	762.73 Sq. Ft
Outdoor Living Area	:	105.81 Sq. Ft
Total Living Area	:	868.54 Sq. Ft

## 2<sup>nd</sup> Floor:



## 3<sup>rd</sup> - 10<sup>th</sup> Floor:



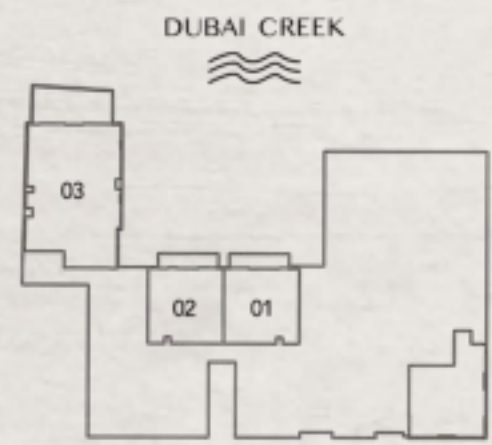


2 BEDROOM  
TYPE A



Internal Living Area	:	1210.19 Sq. Ft
Outdoor Living Area	:	240.36 Sq. Ft
Total Living Area	:	1450.54 Sq. Ft

2<sup>nd</sup> Floor:

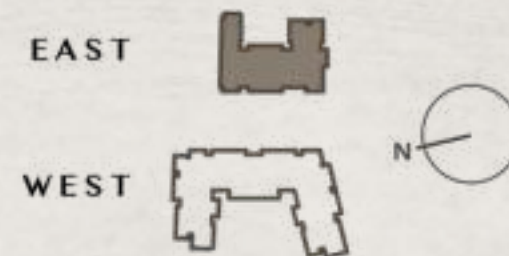


3<sup>rd</sup> - 10<sup>th</sup> Floor:



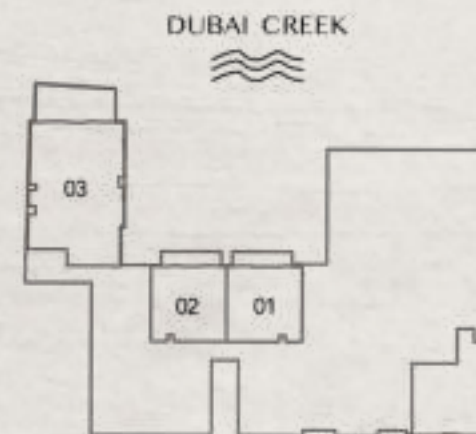


## 2 BEDROOM TYPE B

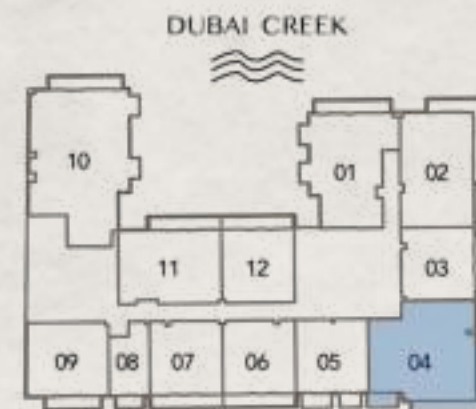


Internal Living Area : 1396.83 Sq. Ft  
Outdoor Living Area : 295.58 Sq. Ft  
Total Living Area : 1692.41 Sq. Ft

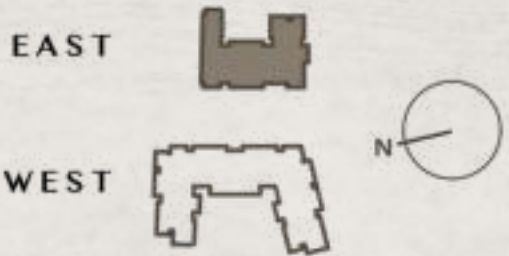
### 2<sup>nd</sup> Floor:



### 3<sup>rd</sup> - 10<sup>th</sup> Floor:

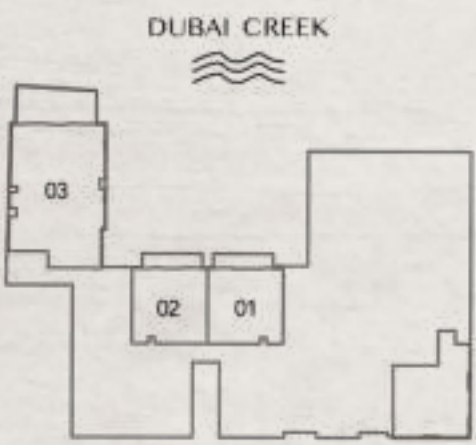


# **2 BEDROOM** **TYPE C**



Internal Living Area	:	1292.53 Sq. Ft
Outdoor Living Area	:	141.01 Sq. Ft
Total Living Area	:	1433.54 Sq. Ft

**2<sup>nd</sup> Floor:**

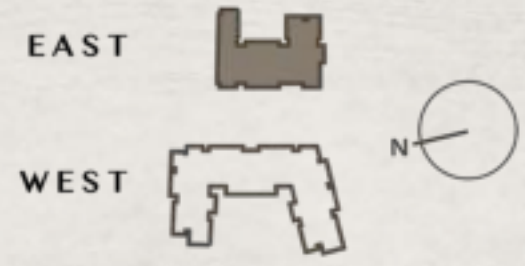


**3<sup>rd</sup> - 10<sup>th</sup> Floor:**



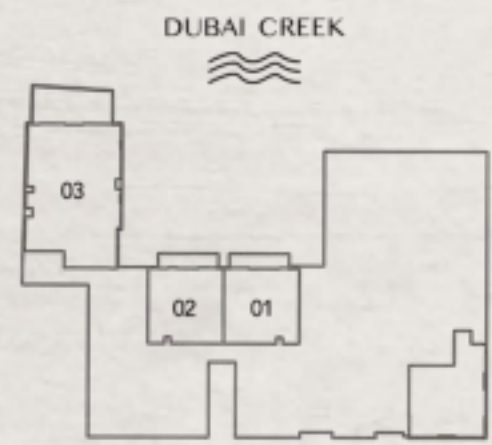


**2 BEDROOM**  
**TYPE D**



Internal Living Area	:	1080.48 Sq. Ft
Outdoor Living Area	:	130.67 Sq. Ft
Total Living Area	:	1211.16 Sq. Ft

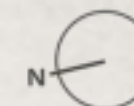


**2<sup>nd</sup> Floor:**



**3<sup>rd</sup> - 10<sup>th</sup> Floor:**



This detailed floor plan illustrates the layout of a three-story townhome. The top floor includes a Balcony, a Living Area, a Dining Area, a Kitchen with a Dishwasher (D/W), a Bedroom, a Bath, and a Glass Box. The middle floor features a Powder Room, a Laundry Room, a Storage area, a Bath, a Primary Bedroom, and another Glass Box. The bottom floor contains a Bedroom and a Bath. A central hallway provides access to all rooms, and a staircase leads to a basement level.

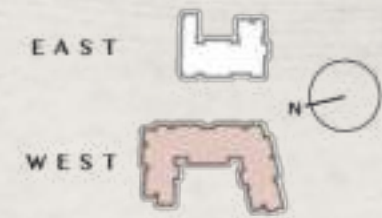


Internal Living Area	:	2011.99 Sq. Ft
Outdoor Living Area	:	135.84 Sq. Ft
Total Living Area	:	2147.83 Sq. Ft



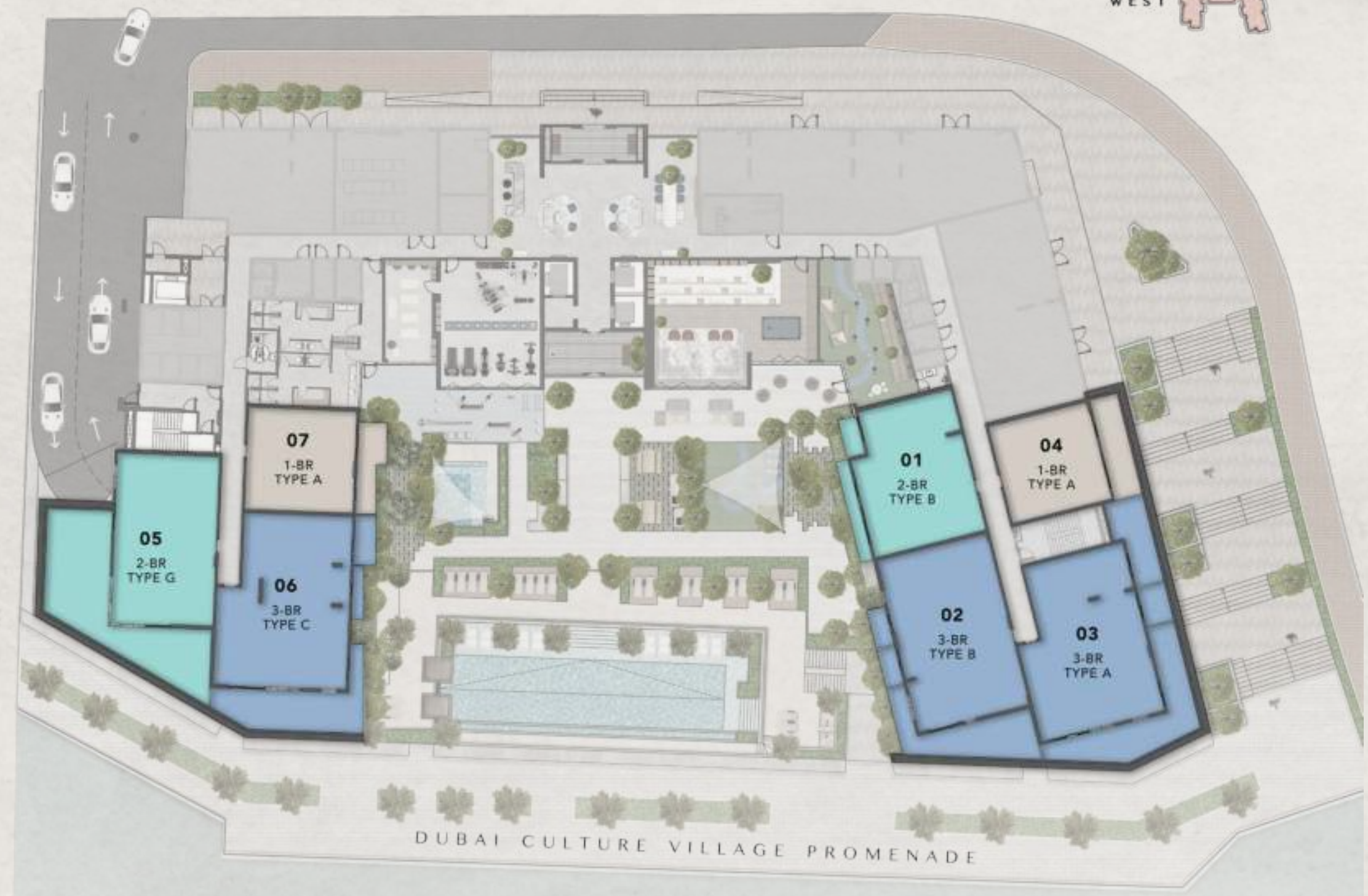


WEST  
FLOOR PLANS

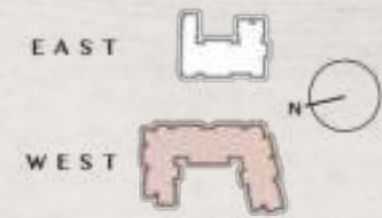


2<sup>ND</sup> FLOOR PLAN

- 1 BEDROOM
- 2 BEDROOM
- 3 BEDROOM







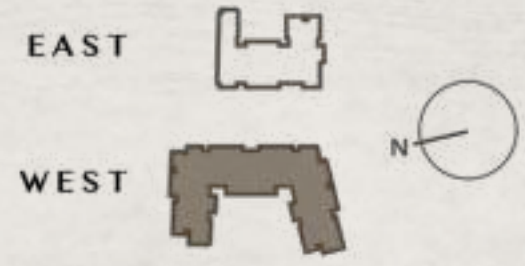
### 3<sup>RD</sup> - 10<sup>TH</sup> FLOOR PLAN

-  STUDIO
-  1 BEDROOM
-  2 BEDROOM
-  3 BEDROOM





**STUDIO**  
**TYPE A**



---

Internal Living Area	:	<b>440.67 Sq. Ft</b>
Outdoor Living Area	:	<b>44.78 Sq. Ft</b>
Total Living Area	:	<b>485.45 Sq. Ft</b>

**2<sup>nd</sup> Floor:**



**3<sup>rd</sup> - 10<sup>th</sup> Floor:**



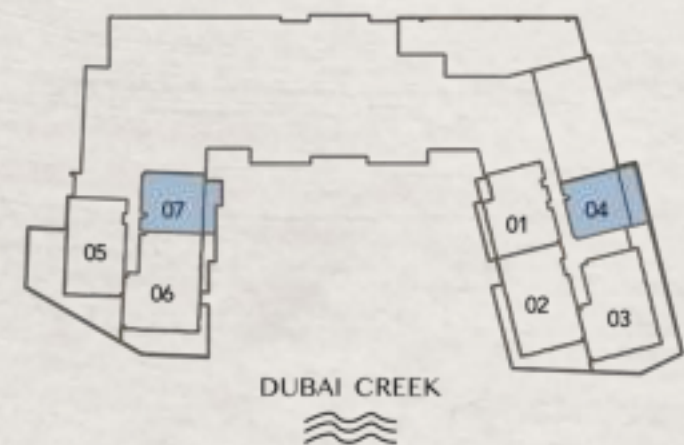


**1 BEDROOM**  
**TYPE A**



Internal Living Area	:	763.27 Sq. Ft
Outdoor Living Area	:	131.32 Sq. Ft
Total Living Area	:	894.59 Sq. Ft

**2<sup>nd</sup> Floor:**



**3<sup>rd</sup> - 10<sup>th</sup> Floor:**



**1 BEDROOM**  
**TYPE B**



Internal Living Area	:	753.80 Sq. Ft
Outdoor Living Area	:	93.54 Sq. Ft
Total Living Area	:	847.34 Sq. Ft

**2<sup>nd</sup> Floor:**



**3<sup>rd</sup> - 10<sup>th</sup> Floor:**





2 BEDROOM  
TYPE A



Internal Living Area	:	1202.76 Sq. Ft
Outdoor Living Area	:	154.79 Sq. Ft
Total Living Area	:	1357.54 Sq. Ft

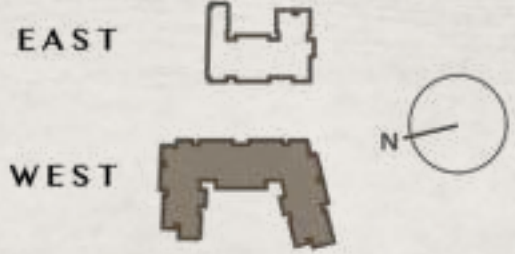
2<sup>nd</sup> Floor:



3<sup>rd</sup> - 10<sup>th</sup> Floor:



# **2 BEDROOM** **TYPE B**



Internal Living Area	:	1152.71 Sq. Ft
Outdoor Living Area	:	180.08 Sq. Ft
Total Living Area	:	1332.79 Sq. Ft

## **2<sup>nd</sup> Floor:**

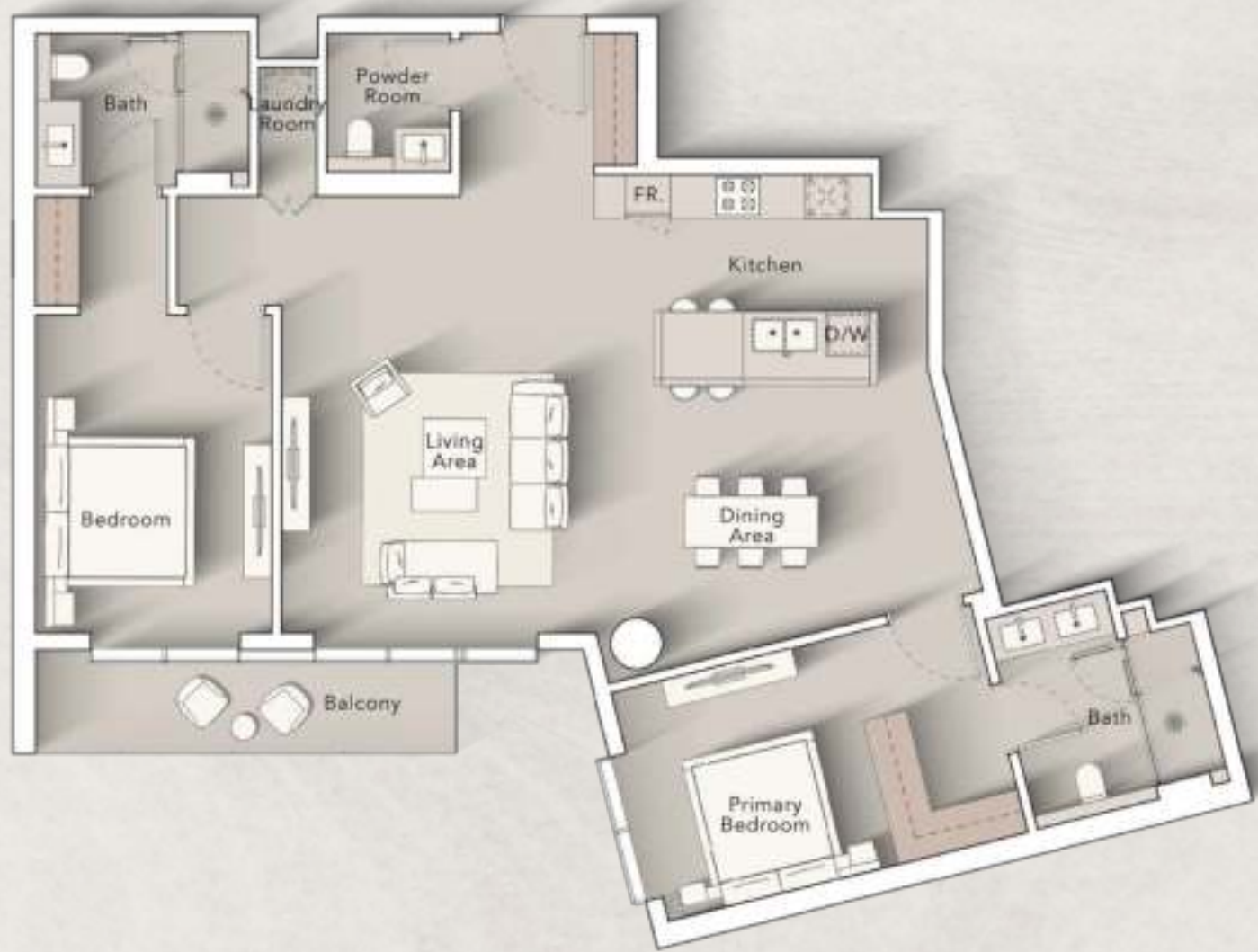


## **3<sup>rd</sup> - 10<sup>th</sup> Floor:**





**2 BEDROOM  
TYPE C**



Internal Living Area	:	1324.07 Sq. Ft
Outdoor Living Area	:	81.91 Sq. Ft
Total Living Area	:	1405.98 Sq. Ft

**2<sup>nd</sup> Floor:**



**3<sup>rd</sup> - 10<sup>th</sup> Floor:**



**2 BEDROOM**  
**TYPE D**



Internal Living Area	:	1121.06 Sq. Ft
Outdoor Living Area	:	208.82 Sq. Ft
Total Living Area	:	1329.88 Sq. Ft

**2<sup>nd</sup> Floor:**

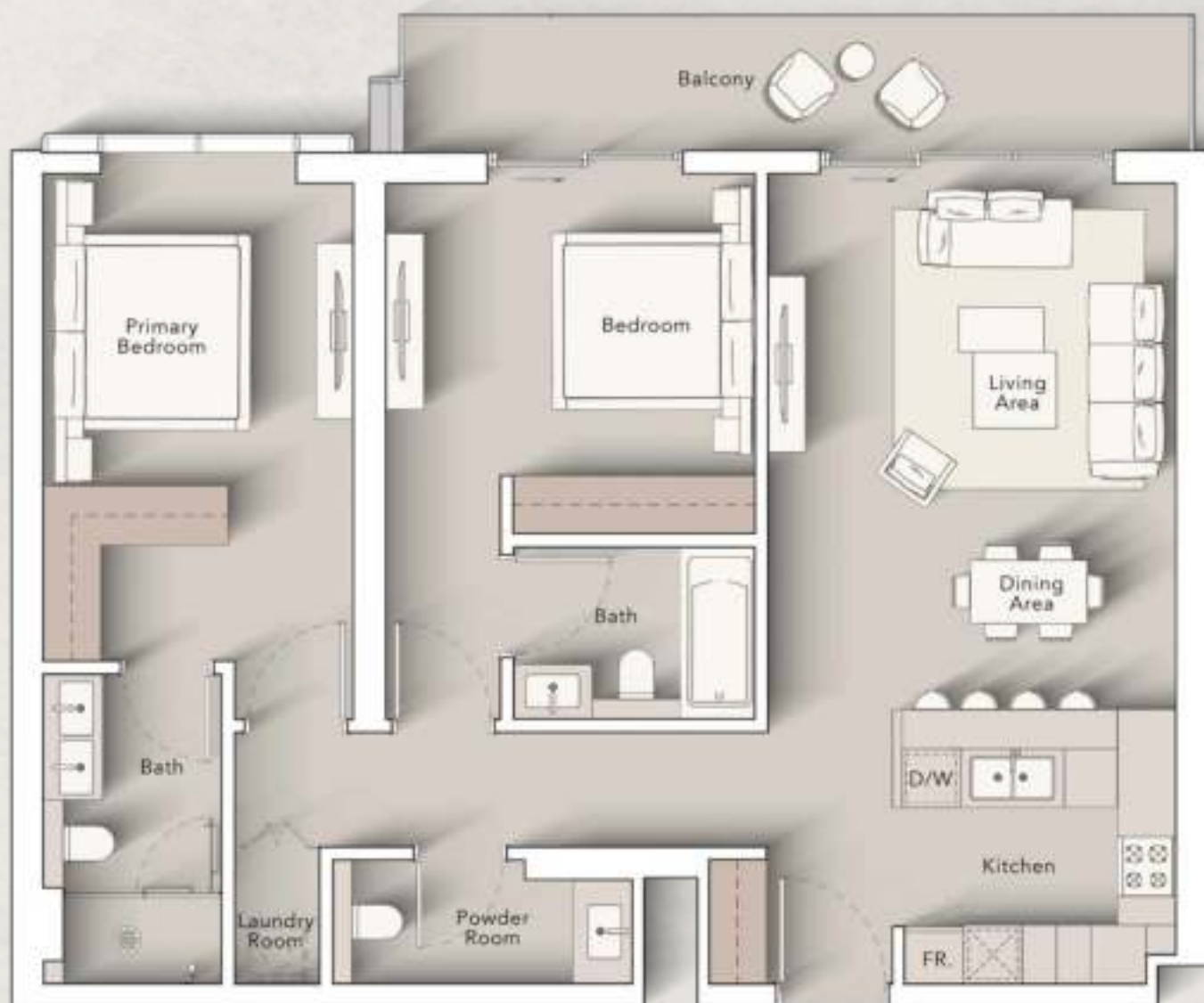


**3<sup>rd</sup> - 10<sup>th</sup> Floor:**





**2 BEDROOM  
TYPE E**



Internal Living Area	:	1084.25 Sq. Ft
Outdoor Living Area	:	131.75 Sq. Ft
Total Living Area	:	1216.00 Sq. Ft

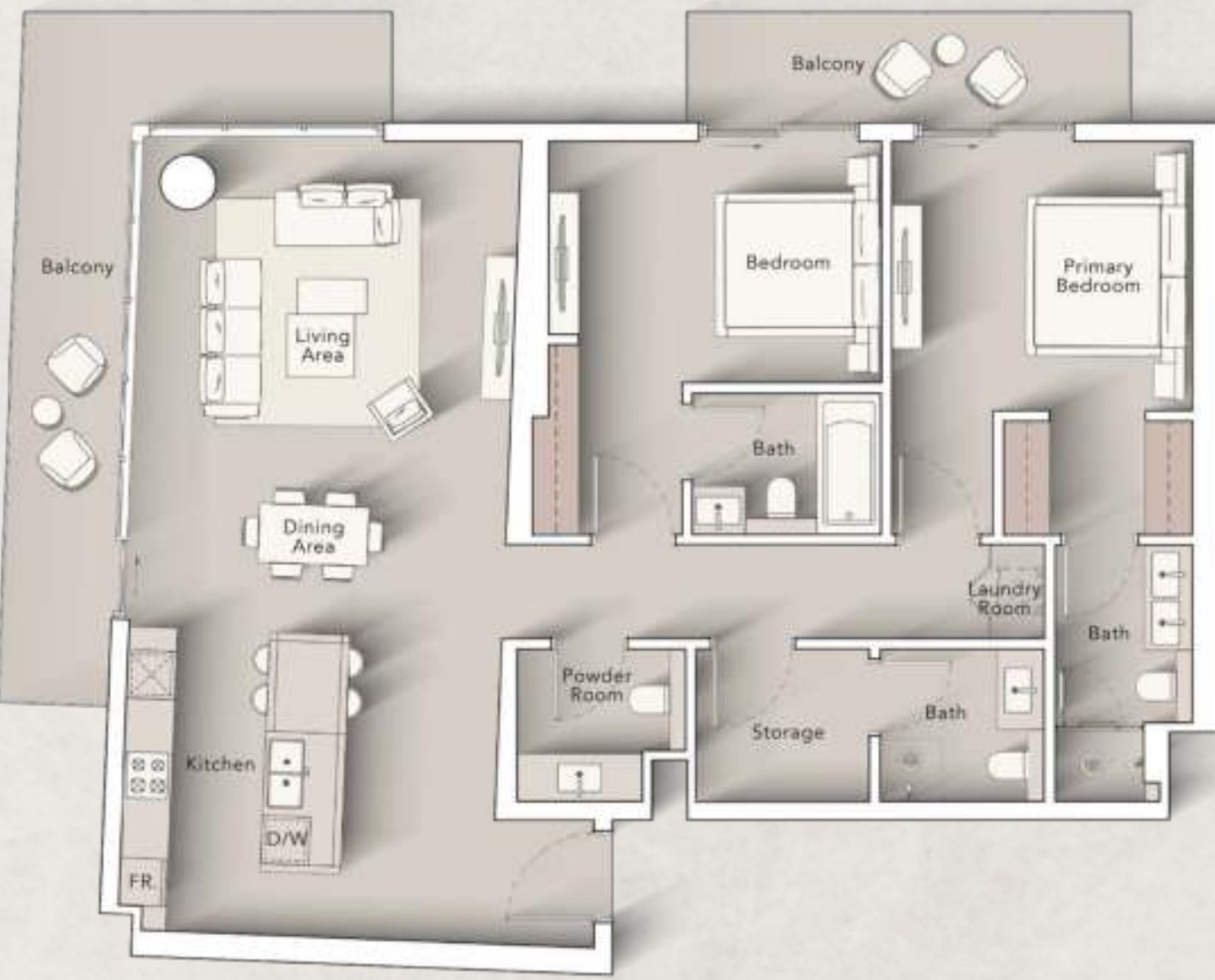
**2<sup>nd</sup> Floor:**



**3<sup>rd</sup> - 10<sup>th</sup> Floor:**



**2 BEDROOM**  
**TYPE F**



Internal Living Area	:	1349.47 Sq. Ft
Outdoor Living Area	:	273.83 Sq. Ft
Total Living Area	:	1623.31 Sq. Ft

**2<sup>nd</sup> Floor:**



**3<sup>rd</sup> - 10<sup>th</sup> Floor:**





**2 BEDROOM  
TYPE G**



Internal Living Area	:	1279.51 Sq. Ft
Outdoor Living Area	:	254.78 Sq. Ft
Total Living Area	:	1534.29 Sq. Ft

**2<sup>nd</sup> Floor:**



**3<sup>rd</sup> - 10<sup>th</sup> Floor:**



**2 BEDROOM**  
**TYPE H**



Internal Living Area	:	1171.33 Sq. Ft
Outdoor Living Area	:	98.38 Sq. Ft
Total Living Area	:	1269.71 Sq. Ft

**2<sup>nd</sup> Floor:**



**3<sup>rd</sup> - 10<sup>th</sup> Floor:**





# **3 BEDROOM** **TYPE A**



Internal Living Area	:	1525.78 Sq. Ft
Outdoor Living Area	:	341.22 Sq. Ft
Total Living Area	:	1867.00 Sq. Ft

**2<sup>nd</sup> Floor:**



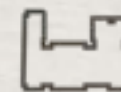
**3<sup>rd</sup> - 10<sup>th</sup> Floor:**



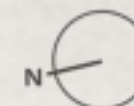
### 3 BEDROOM TYPE B



EAST

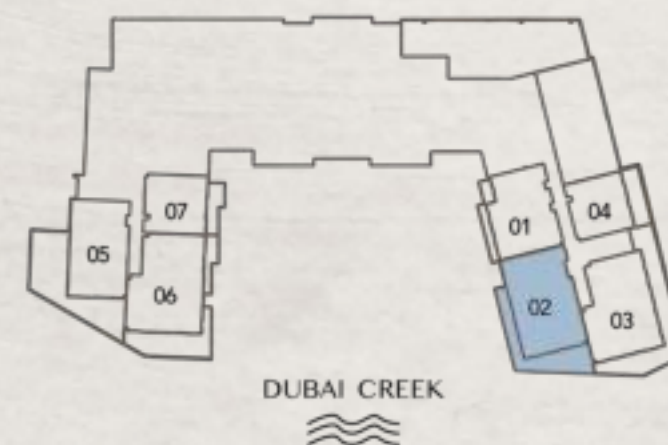


WEST



Internal Living Area : 1563.14 Sq. Ft  
Outdoor Living Area : 235.41 Sq. Ft  
Total Living Area : 1798.54 Sq. Ft

#### 2<sup>nd</sup> Floor:



#### 3<sup>rd</sup> - 10<sup>th</sup> Floor:





# **3 BEDROOM** **TYPE C**



Internal Living Area	:	1682.61 Sq. Ft
Outdoor Living Area	:	248.75 Sq. Ft
Total Living Area	:	1931.37 Sq. Ft

**2<sup>nd</sup> Floor:**



**3<sup>rd</sup> - 10<sup>th</sup> Floor:**



# **3 BEDROOM** **TYPE D**



Internal Living Area	:	1778.84 Sq. Ft
Outdoor Living Area	:	99.89 Sq. Ft
Total Living Area	:	1878.73 Sq. Ft

2<sup>nd</sup> Floor:



3<sup>rd</sup> - 10<sup>th</sup> Floor:







### CONTACT US

 +971 4 248 3400 |  +971 55 162 3236

### Email Us

info@tanamiproperties.ae

For More Info...

[www.tanamiproperties.com/Projects/Ellington-Art-Bay](http://www.tanamiproperties.com/Projects/Ellington-Art-Bay)



### **ADDRESS**

Office 3405, Marina Plaza,  
Al Marsa Street, Dubai Marina, UAE