



VERDANA II  
RESIDENCE

FLOOR PLANS



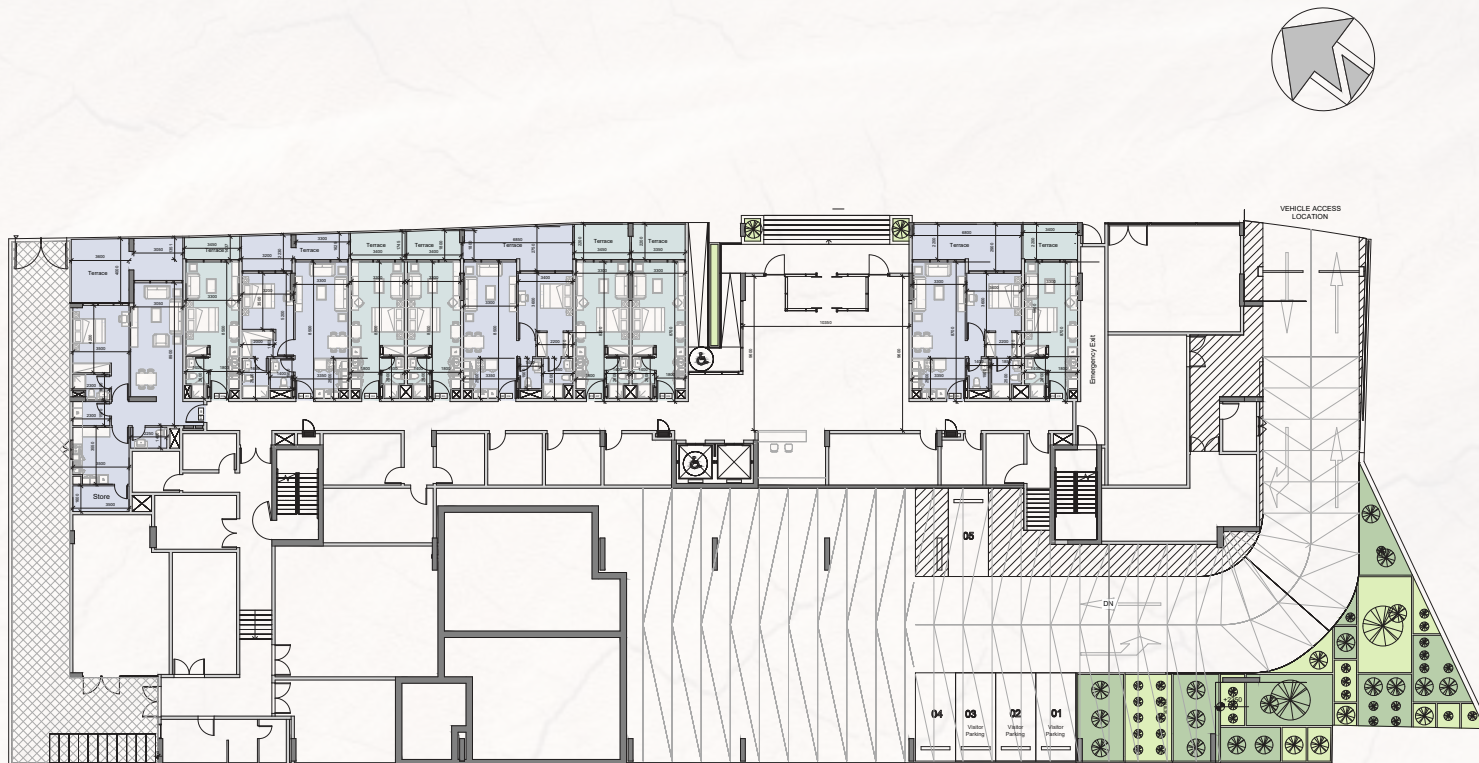
II

RESIDENCE



# LEVEL 00 - GROUND FLOOR

FLOOR PLAN

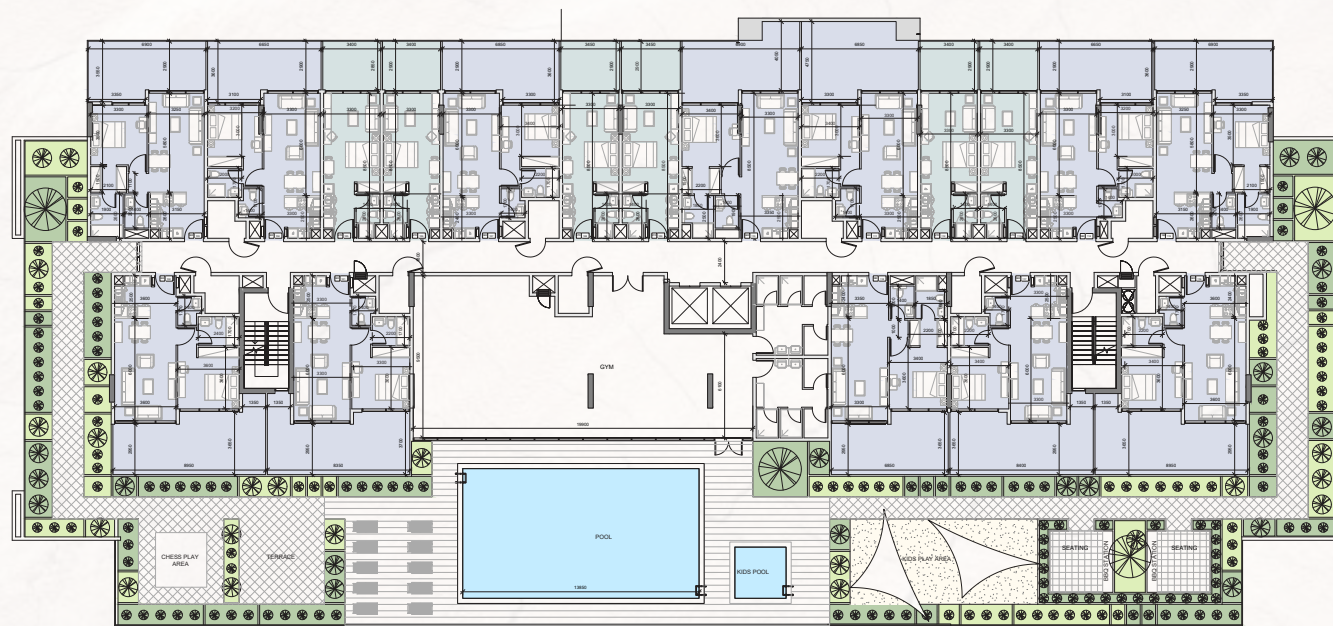


□ STUDIO

□ 1 BEDROOM

# LEVEL 01

FLOOR PLAN

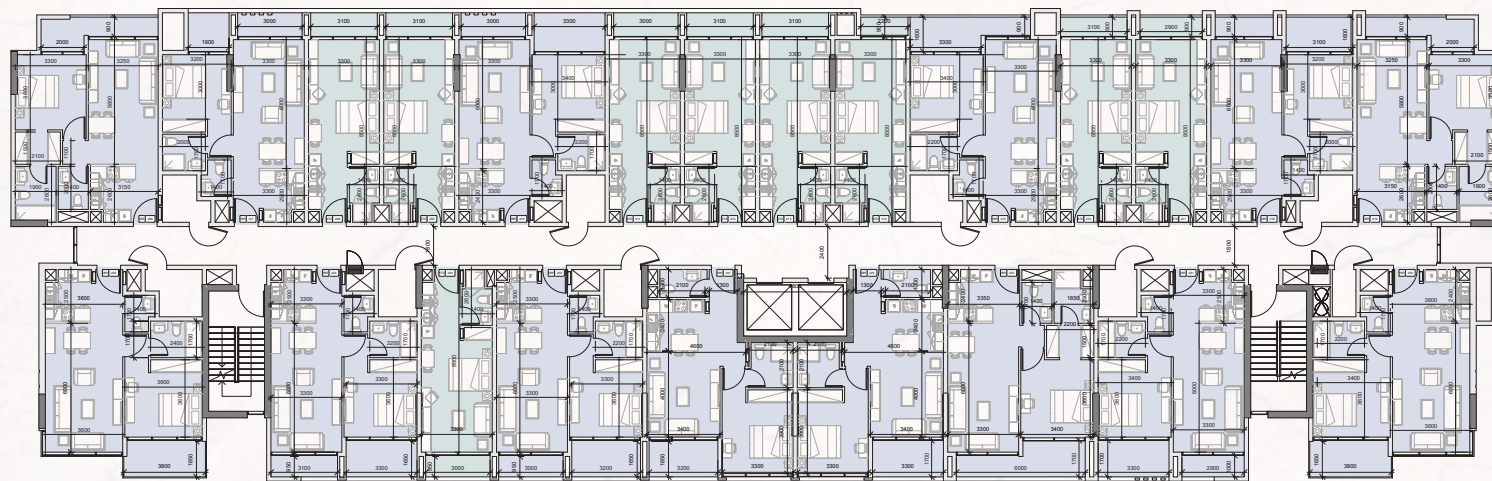


□ STUDIO      □ 1 BEDROOM



# LEVEL 02

FLOOR PLAN

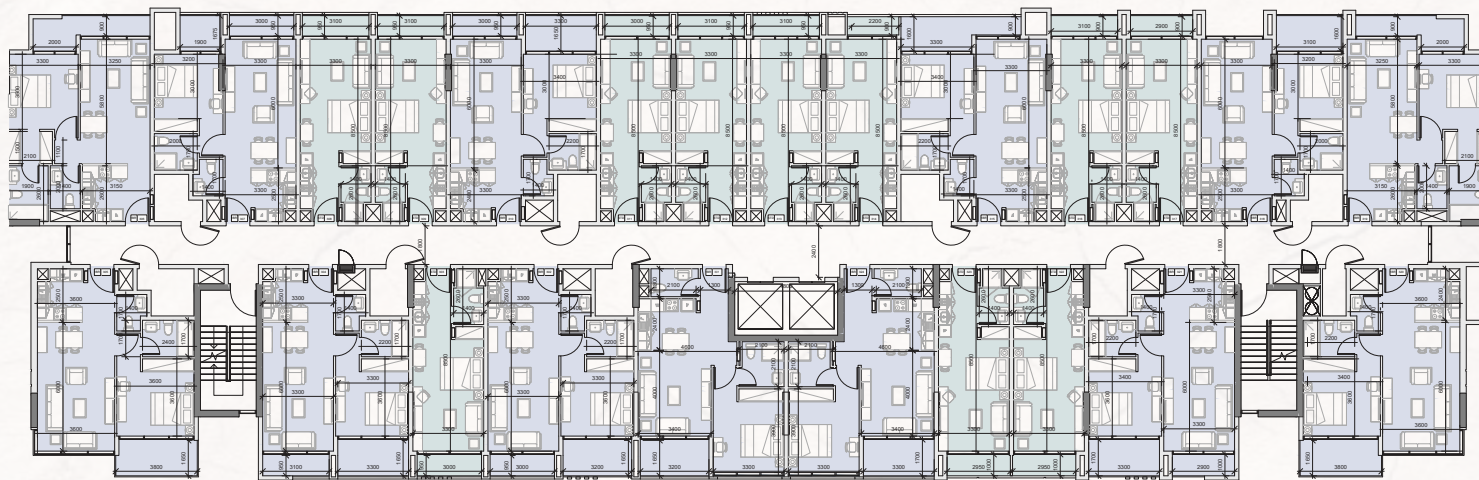


□ STUDIO

■ 1 BEDROOM

# LEVEL 03

FLOOR PLAN



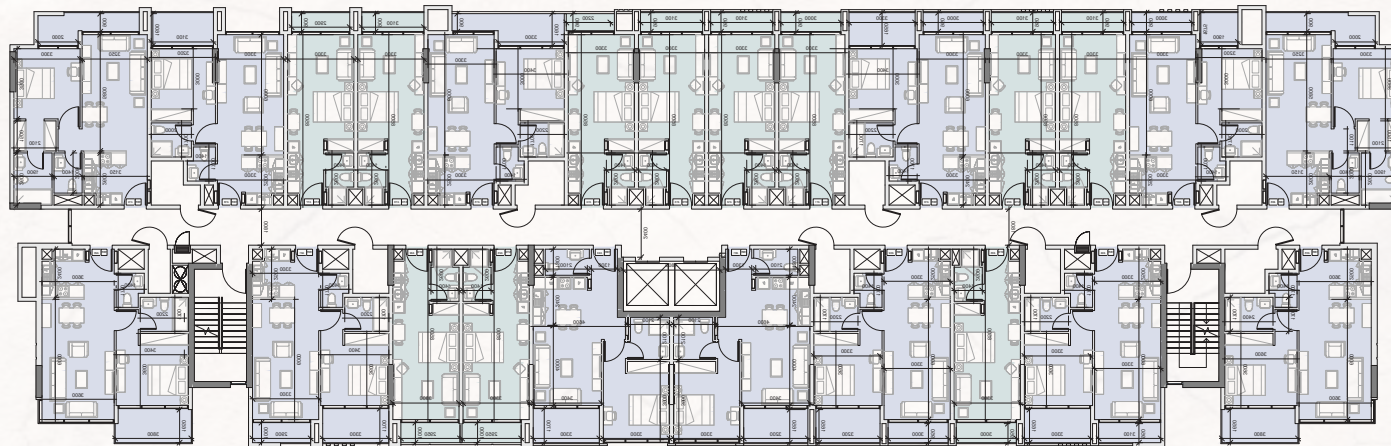
□ STUDIO

■ 1 BEDROOM



# LEVEL 04

FLOOR PLAN

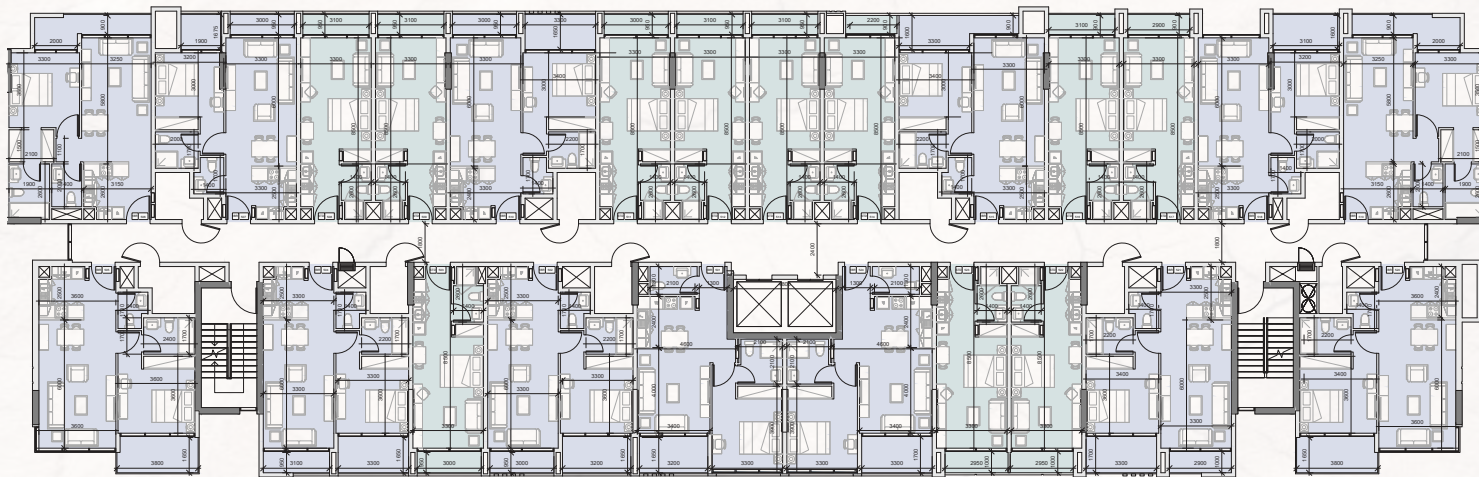


□ STUDIO

■ 1 BEDROOM

# LEVEL 05

FLOOR PLAN



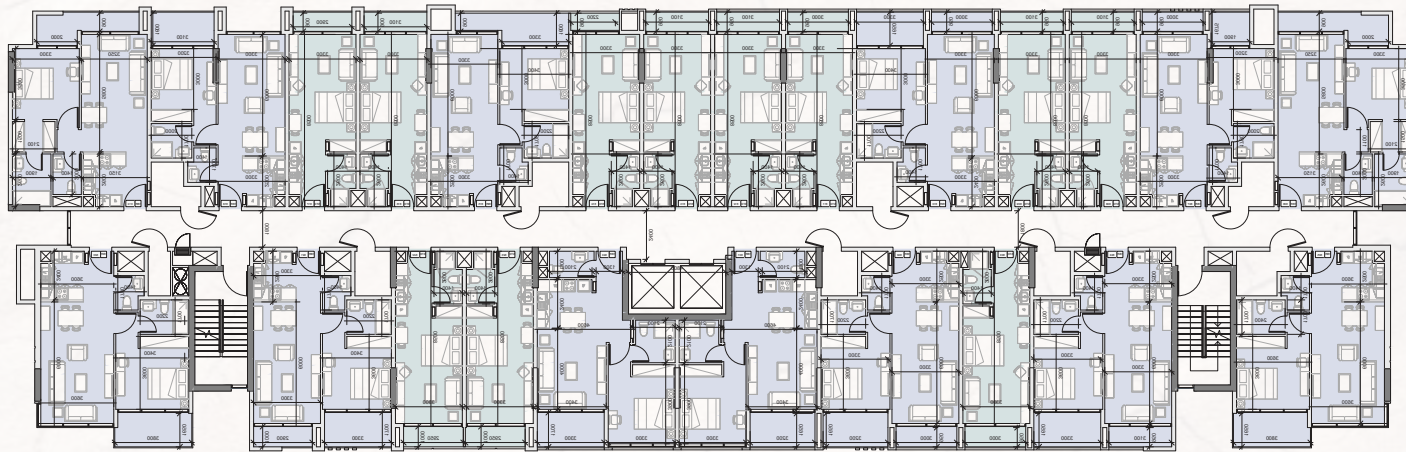
□ STUDIO

■ 1 BEDROOM



# LEVEL 06

FLOOR PLAN



□ STUDIO

□ 1 BEDROOM

# LEVEL 07

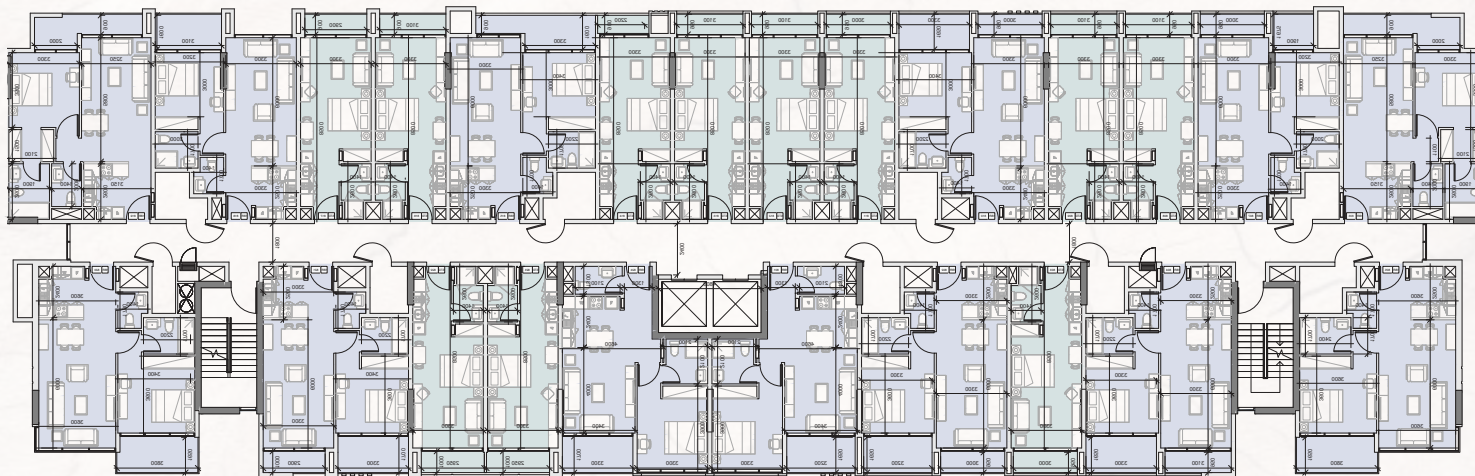
FLOOR PLAN





# LEVEL 08

FLOOR PLAN

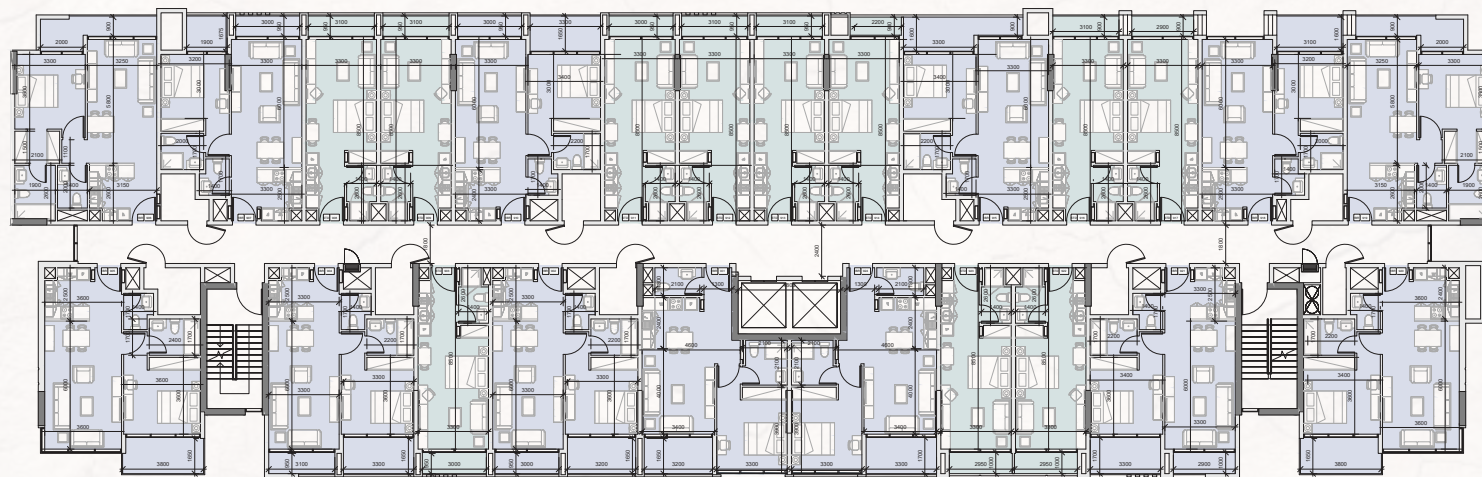


□ STUDIO

■ 1 BEDROOM

# LEVEL 09

FLOOR PLAN



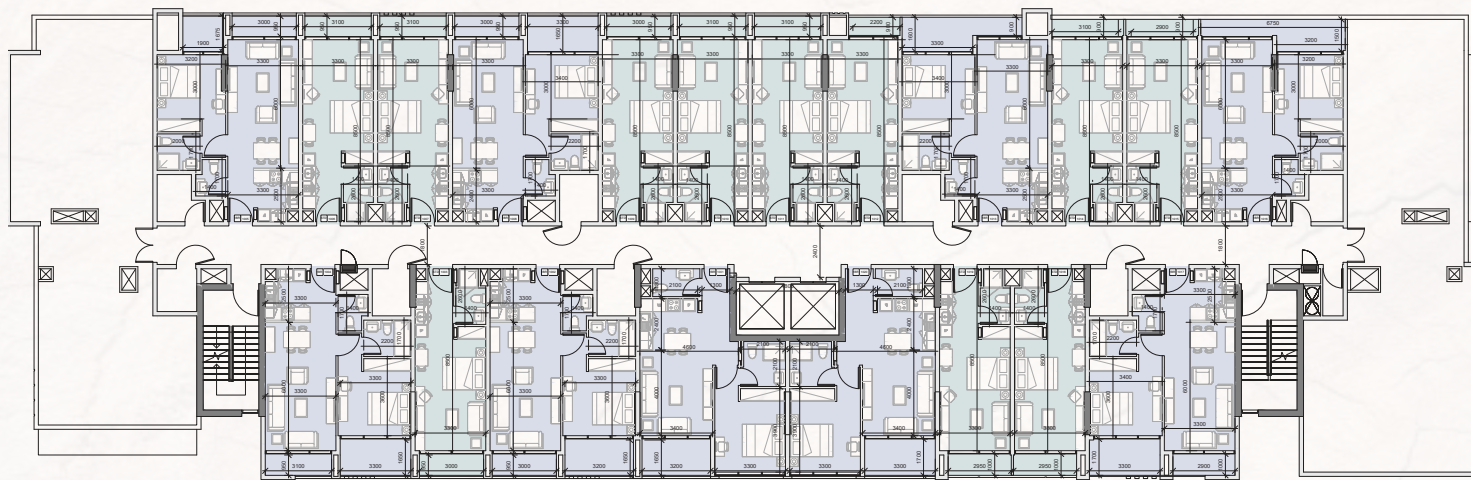
□ STUDIO

■ 1 BEDROOM



# LEVEL 10

FLOOR PLAN



□ STUDIO

□ 1 BEDROOM



# UNIT TYPES



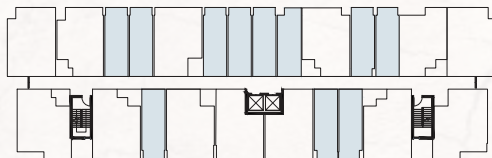
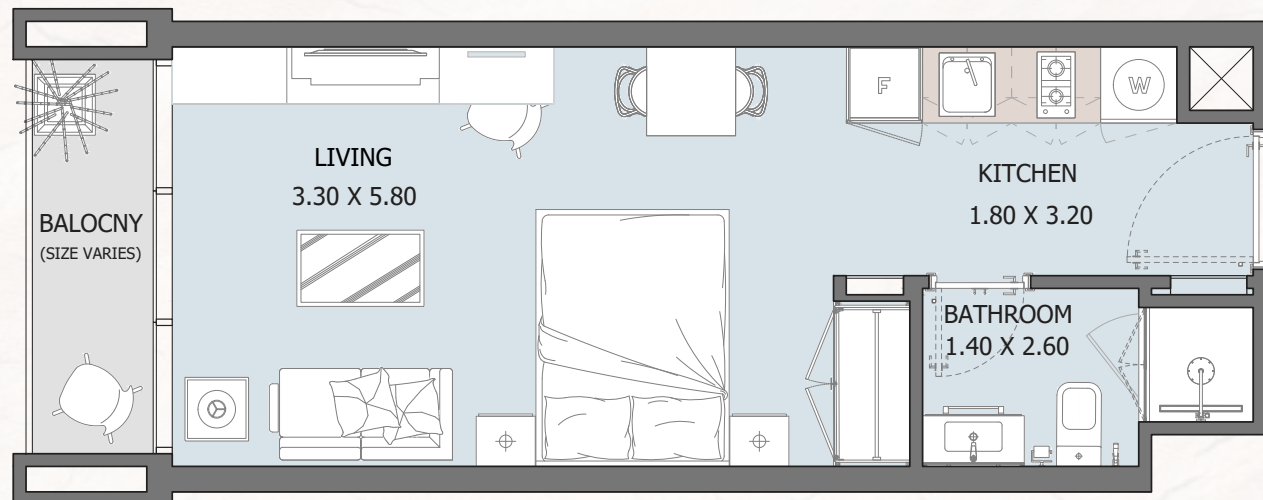
II

RESIDENCE



# STD

TYPE - A  
FROM GROUND FLOOR TO 10<sup>TH</sup> FLOOR

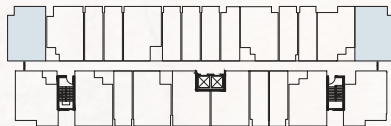
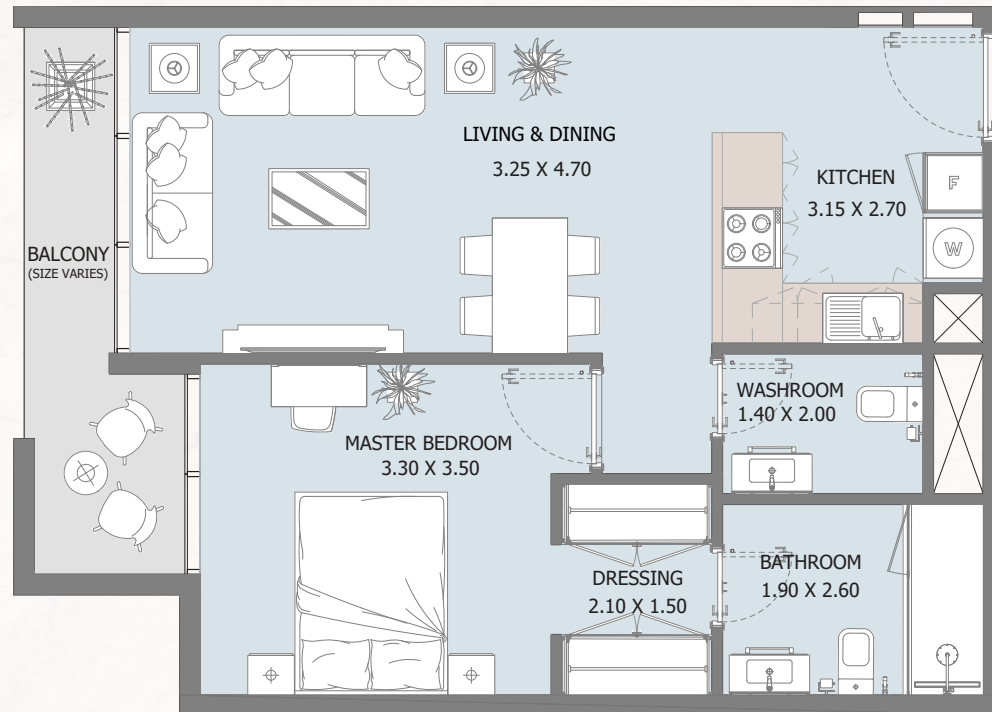


Internal Area	317.75 sq.ft
Outdoor Area	26.26 to 115.1 sq.ft
Total Area	344.1 to 432.8 sq.ft

All drawings and dimensions are approximate. Drawings are not to scale and are subject to change without notice. The developer reserves the right to make revisions. The units are measured at typical floors in the building and columns may vary in size depending on the floor level. The furnishing and accessories shown are for representation only. The availability, length and width of the balcony varies depending on which floor and which orientation the unit is located within the building. There will be slight differences in the internal areas between the same unit types depending on the shaft sizes that go through the units.

# 1B

TYPE - A  
FROM 1<sup>ST</sup> FLOOR TO 9<sup>TH</sup> FLOOR



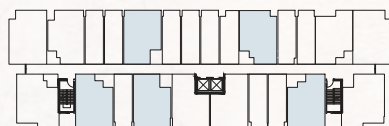
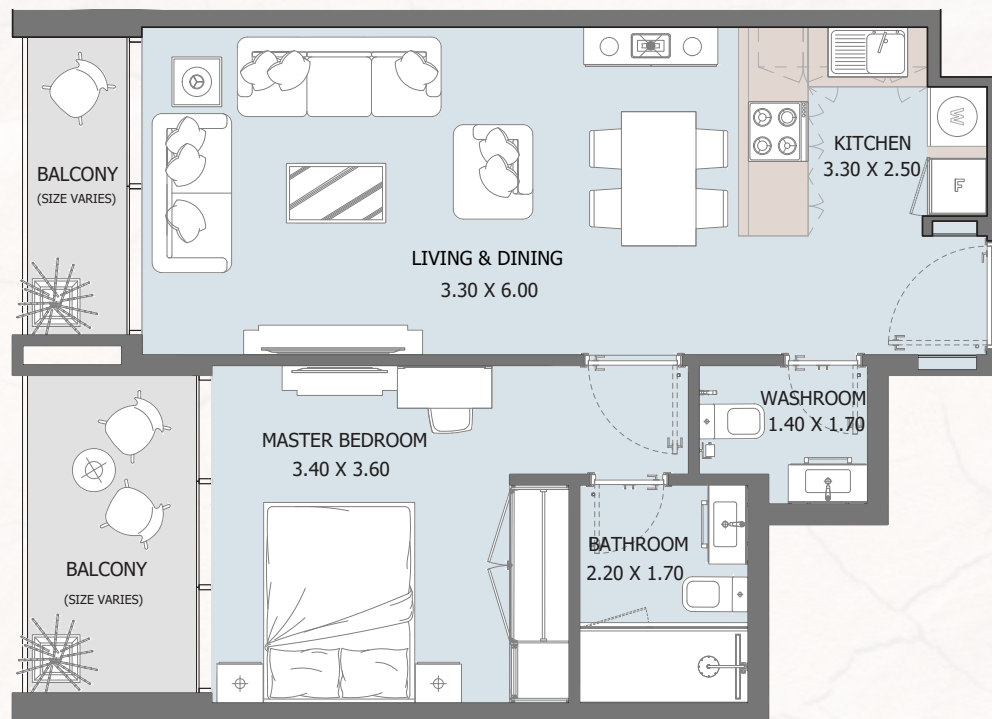
Internal Area	600 sq.ft
Outdoor Area	75.24 to 252.3 sq.ft
Total Area	675 to 852.1 sq.ft

All drawings and dimensions are approximate. Drawings are not to scale and are subject to change without notice. The developer reserves the right to make revisions. The units are measured at typical floors in the building and columns may vary in size depending on the floor level. The furnishing and accessories shown are for representation only. The availability, length and width of the balcony varies depending on which floor and which orientation the unit is located within the building. There will be slight differences in the internal areas between the same unit types depending on the shaft sizes that go through the units.



# 1B

TYPE - B  
FROM 1<sup>ST</sup> FLOOR TO 10<sup>TH</sup> FLOOR

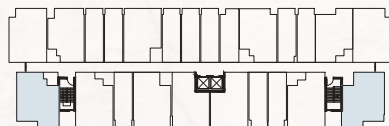
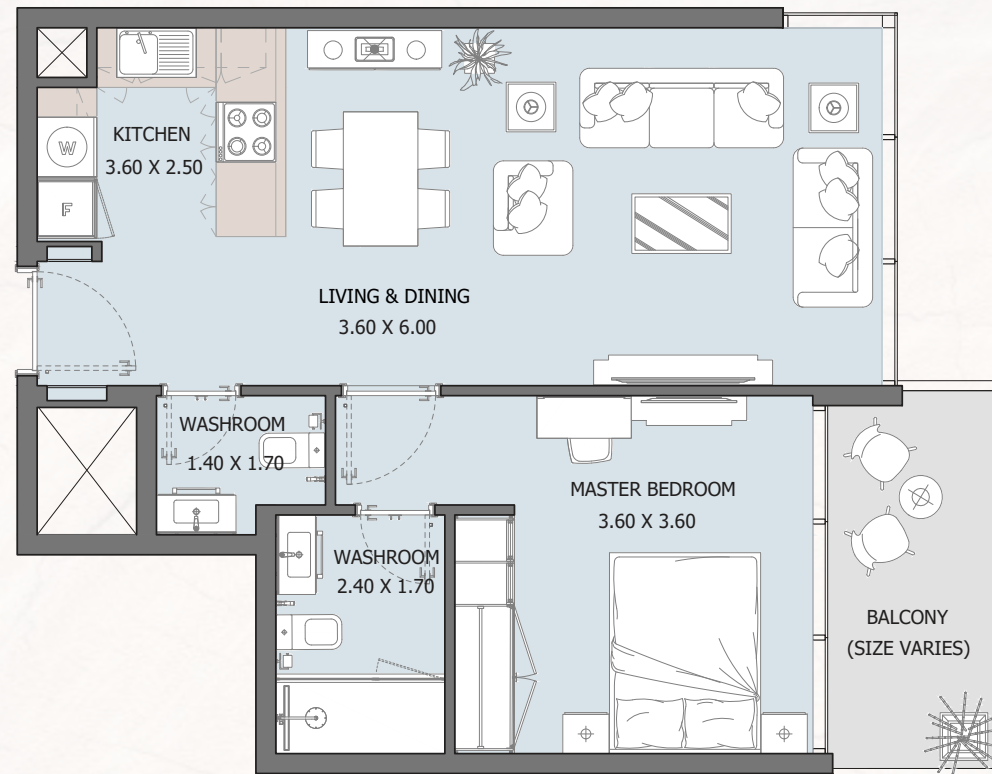


Internal Area	550.68 sq.ft
Outdoor Area	90.63 to 342.72 sq.ft
Total Area	641.31 to 893.40 sq.ft

All drawings and dimensions are approximate. Drawings are not to scale and are subject to change without notice. The developer reserves the right to make revisions. The units are measured at typical floors in the building and columns may vary in size depending on the floor level. The furnishing and accessories shown are for representation only. The availability, length and width of the balcony varies depending on which floor and which orientation the unit is located within the building. There will be slight differences in the internal areas between the same unit types depending on the shaft sizes that go through the units.

# 1B TYPE - c

FROM 1<sup>ST</sup> FLOOR TO 9<sup>TH</sup> FLOOR



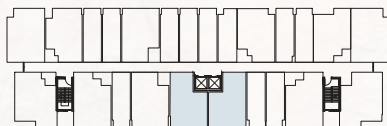
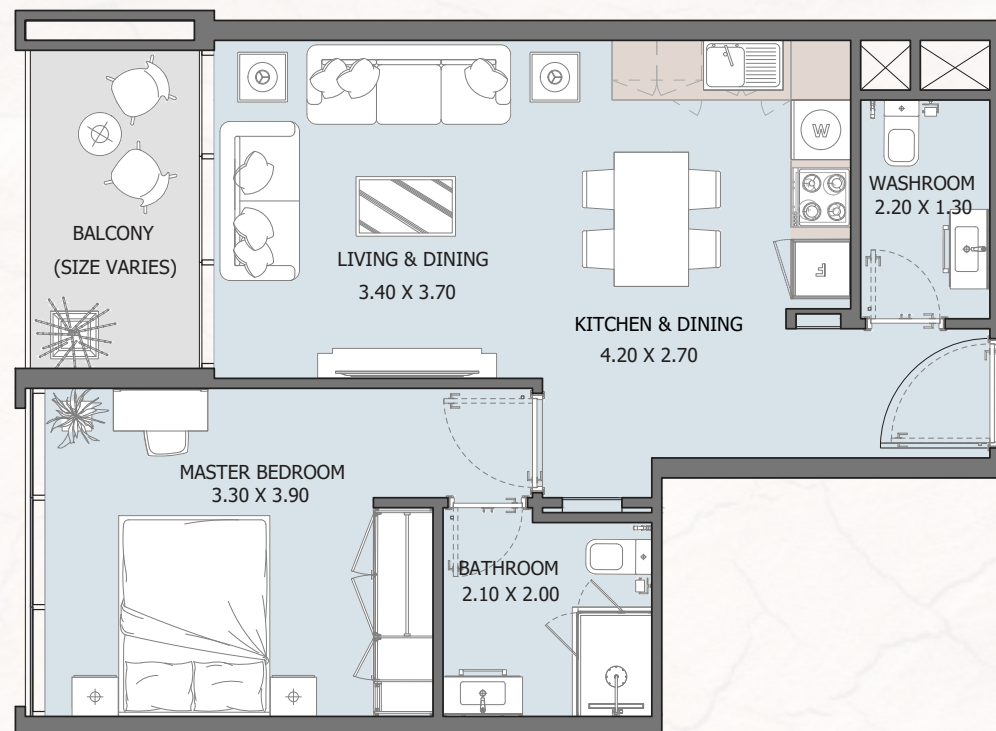
Internal Area	590.72 sq.ft
Outdoor Area	75.46 to 362.74 sq.ft
Total Area	666.17 to 953.47 sq.ft

All drawings and dimensions are approximate. Drawings are not to scale and are subject to change without notice. The developer reserves the right to make revisions. The units are measured at typical floors in the building and columns may vary in size depending on the floor level. The furnishing and accessories shown are for representation only. The availability, length and width of the balcony varies depending on which floor and which orientation the unit is located within the building. There will be slight differences in the internal areas between the same unit types depending on the shaft sizes that go through the units.



# 1B

TYPE - D  
FROM 2<sup>ND</sup> FLOOR TO 10<sup>TH</sup> FLOOR

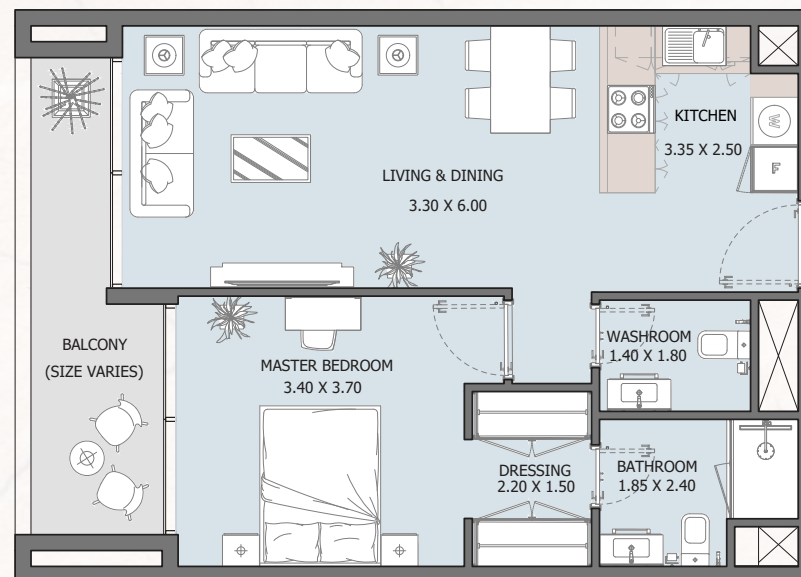


Internal Area	559.18 sq.ft
Outdoor Area	68.02 to 71.14 sq.ft
Total Area	626.78 to 630.33 sq.ft

All drawings and dimensions are approximate. Drawings are not to scale and are subject to change without notice. The developer reserves the right to make revisions. The units are measured at typical floors in the building and columns may vary in size depending on the floor level. The furnishing and accessories shown are for representation only. The availability, length and width of the balcony varies depending on which floor and which orientation the unit is located within the building. There will be slight differences in the internal areas between the same unit types depending on the shaft sizes that go through the units.

# 1B TYPE - E

FROM GROUND FLOOR TO 2<sup>ND</sup> FLOOR



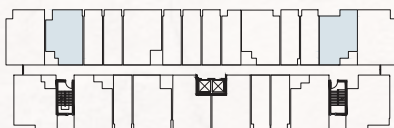
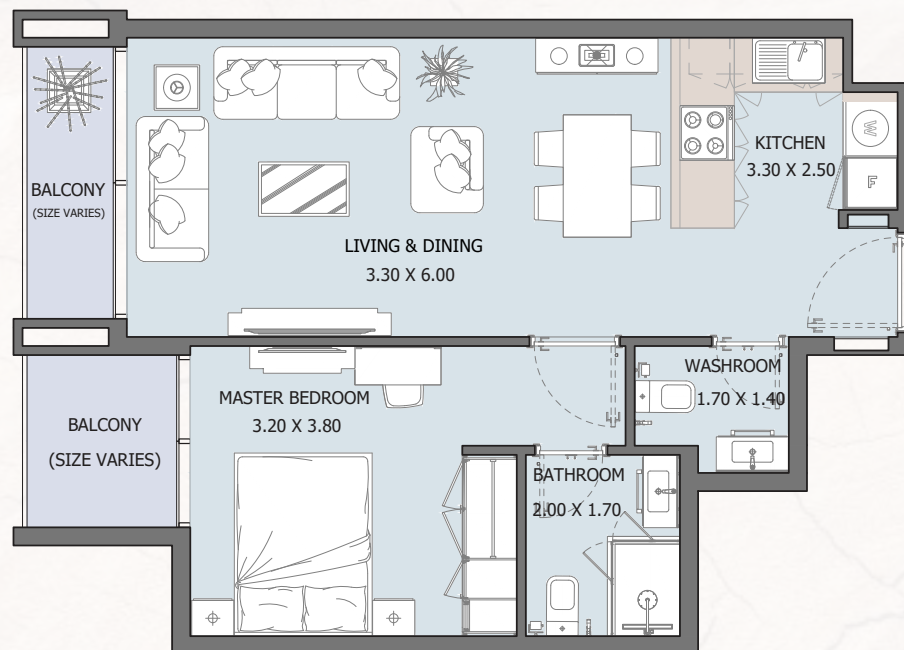
Internal Area	605.47 sq.ft
Outdoor Area	102.58 to 286 sq.ft
Total Area	709.34 to 892.65 sq.ft

All drawings and dimensions are approximate. Drawings are not to scale and are subject to change without notice. The developer reserves the right to make revisions. The units are measured at typical floors in the building and columns may vary in size depending on the floor level. The furnishing and accessories shown are for representation only. The availability, length and width of the balcony varies depending on which floor and which orientation the unit is located within the building. There will be slight differences in the internal areas between the same unit types depending on the shaft sizes that go through the units.



# 1B

TYPE - F  
FROM 1<sup>ST</sup> FLOOR TO 10<sup>TH</sup> FLOOR

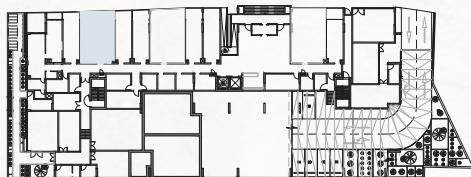
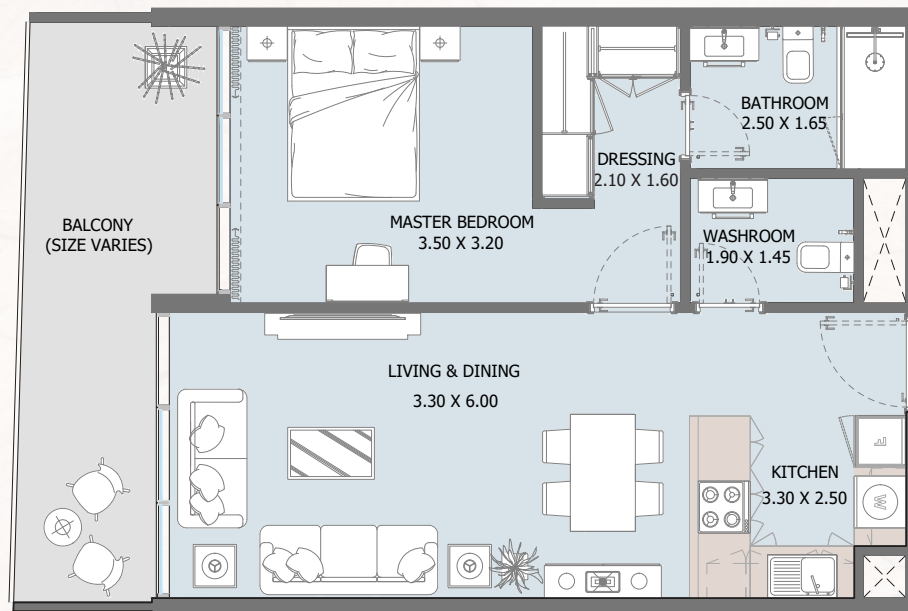


Internal Area	538.73 sq.ft
Outdoor Area	61.68 to 243.70 sq.ft
Total Area	600.41 to 782.43 sq.ft

All drawings and dimensions are approximate. Drawings are not to scale and are subject to change without notice. The developer reserves the right to make revisions. The units are measured at typical floors in the building and columns may vary in size depending on the floor level. The furnishing and accessories shown are for representation only. The availability, length and width of the balcony varies depending on which floor and which orientation the unit is located within the building. There will be slight differences in the internal areas between the same unit types depending on the shaft sizes that go through the units.

# 1B TYPE - G

GROUND FLOOR



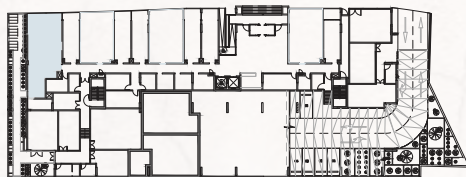
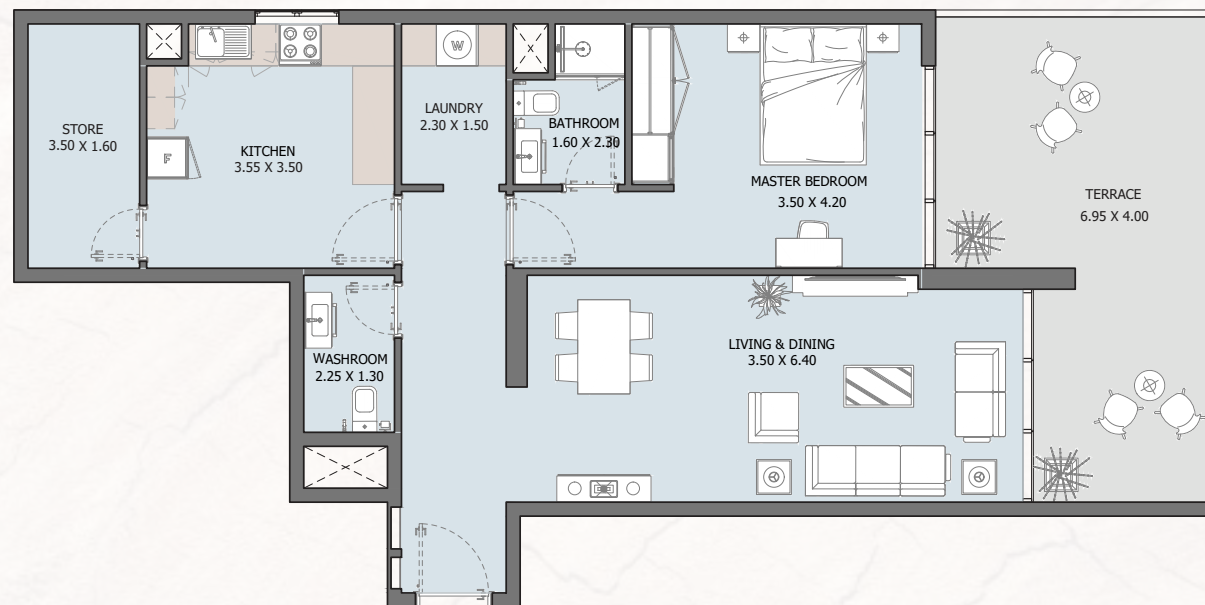
Internal Area	593.95 sq.ft
Outdoor Area	148.43 sq.ft
Total Area	742.38 sq.ft

All drawings and dimensions are approximate. Drawings are not to scale and are subject to change without notice. The developer reserves the right to make revisions. The units are measured at typical floors in the building and columns may vary in size depending on the floor level. The furnishing and accessories shown are for representation only. The availability, length and width of the balcony varies depending on which floor and which orientation the unit is located within the building. There will be slight differences in the internal areas between the same unit types depending on the shaft sizes that go through the units.



# 1B

TYPE - H  
GROUND FLOOR



Internal Area	900.40 sq.ft
Outdoor Area	265.49 sq.ft
Total Area	1165.84 sq.ft

All drawings and dimensions are approximate. Drawings are not to scale and are subject to change without notice. The developer reserves the right to make revisions. The units are measured at typical floors in the building and columns may vary in size depending on the floor level. The furnishing and accessories shown are for representation only. The availability, location and value of the furniture and accessories shown are subject to change without notice. There will be slight differences in the internal area between the same unit floor dimensions as the actual area that is shown on the site.



### CONTACT US

 +971 4 248 3400 |  +971 55 162 3236

Email Us

info@tanamiproperties.ae

For More Info...

[www.tanamiproperties.com/Projects/Verdana-Residence-2](http://www.tanamiproperties.com/Projects/Verdana-Residence-2)



### **ADDRESS**

Office 3405, Marina Plaza,  
Al Marsa Street, Dubai Marina, UAE