

W E Y B R I D G E
G A R D E N S

PROVENCE EDITION

The background of the entire page is a dark navy blue. It features a repeating pattern of light-colored, thin-lined illustrations of lavender plants. The pattern includes long, narrow leaves and clusters of small flowers, arranged in a way that creates a sense of depth and texture across the surface.

FLOOR PLANS

UNIT 04

STUDIO

TYPICAL UNIT TYPE 01



TOTAL AREA	
453.70 SQ.FT.	42.15 SQ.M.
TOTAL INTERNAL AREA	
365.87 SQ.FT.	33.99 SQ.M.
TOTAL EXTERNAL AREA	
87.83 SQ.FT.	8.16 SQ.M.

FLOOR PLATE



UNIT 05

STUDIO

TYPICAL UNIT TYPE 02



TOTAL AREA	
454.02 SQ.FT.	42.18 SQ.M.
TOTAL INTERNAL AREA	
366.30 SQ.FT.	34.03 SQ.M.
TOTAL EXTERNAL AREA	
87.73 SQ.FT.	8.15 SQ.M.

FLOOR PLATE



*Indicative floor plate shows the actual unit in dark beige and typical units of the same type in light beige.
**All drawings and dimensions are approximate. Drawings are not to scale and are subject to change without notice. The developer reserves the right to make revisions. The units are measured as a typical floor in the building and columns may vary in size depending on the floor level. The furnishings and accessories shown are for representation purposes only. The length and width of the unit and balcony varies depending on the floor and orientation, in line with building authority regulations and compliance.

*Indicative floor plate shows the actual unit in dark beige and typical units of the same type in light beige.
**All drawings and dimensions are approximate. Drawings are not to scale and are subject to change without notice. The developer reserves the right to make revisions. The units are measured as a typical floor in the building and columns may vary in size depending on the floor level. The furnishings and accessories shown are for representation purposes only. The length and width of the unit and balcony varies depending on the floor and orientation, in line with building authority regulations and compliance.

UNIT 03

STUDIO

TYPICAL UNIT TYPE 03



TOTAL AREA
353.59 SQ.FT. 32.85 SQ.M.

TOTAL INTERNAL AREA
269.10 SQ.FT. 25 SQ.M.

TOTAL EXTERNAL AREA
84.50 SQ.FT. 7.85 SQ.M.

FLOOR PLATE



UNIT 11

STUDIO

TYPICAL UNIT TYPE 04

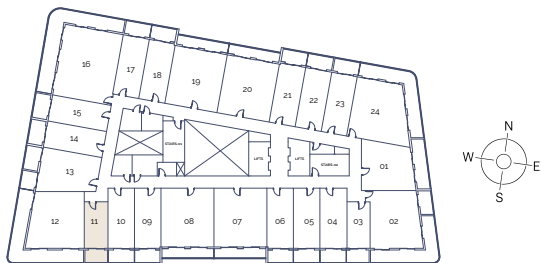


TOTAL AREA
353.59 SQ.FT. 32.85 SQ.M.

TOTAL INTERNAL AREA
269.10 SQ.FT. 25 SQ.M.

TOTAL EXTERNAL AREA
84.50 SQ.FT. 7.85 SQ.M.

FLOOR PLATE



*Indicative floor plate shows the actual unit in dark beige and typical units of the same type in light beige.
**All drawings and dimensions are approximate. Drawings are not to scale and are subject to change without notice. The developer reserves the right to make revisions. The units are measured as a typical floor in the building and columns may vary in size depending on the floor level. The furnishings and accessories shown are for representation purposes only. The length and width of the unit and balcony varies depending on the floor and orientation, in line with building authority regulations and compliance.

*Indicative floor plate shows the actual unit in dark beige and typical units of the same type in light beige.
**All drawings and dimensions are approximate. Drawings are not to scale and are subject to change without notice. The developer reserves the right to make revisions. The units are measured as a typical floor in the building and columns may vary in size depending on the floor level. The furnishings and accessories shown are for representation purposes only. The length and width of the unit and balcony varies depending on the floor and orientation, in line with building authority regulations and compliance.

UNIT 01

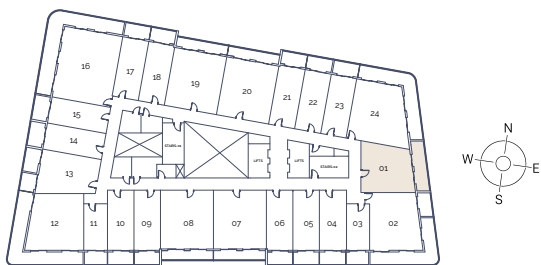
1 BEDROOM

TYPICAL UNIT TYPE 01



TOTAL AREA	
723.55 SQ.FT.	67.22 SQ.M.
TOTAL INTERNAL AREA	
552.73 SQ.FT.	51.35 SQ.M.
TOTAL EXTERNAL AREA	
170.82 SQ.FT.	15.87 SQ.M.

FLOOR PLATE



UNIT 07

1 BEDROOM

TYPICAL UNIT TYPE 02



TOTAL AREA	
846.90 SQ.FT.	78.68 SQ.M.
TOTAL INTERNAL AREA	
717.63 SQ.FT.	66.67 SQ.M.
TOTAL EXTERNAL AREA	
129.27 SQ.FT.	12.01 SQ.M.

FLOOR PLATE



*Indicative floor plate shows the actual unit in dark beige and typical units of the same type in light beige.

**All drawings and dimensions are approximate. Drawings are not to scale and are subject to change without notice. The developer reserves the right to make revisions. The units are measured as a typical floor in the building and columns may vary in size depending on the floor level. The furnishings and accessories shown are for representation purposes only. The length and width of the unit and balcony varies depending on the floor and orientation, in line with building authority regulations and compliance.

*Indicative floor plate shows the actual unit in dark beige and typical units of the same type in light beige.

**All drawings and dimensions are approximate. Drawings are not to scale and are subject to change without notice. The developer reserves the right to make revisions. The units are measured as a typical floor in the building and columns may vary in size depending on the floor level. The furnishings and accessories shown are for representation purposes only. The length and width of the unit and balcony varies depending on the floor and orientation, in line with building authority regulations and compliance.

UNIT 08

1 BEDROOM

TYPICAL UNIT TYPE 03



TOTAL AREA

846.15 SQ.FT. 78.61 SQ.M.

TOTAL INTERNAL AREA

716.88 SQ.FT. 66.60 SQ.M.

TOTAL EXTERNAL AREA

129.27 SQ.FT. 12.01 SQ.M.

FLOOR PLATE



UNIT 13

1 BEDROOM

TYPICAL UNIT TYPE 04



TOTAL AREA

699.12 SQ.FT. 64.95 SQ.M.

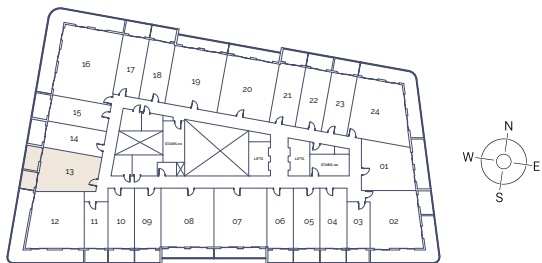
TOTAL INTERNAL AREA

532.06 SQ.FT. 49.43 SQ.M.

TOTAL EXTERNAL AREA

167.06 SQ.FT. 15.52 SQ.M.

FLOOR PLATE



*Indicative floor plate shows the actual unit in dark beige and typical units of the same type in light beige.

**All drawings and dimensions are approximate. Drawings are not to scale and are subject to change without notice. The developer reserves the right to make revisions. The units are measured as a typical floor in the building and columns may vary in size depending on the floor level. The furnishings and accessories shown are for representation purposes only. The length and width of the unit and balcony varies depending on the floor and orientation, in line with building authority regulations and compliance.

*Indicative floor plate shows the actual unit in dark beige and typical units of the same type in light beige.

**All drawings and dimensions are approximate. Drawings are not to scale and are subject to change without notice. The developer reserves the right to make revisions. The units are measured as a typical floor in the building and columns may vary in size depending on the floor level. The furnishings and accessories shown are for representation purposes only. The length and width of the unit and balcony varies depending on the floor and orientation, in line with building authority regulations and compliance.

UNIT 02

2 BEDROOM

TYPICAL UNIT TYPE 01



TOTAL AREA	
1100.72 SQ.FT.	102.26 SQ.M.
TOTAL INTERNAL AREA	
685.88 SQ.FT.	63.72 SQ.M.
TOTAL EXTERNAL AREA	
414.84 SQ.FT.	38.54 SQ.M.

FLOOR PLATE



UNIT 12

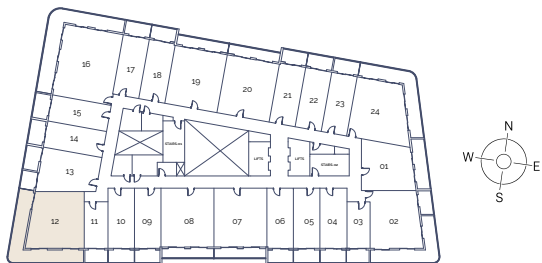
2 BEDROOM

TYPICAL UNIT TYPE 02



TOTAL AREA	
1182.52 SQ.FT.	109.86 SQ.M.
TOTAL INTERNAL AREA	
719.46 SQ.FT.	66.84 SQ.M.
TOTAL EXTERNAL AREA	
463.06 SQ.FT.	43.02 SQ.M.

FLOOR PLATE



*Indicative floor plate shows the actual unit in dark beige and typical units of the same type in light beige.

**All drawings and dimensions are approximate. Drawings are not to scale and are subject to change without notice. The developer reserves the right to make revisions. The units are measured as a typical floor in the building and columns may vary in size depending on the floor level. The furnishings and accessories shown are for representation purposes only. The length and width of the unit and balcony varies depending on the floor and orientation, in line with building authority regulations and compliance.

*Indicative floor plate shows the actual unit in dark beige and typical units of the same type in light beige.

**All drawings and dimensions are approximate. Drawings are not to scale and are subject to change without notice. The developer reserves the right to make revisions. The units are measured as a typical floor in the building and columns may vary in size depending on the floor level. The furnishings and accessories shown are for representation purposes only. The length and width of the unit and balcony varies depending on the floor and orientation, in line with building authority regulations and compliance.

UNIT 24

2 BEDROOM

TYPICAL UNIT TYPE 03



TOTAL AREA

1131.50 SQ.FT. 105.12 SQ.M.

TOTAL INTERNAL AREA

765.42 SQ.FT. 71.11 SQ.M.

TOTAL EXTERNAL AREA

366.08 SQ.FT. 34.01 SQ.M.

FLOOR PLATE



UNIT 16

3 BEDROOM

TYPICAL UNIT TYPE 01



TOTAL AREA

1527.18 SQ.FT. 141.88 SQ.M.

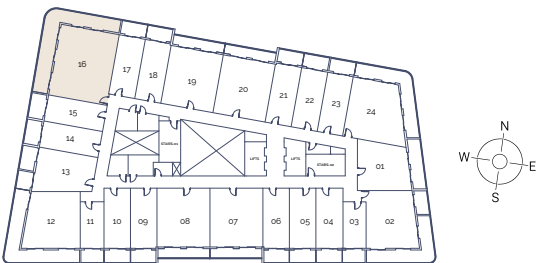
TOTAL INTERNAL AREA

1005.56 SQ.FT. 93.42 SQ.M.

TOTAL EXTERNAL AREA

521.62 SQ.FT. 48.46 SQ.M.

FLOOR PLATE



*Indicative floor plate shows the actual unit in dark beige and typical units of the same type in light beige.

**All drawings and dimensions are approximate. Drawings are not to scale and are subject to change without notice. The developer reserves the right to make revisions. The units are measured as a typical floor in the building and columns may vary in size depending on the floor level. The furnishings and accessories shown are for representation purposes only. The length and width of the unit and balcony varies depending on the floor and orientation, in line with building authority regulations and compliance.

*Indicative floor plate shows the actual unit in dark beige and typical units of the same type in light beige.

**All drawings and dimensions are approximate. Drawings are not to scale and are subject to change without notice. The developer reserves the right to make revisions. The units are measured as a typical floor in the building and columns may vary in size depending on the floor level. The furnishings and accessories shown are for representation purposes only. The length and width of the unit and balcony varies depending on the floor and orientation, in line with building authority regulations and compliance.



TANAMI

PROPERTIES

CONTACT US



+971 4 248 3400 |



+971 55 162 3236

Email Us

info@tanamiproperties.ae

For More Info...

www.tanamiproperties.com/Projects/Weybridge-Gardens-2



ADDRESS

Office 3405, Marina Plaza,
Al Marsa Street, Dubai Marina, UAE