



ALANDALUS

AT JUMEIRAH GOLF ESTATES

ALANDALUS

AT JUMEIRAH GOLF ESTATES

Jumeirah Golf Estates is an exclusive community, steeped in breathtaking beautiful acres of spectacular scenery coupled with every world-class amenity you'd expect from a life of privilege.

Located close to Al Maktoum International Airport, Jumeirah Golf Estates is just minutes from many of the city's landmark developments including Palm Jumeirah, the multi-award winning Burj Al Arab hotel, and Burj Khalifa, the world's tallest building.

Blending the best in modern living with the wonders of nature, Jumeirah Golf Estates presents the rare opportunity of living in a community that has been carefully planned to meet the needs of the modern family. Inspired by the majesty of nature, with stunning architecture, incredible views of championship golf courses, wonderful amenities and an exclusive location in the world's fastest growing city, the community offers an unmatched way of life.



JUMEIRAH
GOLF ESTATES







Nature comes calling at the first light of day. With flame trees and fire grass, dramatic bunkering and beautiful framing lakes, it's no surprise that you're not the only early riser to enjoy the morning. With one of the largest bird sanctuaries in Dubai, this truly unique destination comes alive with the sweetest sounds.

Welcome to Jumeirah Golf Estates.







*It's heaven on earth with the sounds of birds all day and the feeling of being cocooned by nature.
It all feels very relaxing and calming. I appreciate how close-knit this community is and how centrally located we are.
I've played golf elsewhere, and I think this is the best golf course in the world.*

Anil Shehri, Jumeirah Golf Estates resident



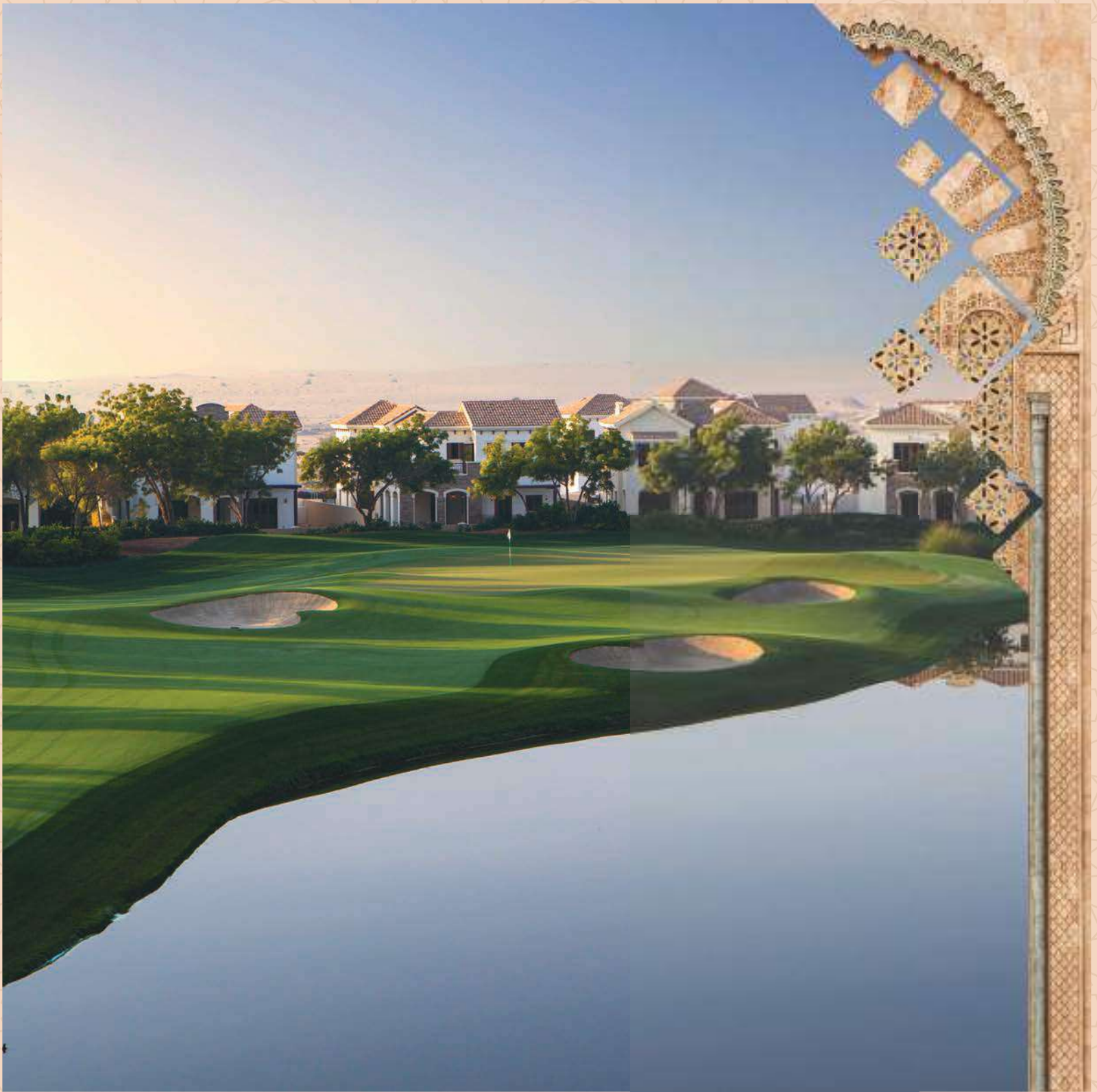


Take a moment to appreciate the distinctly Andalusian heritage around. Notice the flawless landscaping everywhere you turn, the water fountains all around and the beautiful view of the golf course from your spacious balcony. With so much natural beauty to inspire the day ahead, you'll agree, there's no place more special than home.











Whether you are a professional player, a beginner, a member or a guest, you'll find everything that makes golf the greatest game on earth, right here.

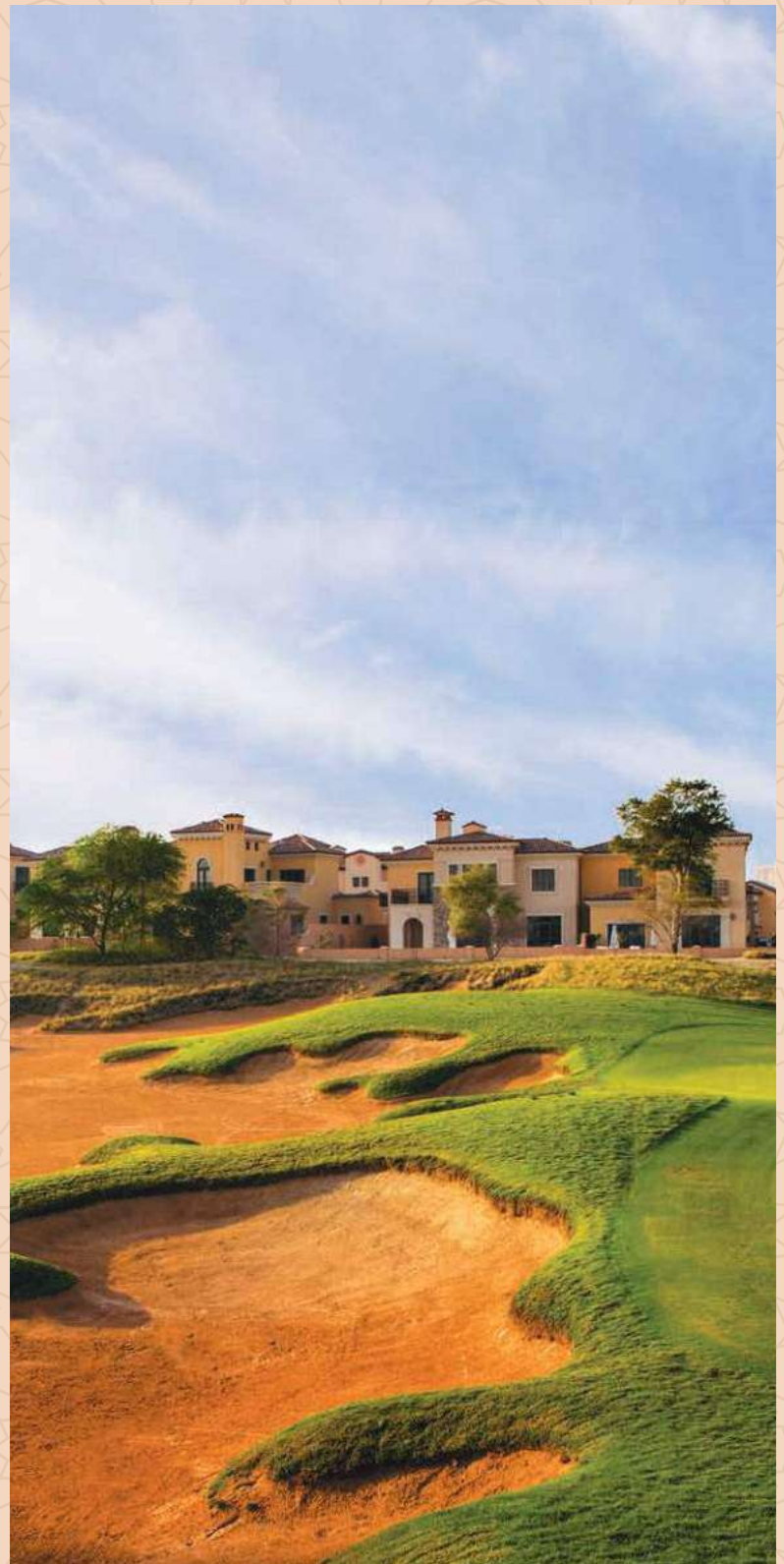
The Fire and Earth Courses offer golfers of all ages and abilities the opportunity to play two exciting and challenging layouts, each one providing unique and distinctive playing characteristics. Wind and Water courses to follow, will be equally exciting and beautifully themed.

Earth

Inspired by the great parkland courses of Europe and North America, Earth draws the world's best players for the season-ending finale of the 'Race to Dubai' series. Rolling fairways, brilliant white bunkering and deep red ochre landscape framed by a plethora of trees and shrubs set the scene for an incredible golfing experience.

Fire

The Fire Course is in perfect harmony with nature and framed by captivating flora to reflect the theme and to enhance the natural setting. The undulating topography, with varying protrusions, raise the challenge and level of play. Rustic and visually stunning to captivate every golfer and viewer, the Fire course, with its strong sense of classic links-style play, demands a sharp mind and strategy.





European Tour Performance Institute (ETPI)

The European Tour Performance Institute at Jumeirah Golf Estates is one of only two facilities of its kind in the world and is recognized for its unique features designed specifically to enhance the performance of golfers at every level of play. The latest tools and technologies are at hand to help them fine-tune and hone their game throughout the year.

ETPI Facility

A world-class facility designed to enhance the performance of Tour professionals and members alike. Using cutting-edge technology, the facility delivers unrivalled coaching and practice opportunities. The range of coaching and practice amenities includes a state-of-the-art gymnasium, biomechanical swing studios, physiotherapy treatment rooms, dedicated short game holes, practice bunkers, large contoured putting green, and practice teeing areas. Instructional programmes employing state-of-the-art coaching concepts.

ETPI Services

Golf coaching is available at the highest standard by our hand-picked team of PGA Professionals. Services cover all aspects of the game, establishing goals and training programs tailored to individual aspirations.

Titleist and Ping Custom fit studio with state of the art technology, designed to provide the latest made to measure equipment to help bring out the best in every player.

Dedicated Personal Trainers to develop and enhance overall health and fitness programmes. Trainers can tailor golf-specific training packages according to individual physical capabilities.

Sports Medical assessments by our onsite Physiotherapists, working on injuries and prevention, as well as golf-specific training to increase your physical capabilities.

Each service may be seen individually or in synergy to create the ultimate team to work towards your aspirations.



Henrik Stenson

Jumeirah Golf Estates Brand Ambassador



It's a green community and definitely the location of the future. Close to both airports, the Mall of the Emirates and well connected to the metro extension. Thinking ahead, the City Centre Mall will be great for the community too.

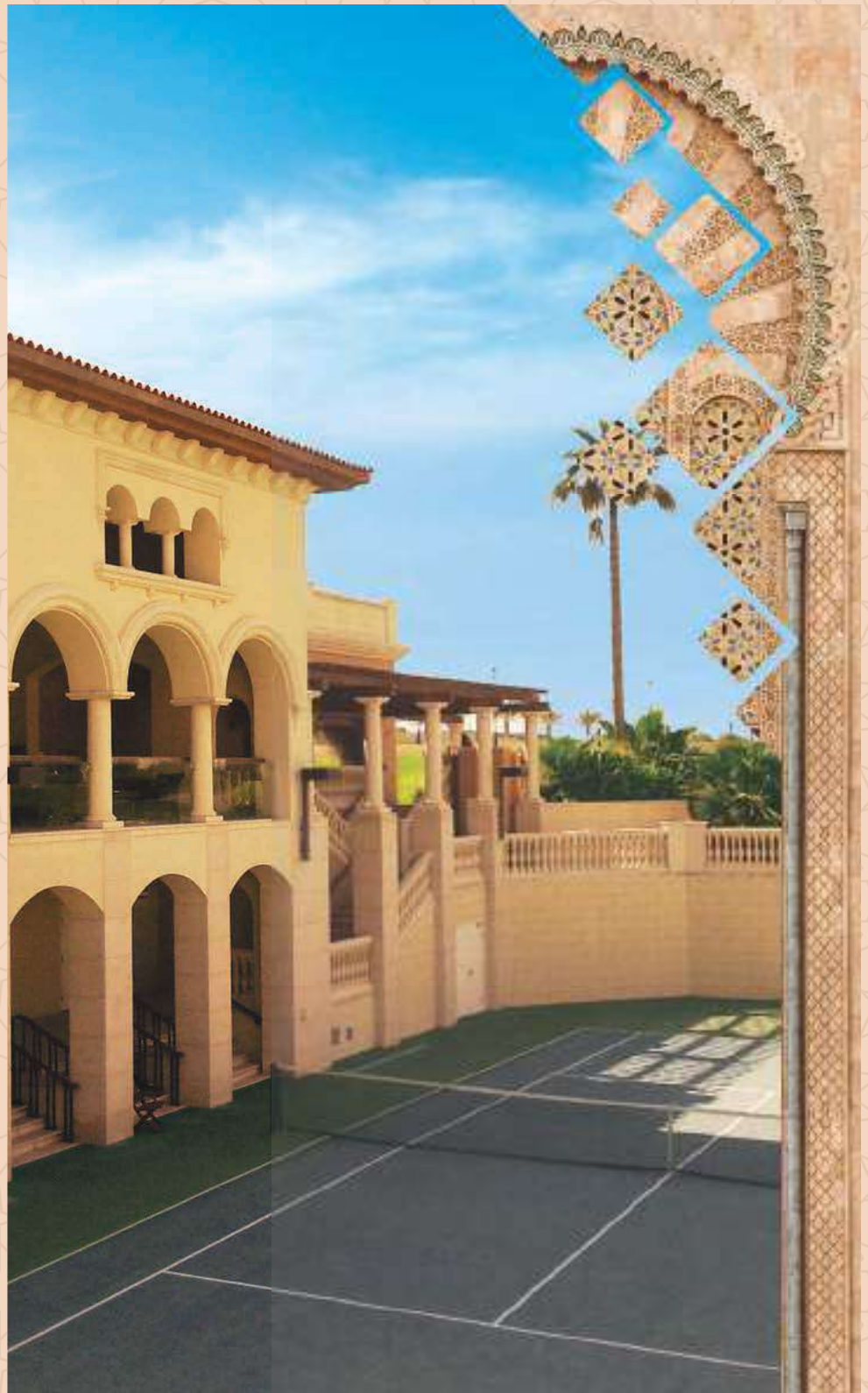
Arjun Raj Khanna, Jumeirah Golf Estates resident





Ready for a spot of lunch, sunbathing or serious sweating? You're in the right place. This 131,000 square-foot Clubhouse boasts a wide range of facilities including a variety of dining options.

- Swirl Bar & Lounge
- Fresca Delicatessen & Café
- Race to Dubai Suite
- Extensive Terrace Areas
- Swimming Pool
- Childrens Swimming Pool
- Events Lawn
- Mens Locker Rooms with Jacuzzi and Steam Room
- Ladies Locker Rooms
- Boardroom
- Retail Shop
- Pool & Snooker Tables
- Tennis Courts
- Extensive Fully Equipped Gym
- Dance/Aerobics Studio



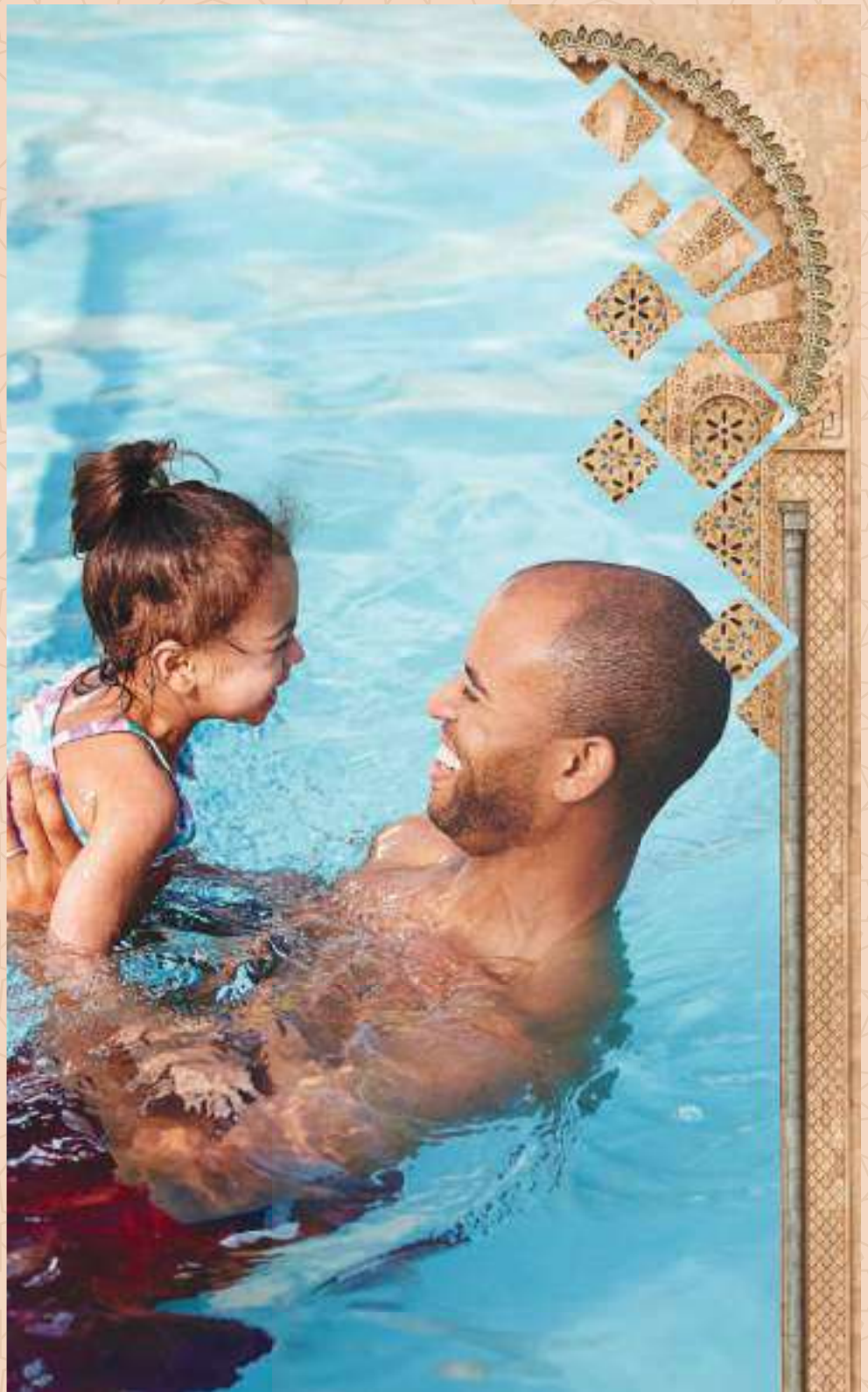


I love the serene, peaceful, calmness of living so close to nature - life feels balanced. The community spirit makes us want to be outdoors, in any temperature! The Clubhouse has lots of sports facilities; we can easily pass the day dining or doing various activities. And we constantly have events and parties.

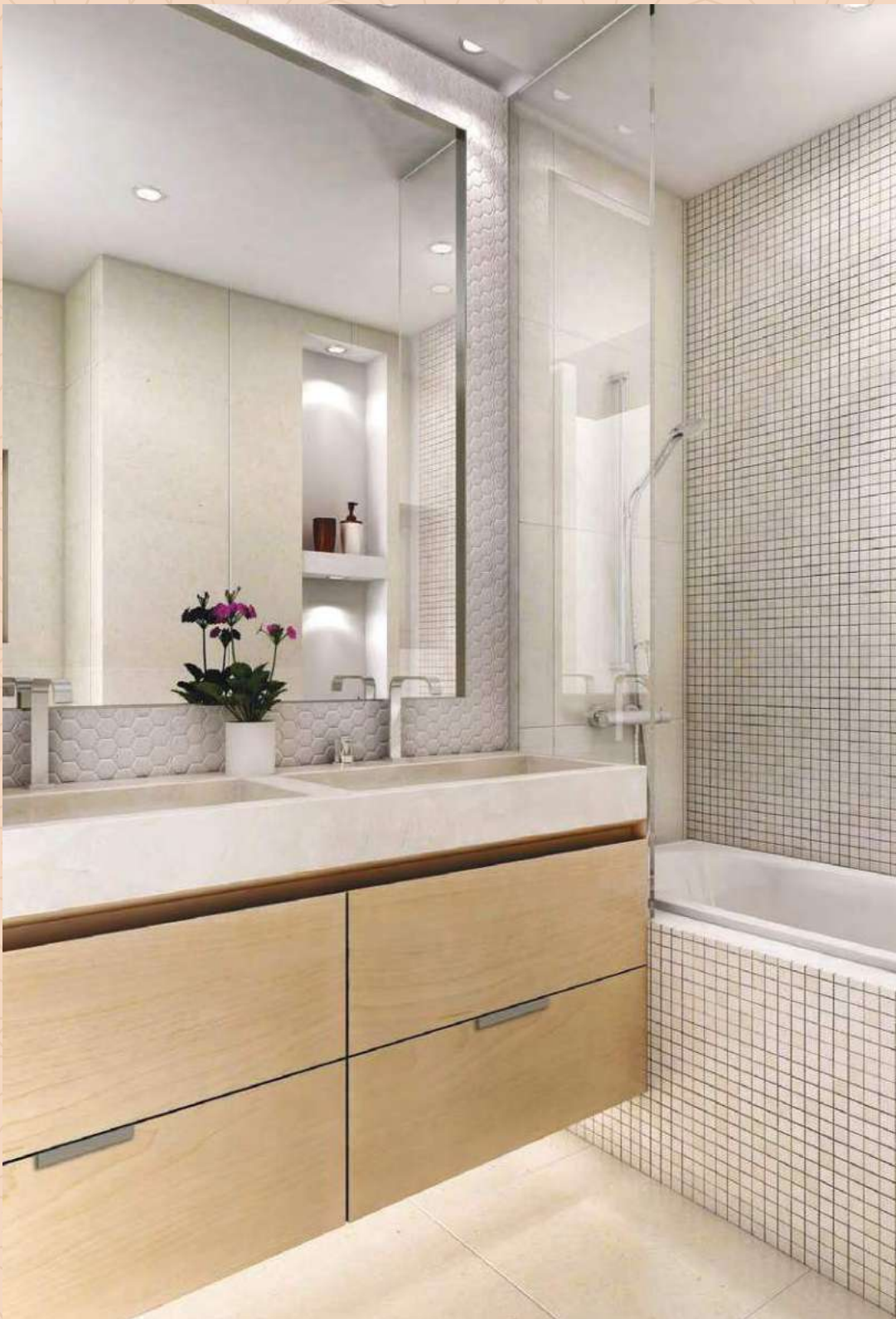
Myrna Ringburg, Jumeirah Golf Estates resident



Time to meet the friendliest community in town. Whether you are picking your kids from school, or nursery, or joining the community event of the day, you'll love the company. With outdoor dining, barbecue facilities, swimming pools for families and children, and events around the year, the fun never stops within this vibrant community. Every community festival is an occasion to make new friends; every celebration whether National Day or Halloween is a reason to smile.



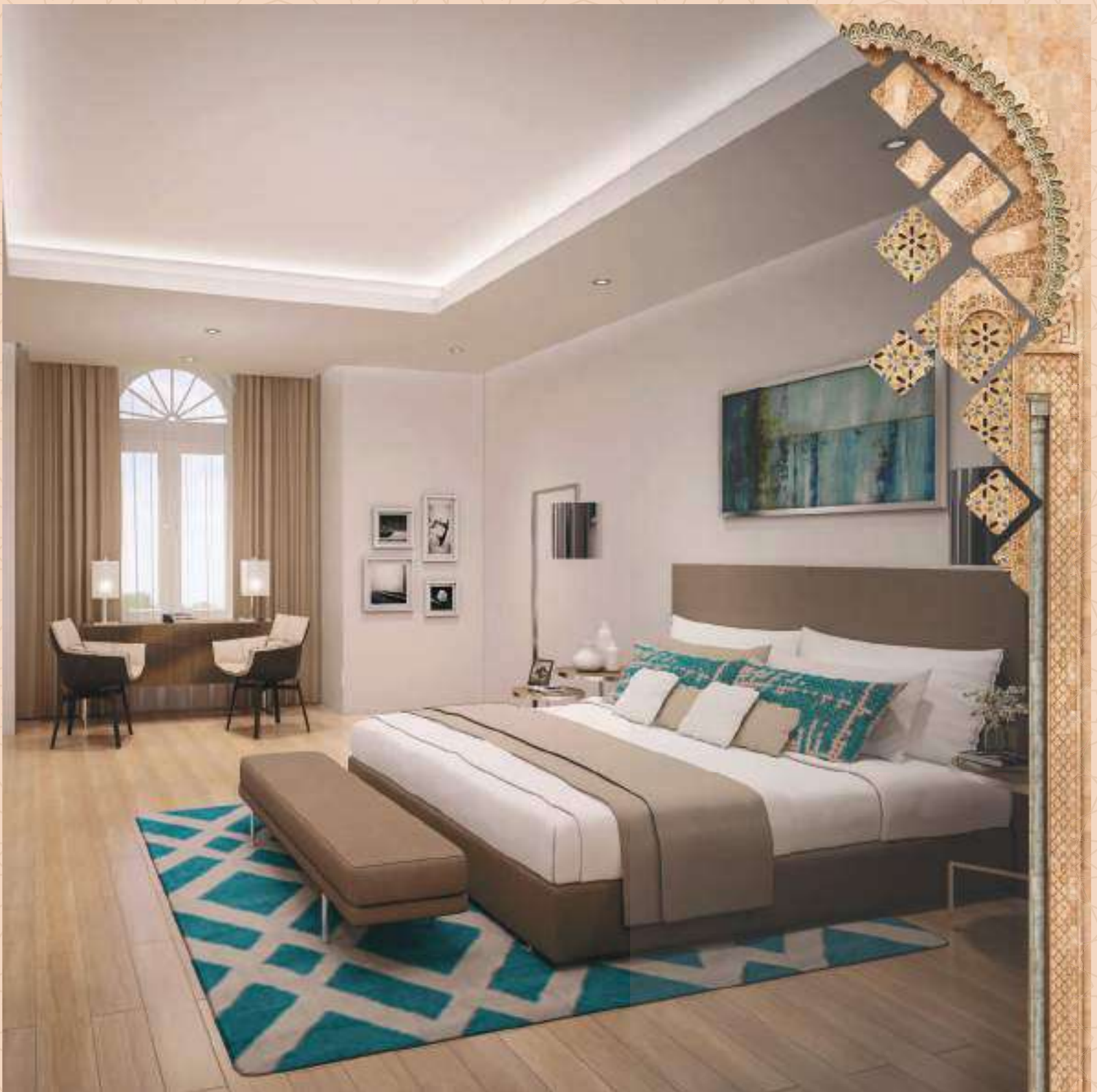




After the brisk pace of the day, you'll welcome the serene comfort of a home that has been designed to maximize living space. The neat, minimalistic, contemporary style, unusual elements like gypsum wall panels in the bedrooms and living areas and a variety of textures and feels, create a serene environment and add to the Andalusian European feel.

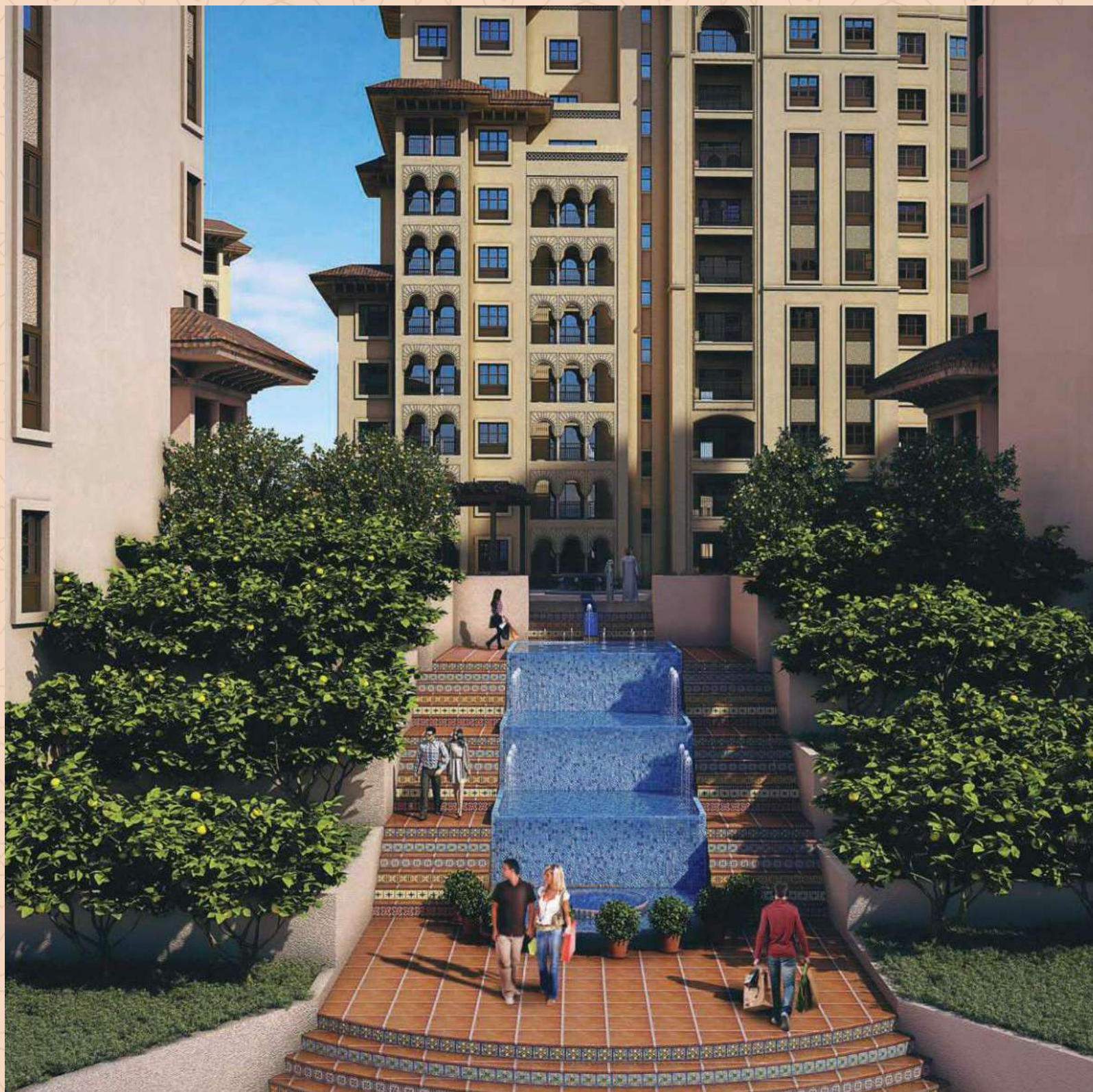
Arched walls and perforated ceilings with Mashrabiya patterns and bold tones of blue, yellow, orange and white in the mosaics and designs of common areas reflect the Arabian culture.













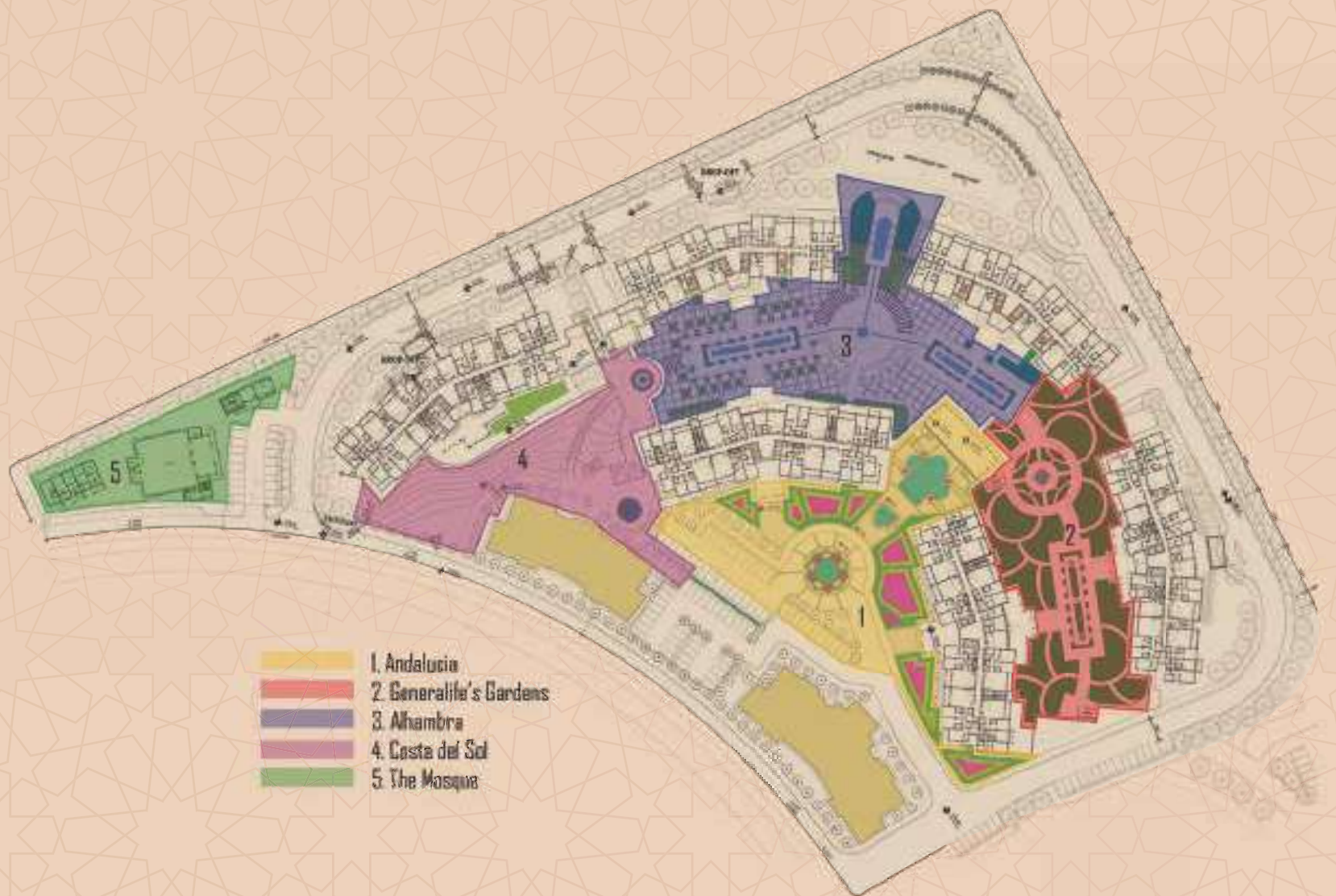
As the day winds down, you'll find plenty of reasons to visit the buzzing commercial centre at the heart of the development: shops, restaurants, a supermarket and a 130 key boutique hotel to accommodate guests.





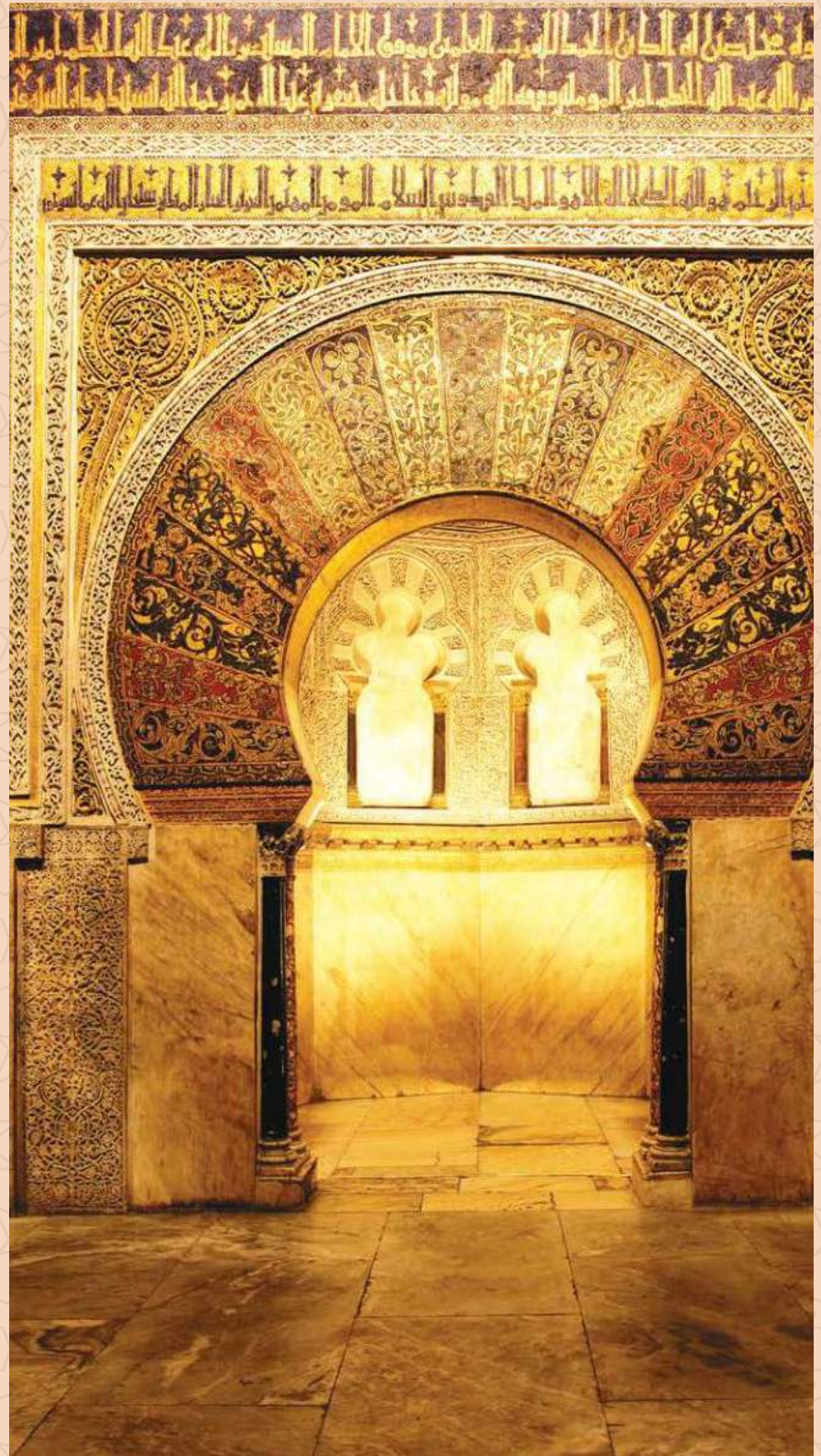


6 HECTARES OF LANDSCAPING ZONES



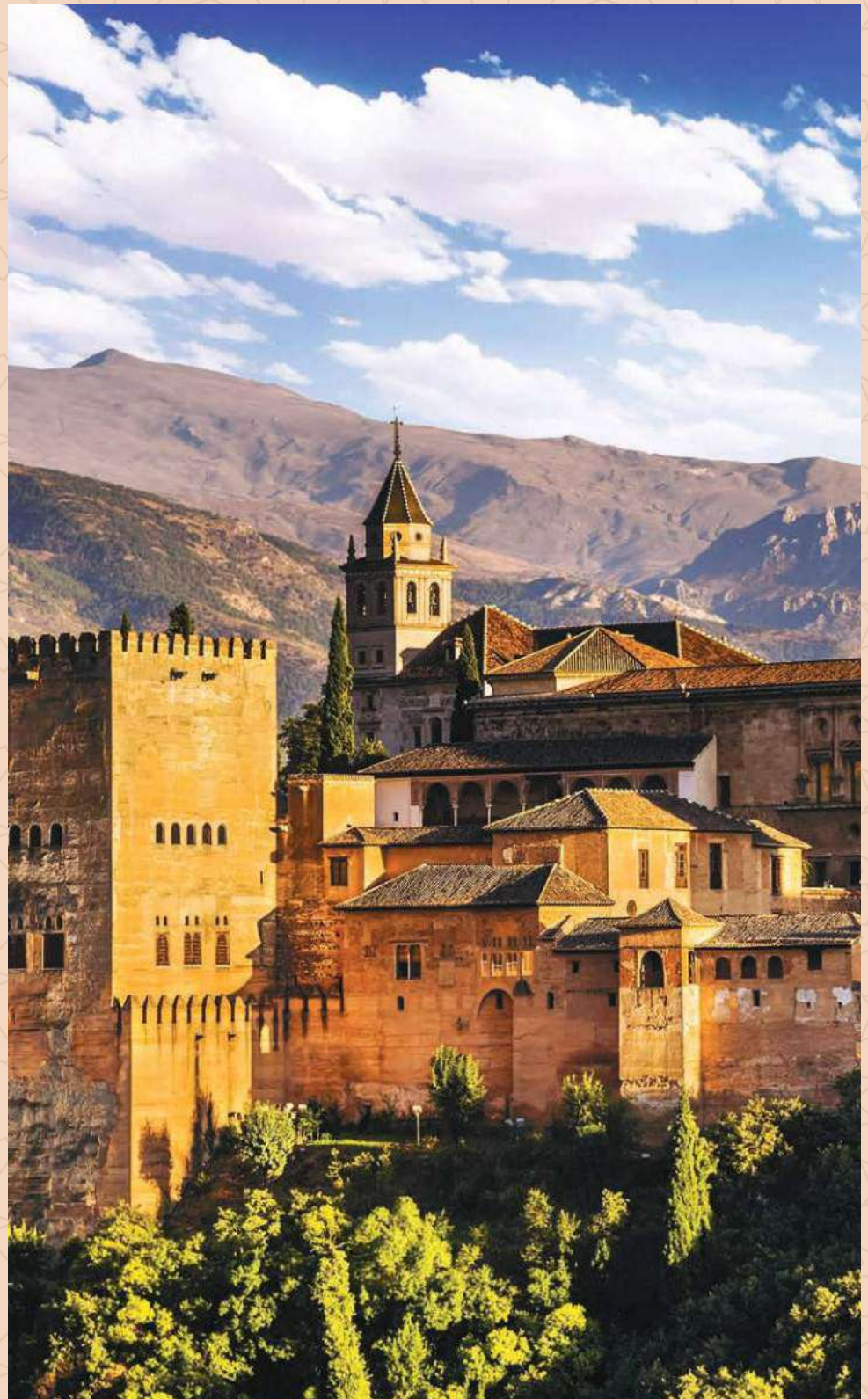
The Mosque

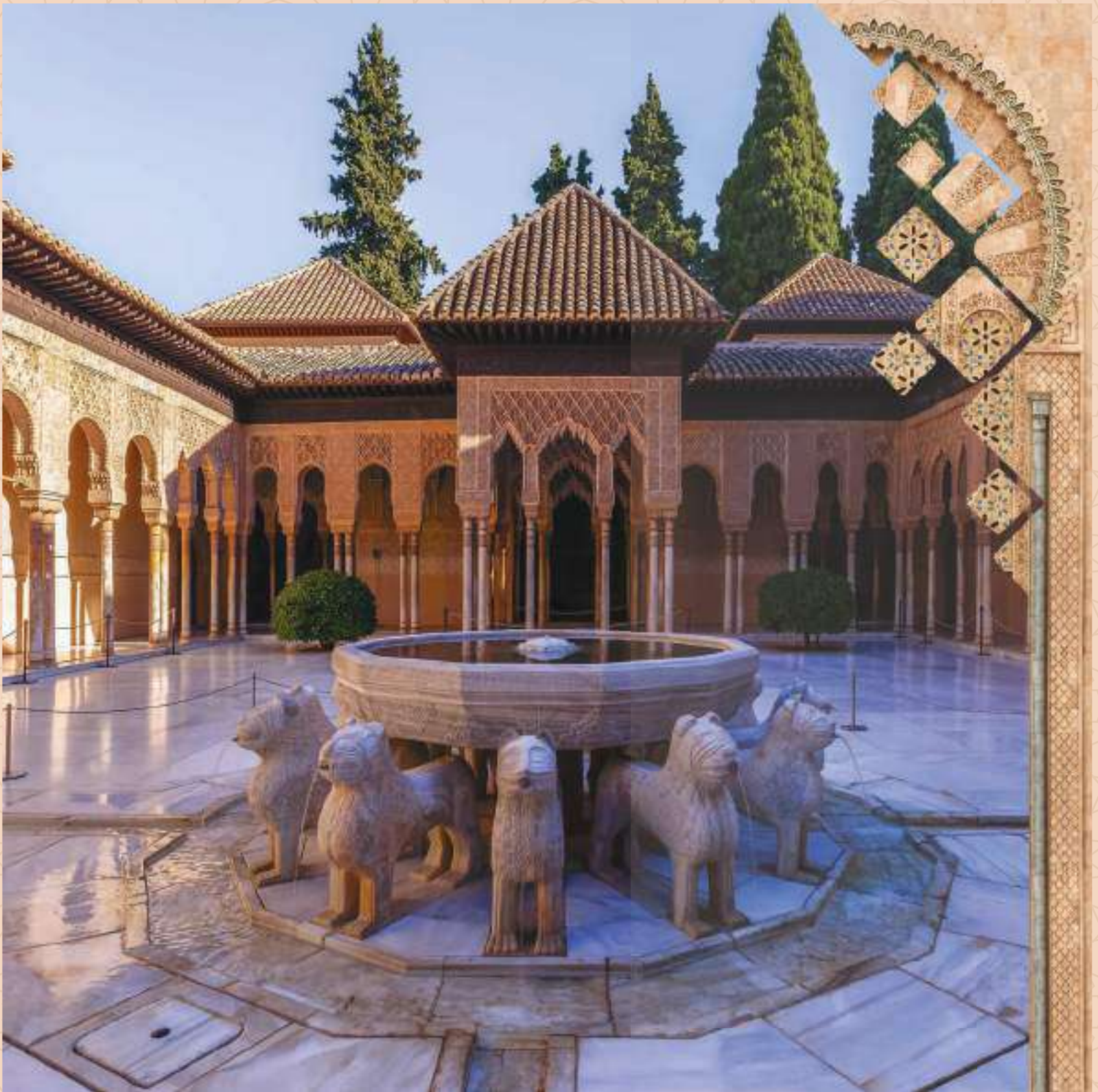
A masterpiece raised from the ground up with columns of jasper, onyx, marble and granite, the Great Mosque of Córdoba is considered one of the most accomplished monuments of Moorish architecture.



Alhambra

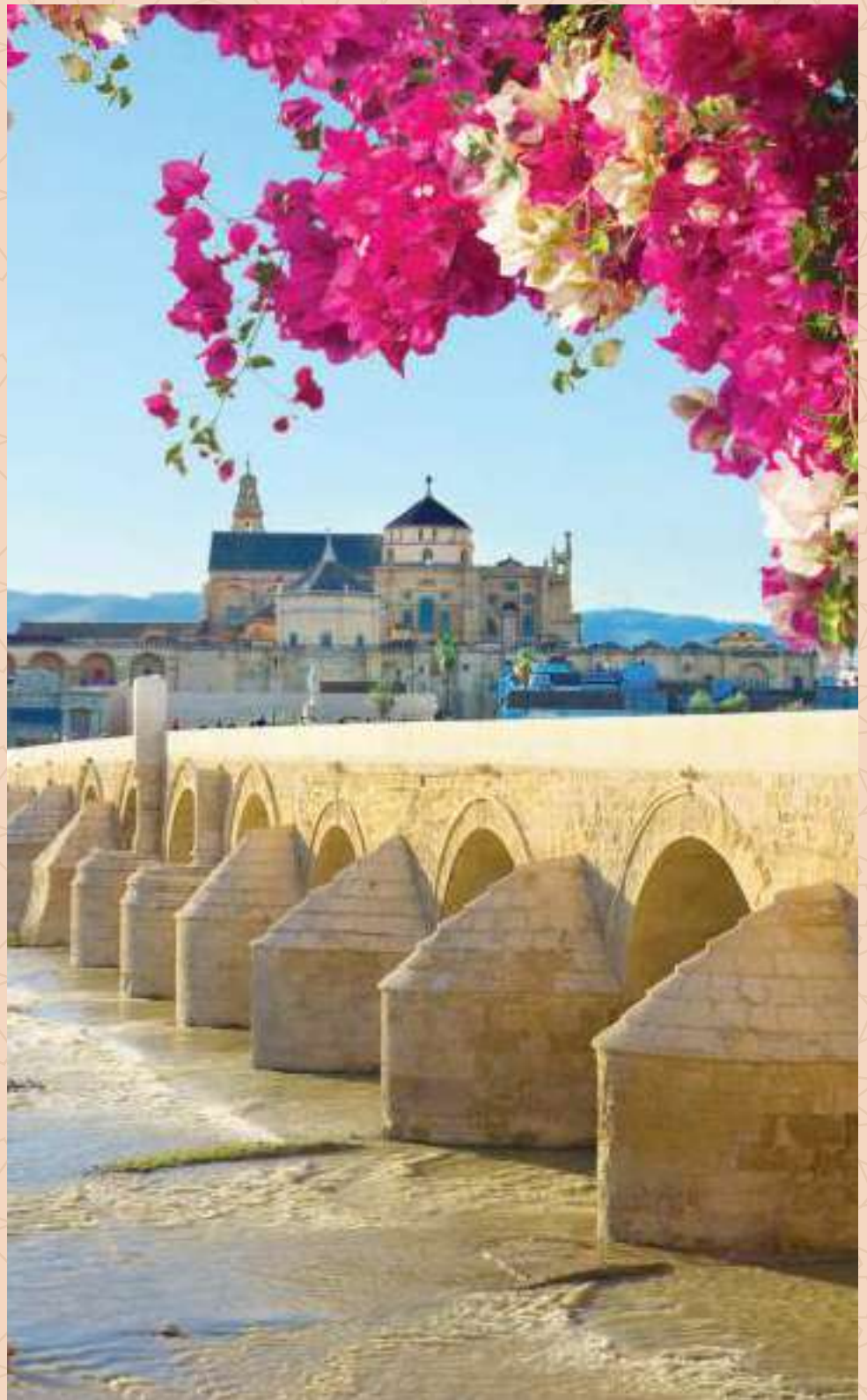
Moorish poets described it as "a pearl set in emeralds". A grand, sprawling hilltop fortress complex encompassing royal palaces with water channels and long pools framed by flowerbeds, colonnades and pavilions. Serene patios and reflecting pools from the Nasrid dynasty, as well as the fountains and orchards of the Generalife gardens.





Andalusia

The name 'Al Andalus' originated during the Moorish rule between the 8th and 15th century when Muslim culture had a strong influence on architecture with landmarks such as Seville's Alcázar Castle, Cordoba's Mezquita and Granada's Alhambra Palace.





Costa del Sol

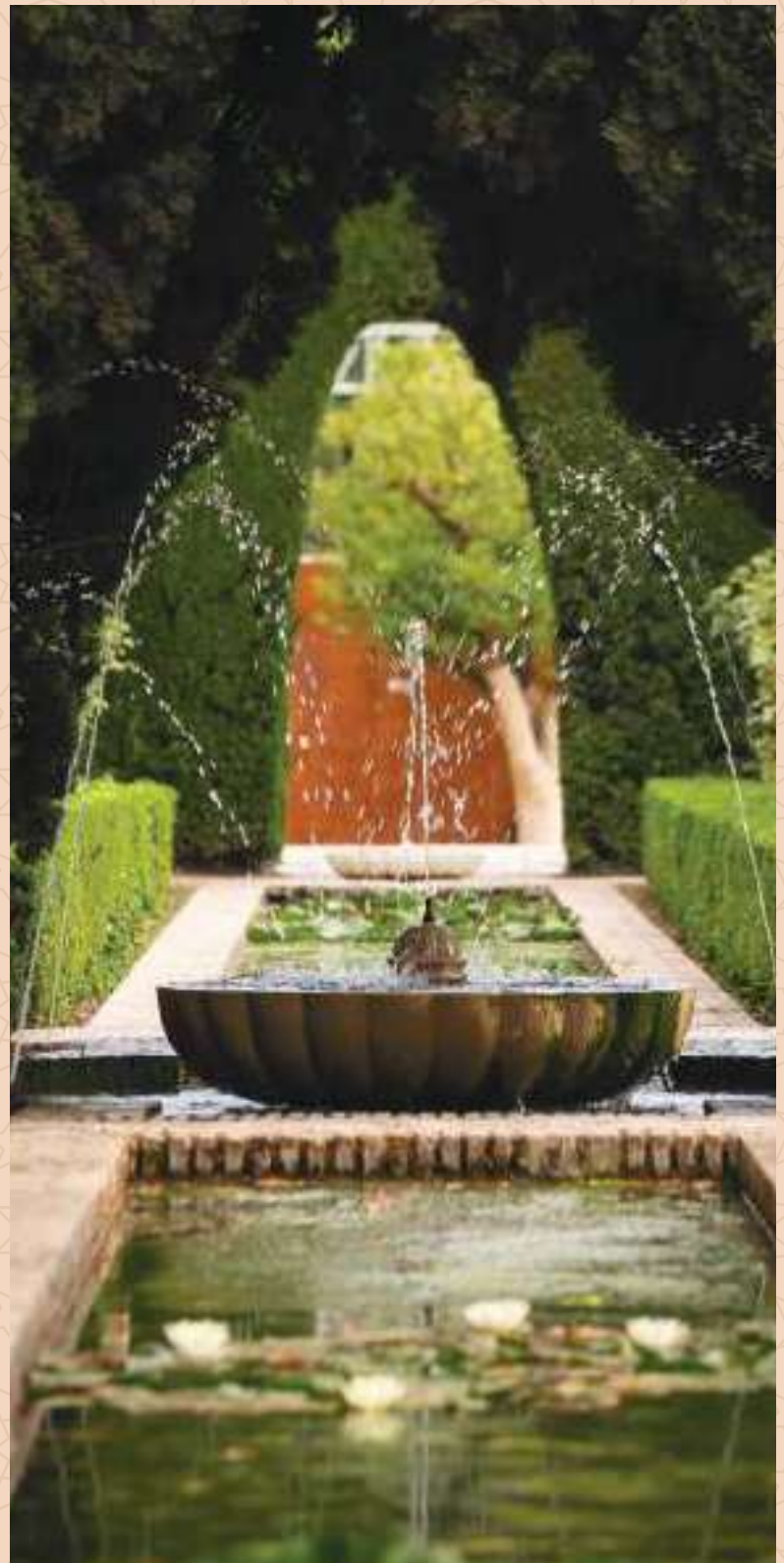
Strategically located as a transit point at sea during the Arab age, Costa Del Sol, or the "Coast of the Sun", played an imperative role in connecting Spanish enclaves to other ports of the Mediterranean Sea.





Generalife's gardens

Built during the reign of Muhammad the third in Al Andalus times, the Jardin de la Sultana, also known as 'Sultana's Garden', served as a summer palace for the Emirate of Granada's Nasrid Emirs.









REDWOOD

ALANDALUS

WHISPERING PINES

FLAME TREE RIDGE

WILD FLOWER

JUNIPER WAY

welcome to AlAndalus





TANAMI
P R O P E R T I E S



+971 4 248 3400



+971 55 162 3236



info@tanamiproperties.ae

www.tanamiproperties.com/Projects/Alandalus