

SKYZ
BY
DANUBE

DANUBE
PROPERTIES



SKYZ

BY

DANUBE

UNIT PLANS

STUDIO

TOTAL AREA RANGE

349.07-362.96 SQ. FT.

Disclaimer: All design, features, amenities, materials, dimensions, layout drawings are approximate, information is subject to change without notice; Actual area of the Unit may vary from the stated area, drawings not to scale; Developer reserves the right to make revisions to comply with any Applicable Law or the requirements of any Relevant Authority;

For actual sizes please refer SPA

STUDIO 1ST FLOOR

Flat Nos.

01, 03, 05, 07, 10, 13, 16, 18



STUDIO 2ND FLOOR

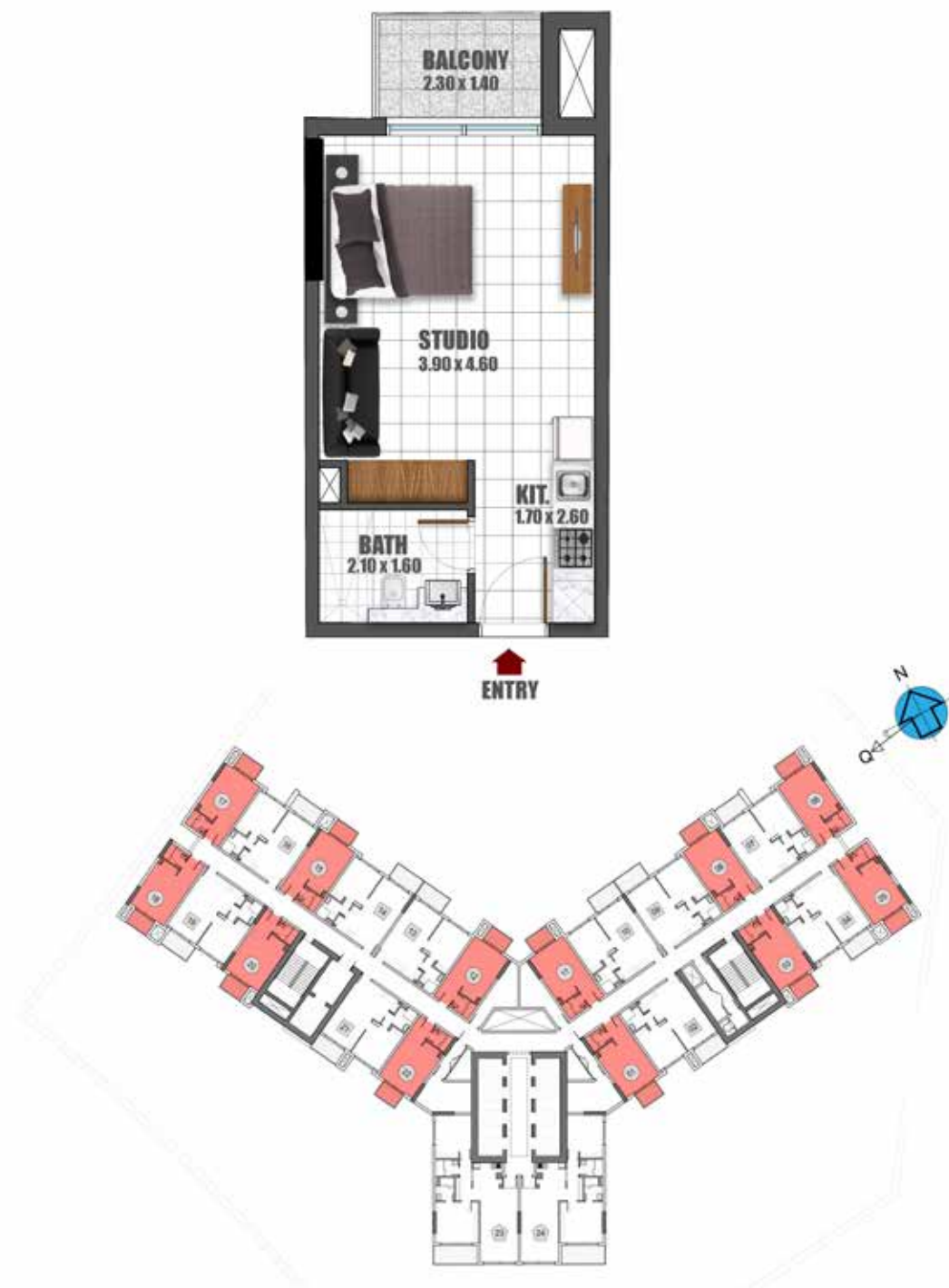
Flat Nos.

01, 03, 06, 09, 10, 13, 16, 18



STUDIO TYPICAL FLOOR

Flat Nos. 01, 03, 05, 06, 08,
11, 12, 15, 17, 18, 20, 22



UNIT PLANS

1 BR

TOTAL AREA RANGE

545.62 - 562.52 SQ. FT.

Disclaimer: All design, features, amenities, materials, dimensions, layout drawings are approximate, information is subject to change without notice; Actual area of the Unit may vary from the stated area, drawings not to scale; Developer reserves the right to make revisions to comply with any Applicable Law or the requirements of any Relevant Authority;

For actual sizes please refer SPA

1 BR 1ST FLOOR

Flat Nos.

02, 04, 06, 08, 09, 11, 12, 14, 15, 17

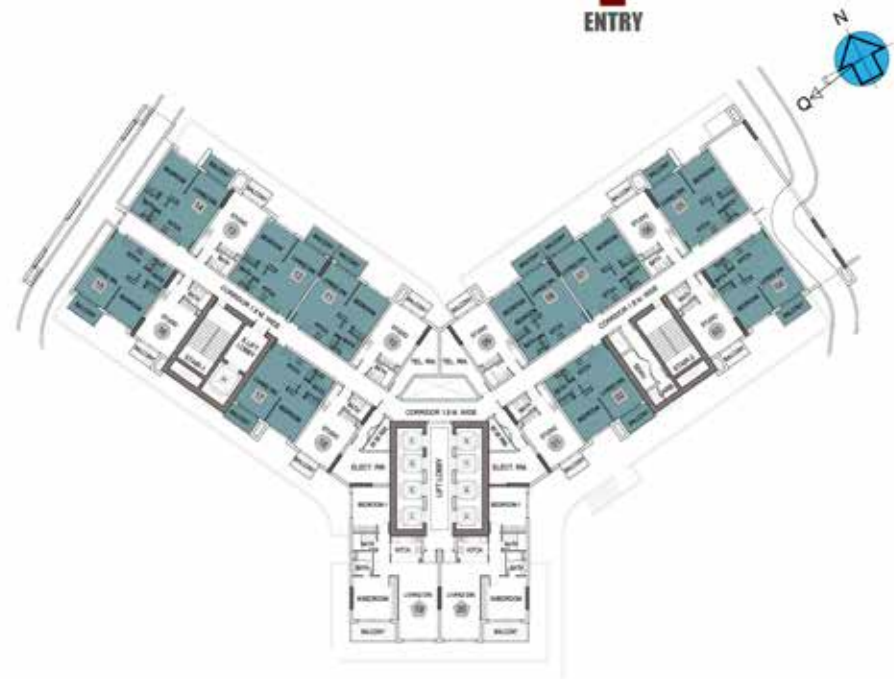


Disclaimer: All design, features, amenities, materials, dimensions, layout drawings are approximate, information is subject to change without notice; Actual area of the Unit may vary from the stated area, drawings not to scale; Developer reserves the right to make revisions to comply with any Applicable Law or the requirements of any Relevant Authority;
For actual sizes please refer SPA

1BR 2ND FLOOR

Flat Nos.

02, 04, 05, 07, 08, 11, 12, 14, 15, 17

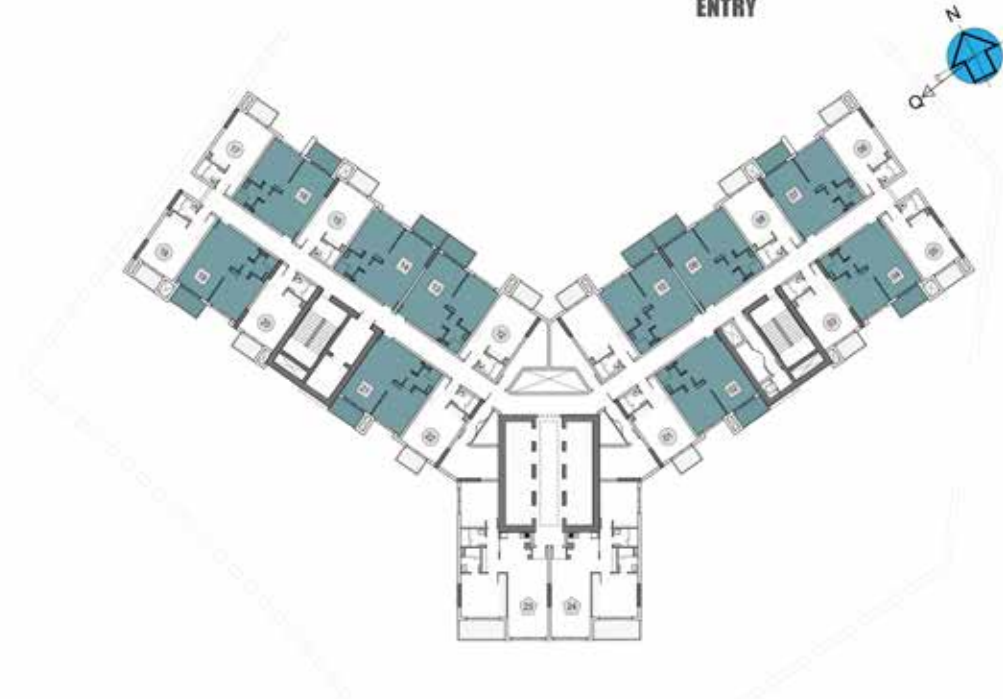


Disclaimer: All design, features, amenities, materials, dimensions, layout drawings are approximate, information is subject to change without notice; Actual area of the Unit may vary from the stated area, drawings not to scale; Developer reserves the right to make revisions to comply with any Applicable Law or the requirements of any Relevant Authority;
For actual sizes please refer SPA

1BR TYPICAL FLOOR

Flat Nos.

02, 04, 07, 09, 10, 13, 14, 16, 19, 21



Disclaimer: All design, features, amenities, materials, dimensions, layout drawings are approximate, information is subject to change without notice; Actual area of the Unit may vary from the stated area, drawings not to scale; Developer reserves the right to make revisions to comply with any Applicable Law or the requirements of any Relevant Authority;
For actual sizes please refer SPA

UNIT PLANS

2 BR

TOTAL AREA

995.88 SQ. FT.

Disclaimer: All design, features, amenities, materials, dimensions, layout drawings are approximate, information is subject to change without notice; Actual area of the Unit may vary from the stated area, drawings not to scale; Developer reserves the right to make revisions to comply with any Applicable Law or the requirements of any Relevant Authority;

For actual sizes please refer SPA

2BR 1ST FLOOR

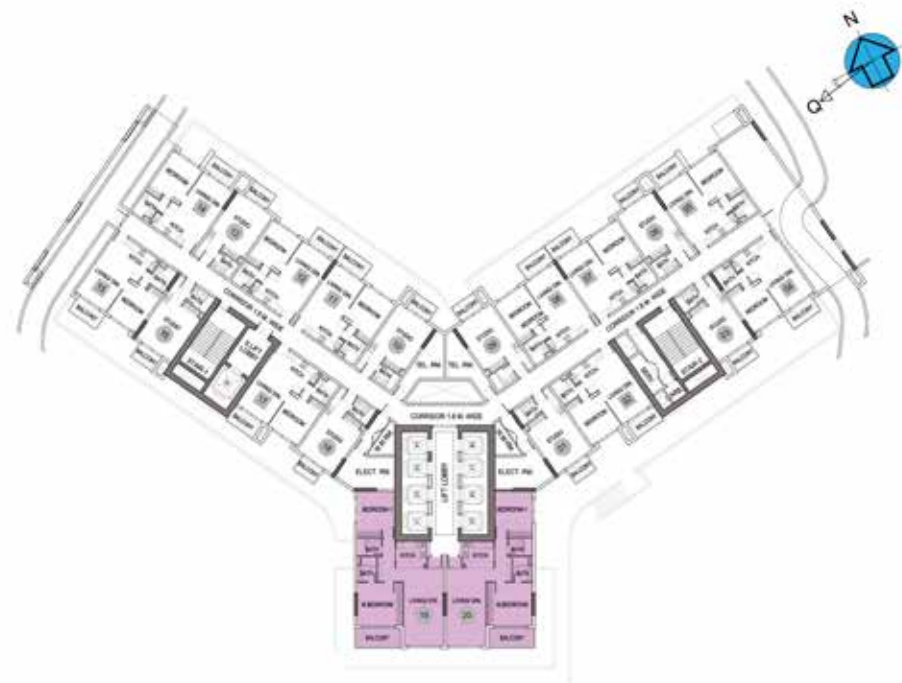
Flat Nos. 19 & 20



Disclaimer: All design, features, amenities, materials, dimensions, layout drawings are approximate, information is subject to change without notice; Actual area of the Unit may vary from the stated area, drawings not to scale; Developer reserves the right to make revisions to comply with any Applicable Law or the requirements of any Relevant Authority;
For actual sizes please refer SPA

2BR 2ND FLOOR

Flat Nos. 19 & 20



Disclaimer: All design, features, amenities, materials, dimensions, layout drawings are approximate, information is subject to change without notice; Actual area of the Unit may vary from the stated area, drawings not to scale; Developer reserves the right to make revisions to comply with any Applicable Law or the requirements of any Relevant Authority;
For actual sizes please refer SPA

2BR TYPICAL FLOOR

Flat Nos. 23 & 24



Disclaimer: All design, features, amenities, materials, dimensions, layout drawings are approximate, information is subject to change without notice; Actual area of the Unit may vary from the stated area, drawings not to scale; Developer reserves the right to make revisions to comply with any Applicable Law or the requirements of any Relevant Authority;
For actual sizes please refer SPA



CONTACT US

 +971 4 248 3400 |  +971 55 162 3236

Email Us

info@tanamiproperties.ae

For More Info...

www.tanamiproperties.com/Projects/Skyz-Residence



ADDRESS

Office 3405, Marina Plaza,
Al Marsa Street, Dubai Marina, UAE